

DANE COUNTY
REGIONAL AIRPORT
MADISON



Noise Abatement Subcommittee

Review of Noise Complaint Activity

October 30, 2012

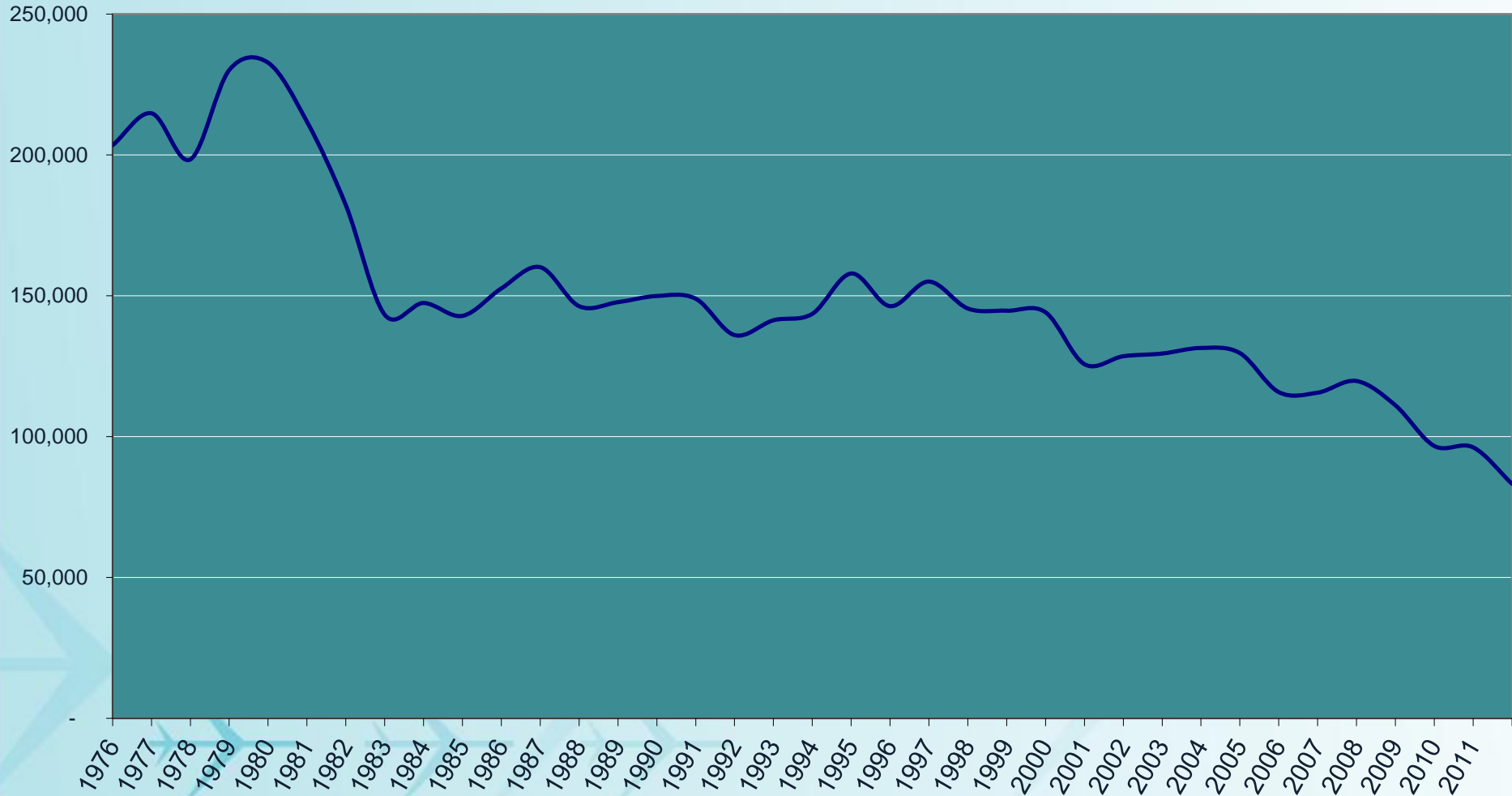
It's all about the journey.

AIRCRAFT MOVEMENTS

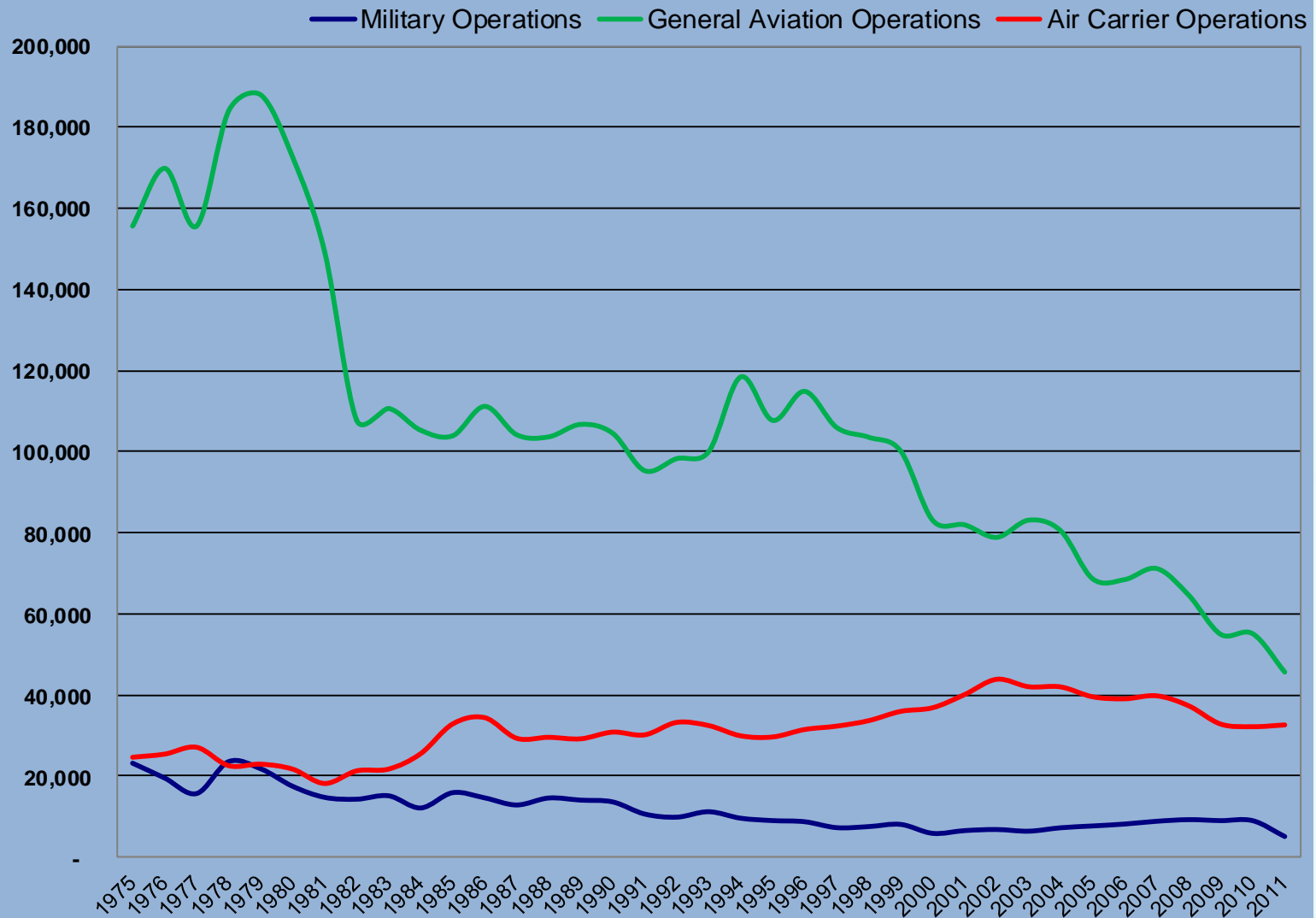
| Aircraft Movements | APR 12– SEP 12 | APR 11– SEP 11 | % Change |
|--------------------------------|-----------------------|-----------------------|-----------------|
| <i>Air Carrier</i> | 16,079 | 16,763 | -4% |
| <i>Military</i> | 3,290 | 2,822 | 17% |
| <i>General Aviation</i> | 25,891 | 24,292 | 6% |
| <i>Total Movements</i> | 45,260 | 43,877 | 3% |

Aircraft Operations

Historical Total Aircraft Operations, DCRA

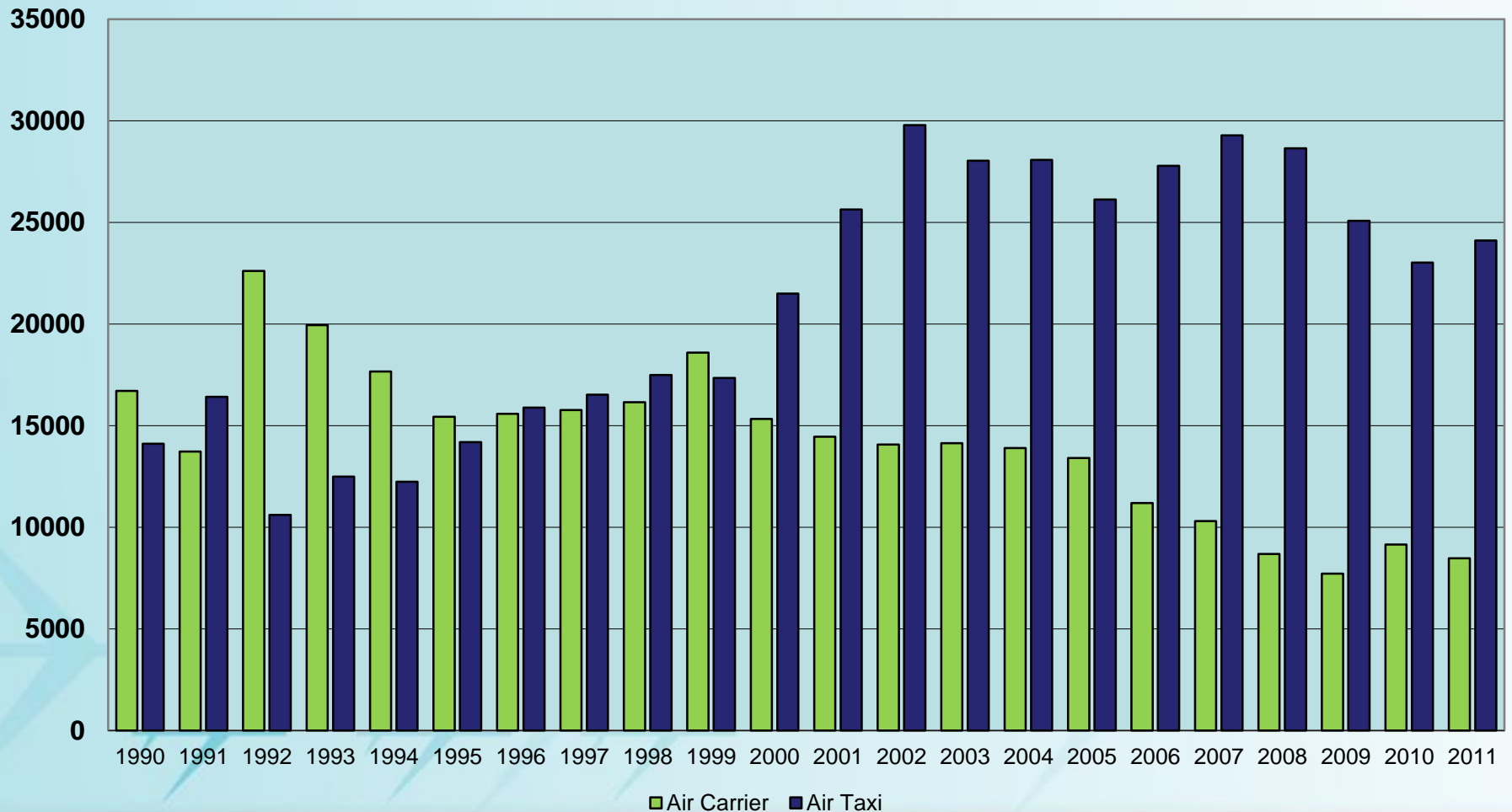


HISTORICAL AIRCRAFT OPERATIONS BY TYPE



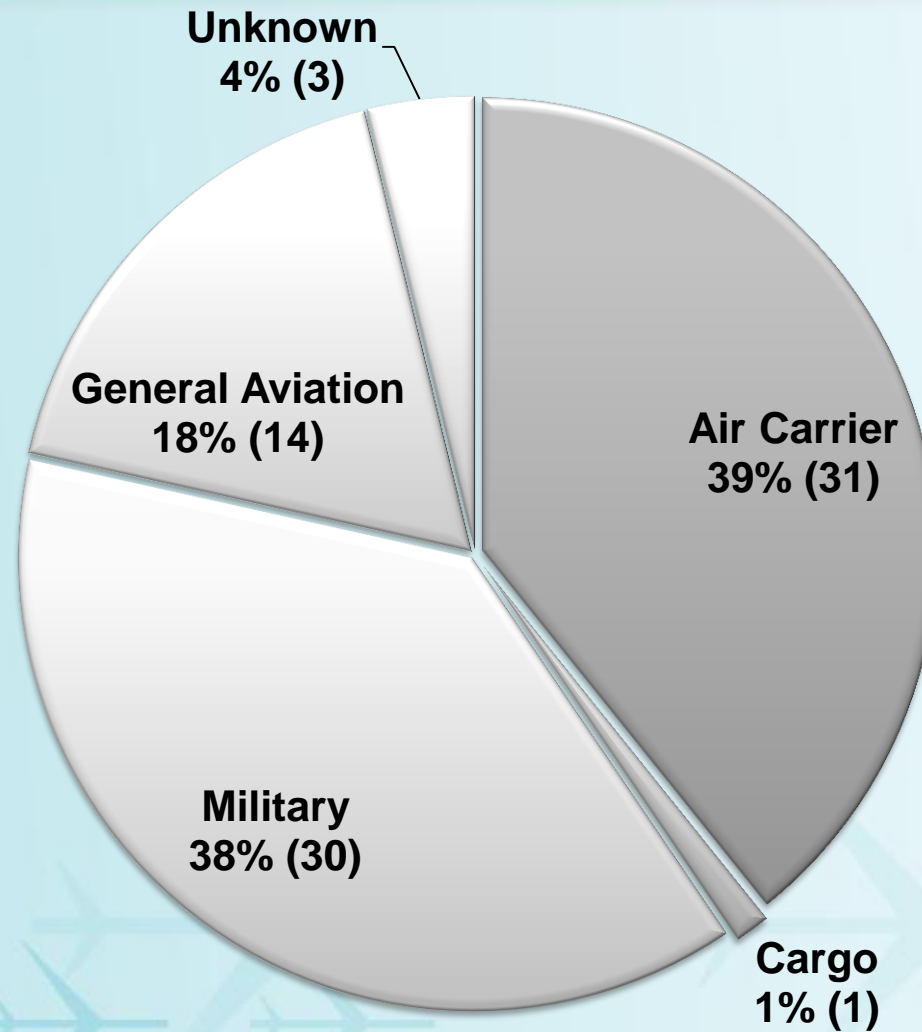
Air Carrier (A-320, MD-80) vs Air Taxi (CRJ, ERJ)

AC aircraft have 60 or more seats
AT aircraft have 59 seats or less

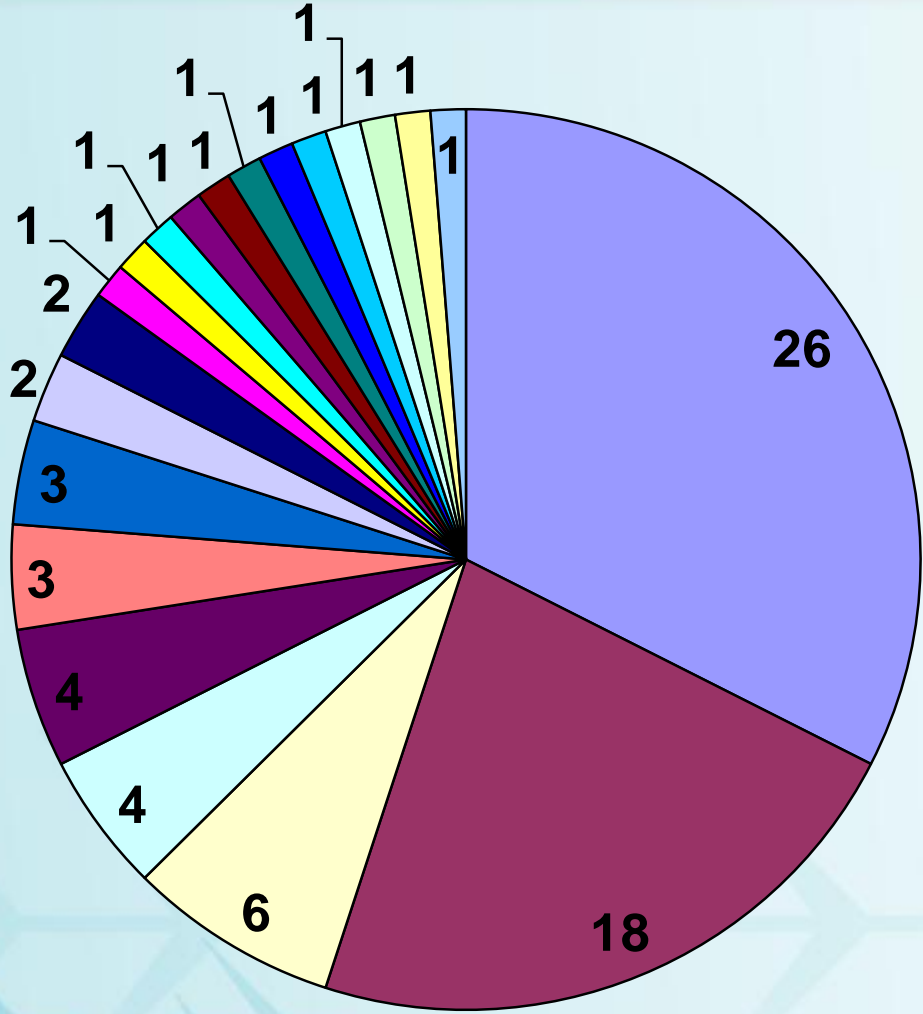


COMPLAINTS BY AIRCRAFT TYPE

APR 12- SEP 12



Complaints per Household

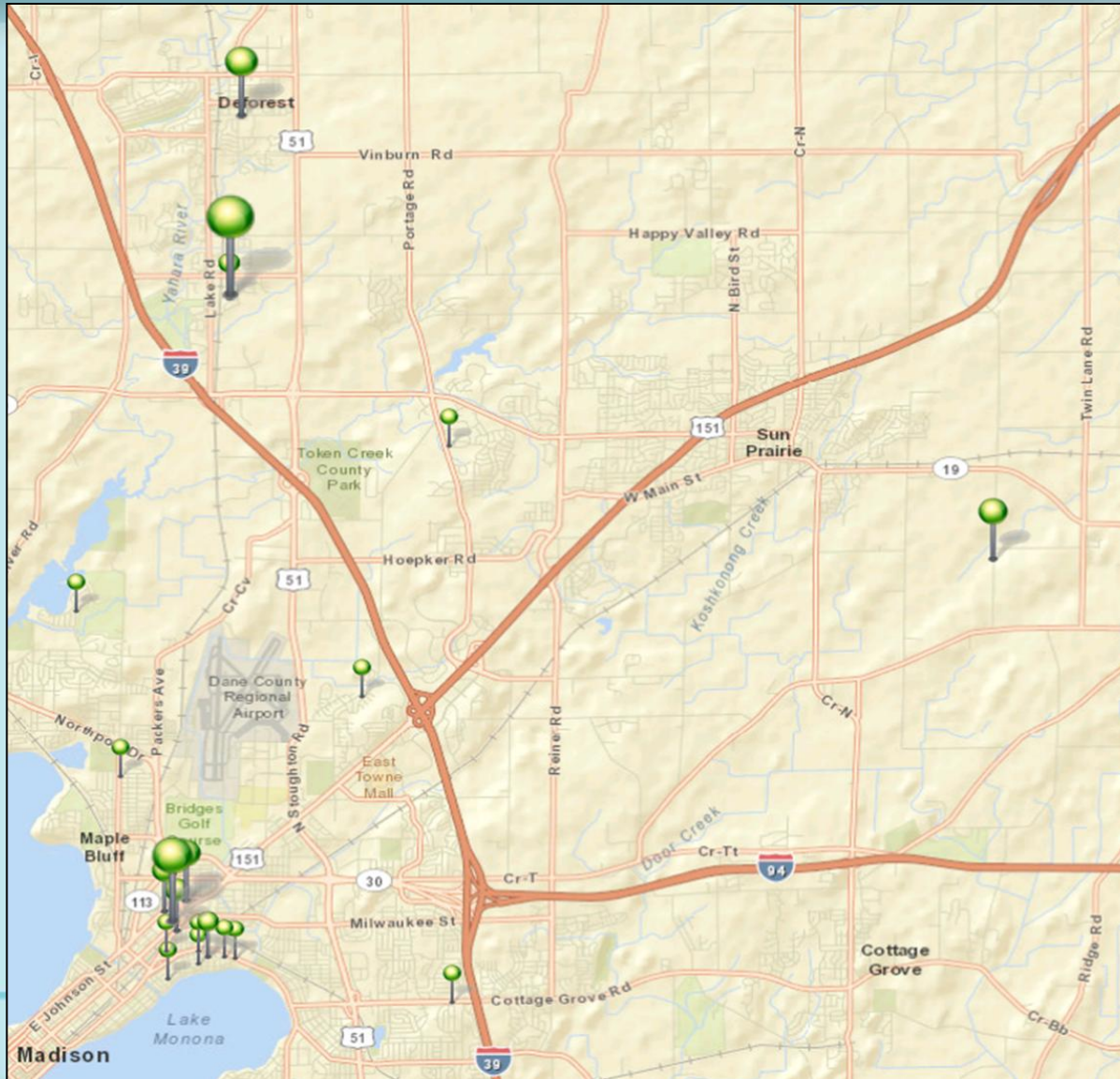


COMPLAINTS BY AREA

| Area | APR 12 – SEP 12 | | APR 11 – SEP 11 | |
|-----------------------|-----------------|-----------|-----------------|-----------|
| | Complaints | Callers | Complaints | Callers |
| <i>Blooming Grove</i> | 0 | 0 | 0 | 0 |
| <i>Burke</i> | 0 | 0 | 0 | 0 |
| <i>Cottage Grove</i> | 0 | 0 | 0 | 0 |
| <i>DeForest</i> | 7 | 2 | 2 | 1 |
| <i>Fitchburg</i> | 0 | 0 | 0 | 0 |
| <i>Marshall</i> | 3 | 1 | 0 | 0 |
| <i>Madison</i> | 41 | 17 | 80 | 31 |
| <i>McFarland</i> | 0 | 0 | 0 | 0 |
| <i>Middleton</i> | 0 | 0 | 0 | 0 |
| <i>Monona</i> | 0 | 0 | 0 | 0 |
| <i>Sun Prairie</i> | 0 | 0 | 0 | 0 |
| <i>Windsor</i> | 29 | 3 | 0 | 0 |
| <i>Verona</i> | 0 | 0 | 0 | 0 |
| <i>Waunakee</i> | 0 | 0 | 0 | 0 |
| Total | 80 | 23 | 82 | 32 |

COMPLAINT LOCATIONS

APR 12 – SEP 12



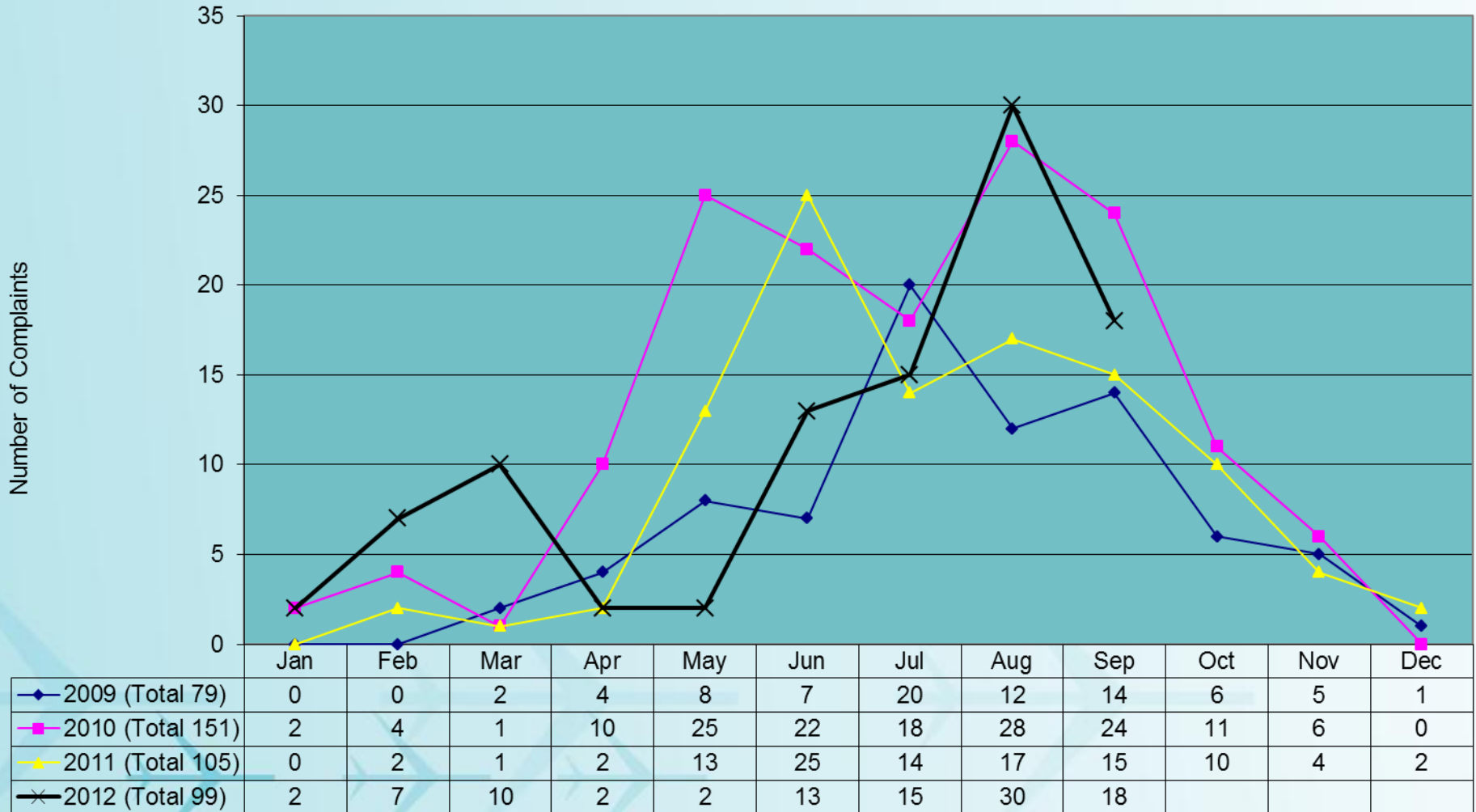
NOISE COMPLAINT CALLS

APR 12 – SEP 12

| | Apr | May | Jun | Jul | Aug | Sep | TOTAL |
|-------|-----|-----|-----|-----|-----|-----|-------|
| DAY | 2 | 2 | 9 | 11 | 28 | 18 | 70 |
| NIGHT | | | 4 | 4 | 2 | | 10 |
| TOTAL | 2 | 2 | 13 | 15 | 30 | 18 | 80 |

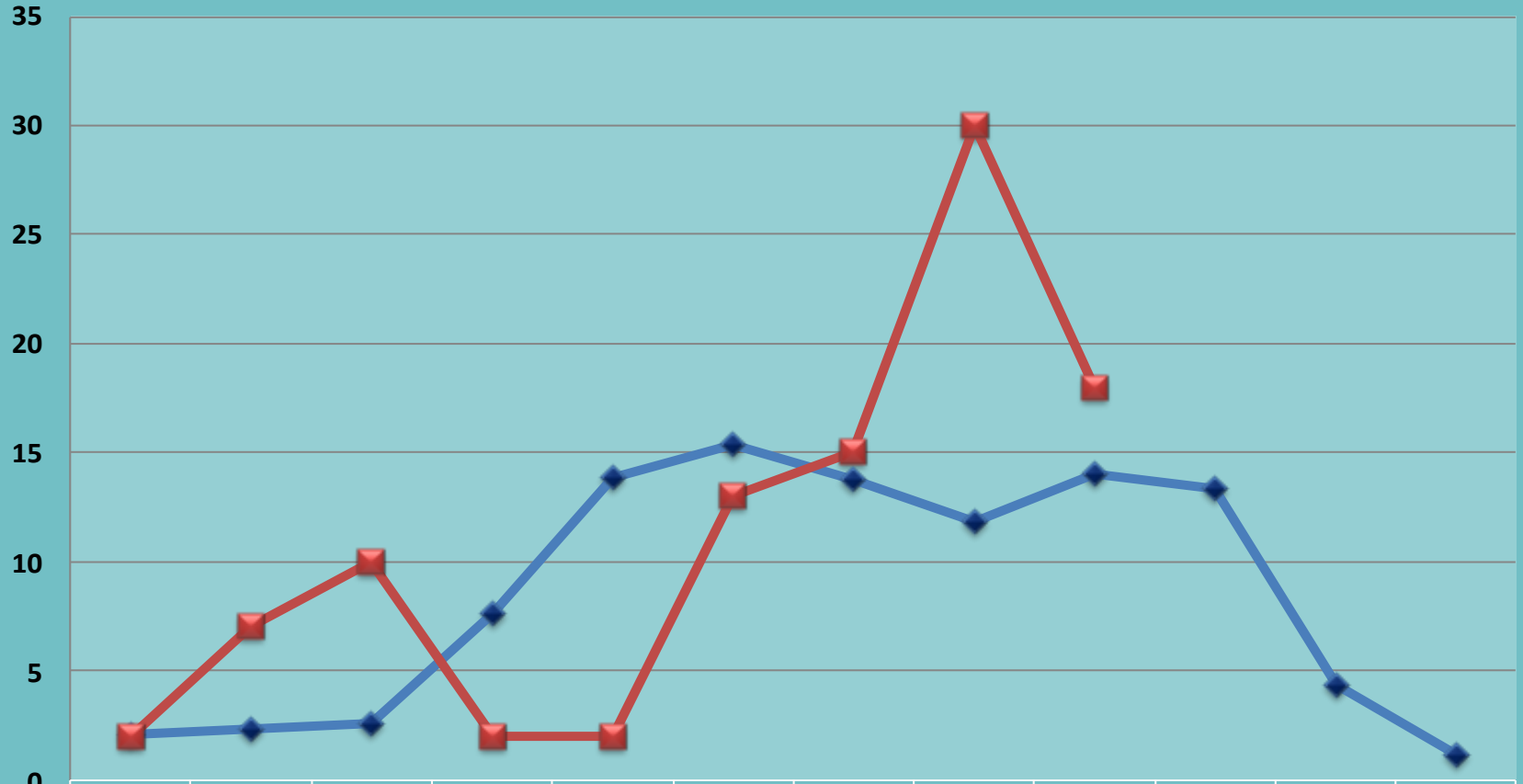
HISTORICAL COMPLAINTS BY MONTH

'09-'12 Monthly Noise Complaints



Noise Complaint History

Average Monthly Noise Complaints '04-'11 Average vs 2012 Complaints



| | Jan | Feb | Mar | Apr | May | Jun | Jul | Aug | Sep | Oct | Nov | Dec |
|----------|------|------|------|------|-------|-------|-------|-------|-----|-------|------|------|
| '04 -'11 | 2.12 | 2.37 | 2.62 | 7.62 | 13.87 | 15.37 | 13.75 | 11.87 | 14 | 13.37 | 4.37 | 1.12 |
| 2012 | 2 | 7 | 10 | 2 | 2 | 13 | 15 | 30 | 18 | | | |

COMPLAINT HISTORY

APR 12 – SEP 12

| | 1 | 2 | 3 | 4 | 5 | 6 | 7 | 8 | 9 | 10 | 11 | 12 | 13 | 14 | 15 | 16 | 17 | 18 | 19 | 20 | 21 | 22 | 23 | 24 | 25 | 26 | 27 | 28 | 29 | 30 | 31 | | |
|-----|----------------------|----|-----|----|---|---|---|-----------|---|----|----|----------------------------|-------------------------------------|----|----|----|----|----|-------------------|----------|----|----|----|----|----|----|----|----|----|----|----------------|--|--|
| APR | | A | | | | | | | A | | | | | | | | | | | | | | | | | | | | | | | | |
| MAY | | | | | | | | | | | | | | | | | | C | A | | | | | | | | | | | | | | |
| JUN | M | | MM | | | | | | | | | | MAA AAAA AAAA AAAA AAAA | A | M | | | | | | | | | | | | | | | | | | |
| JUL | | | A | | A | | | | | | | | | | | | U | A | | | AA | | | | M | | | | A | G | MM GG MU | | |
| AUG | GM GM MM MM | | | | | | | MMM MM | | M | G | MA MA GA GA GA | | | U | M | GG | | | MG GA | A | | | | | A | | | A | | | | |
| SEP | M | MG | AGA | AA | | | | | | | | | | | A | G | A | G | MMM MMM MMM | | | | | | | | | A | | | | | |

A = Airline (31)

C = Cargo (1)

U = Unknown (3)

M = Military Fixed Wing (30)

G = General Aviation (14)

Wisconsin Wind Data*

*National Weather Service

| Month | Prevailing Wind | Greater than 5 kts |
|--------|-----------------|--------------------|
| Jan | WNW – 11.5 | 94.0% |
| Feb | WNW – 12 | 93.4% |
| Mar | NW – 13 | 93.9% |
| Apr | S – 11.4 | 93.6% |
| May | S – 10.4 | 93.0% |
| Jun | S – 9.7 | 91.6% |
| Jul | S – 9.2 | 90.1% |
| Aug | S – 9.1 | 88.9% |
| Sep | S – 9.8 | 90.1% |
| Oct | S – 10.4 | 92.2% |
| Nov | S – 10.7 | 94.3% |
| Dec | WNW – 12.4 | 94.0% |
| Annual | S – 12.4 | 92.4% |

NOISE ABATEMENT COMPLIANCE AUDIT

APR 12– SEP 12

| WEATHER / RUNWAY DATA | |
|---|---|
| WINDS AT 5 KNOTS OR HIGHER ¹ | 76.46% |
| VISIBILITY AT 5 STATUTE MILES OR LESS | 2.44% |
| RUNWAYS CLOSED ² | 18/36 = 104:47 3/21 = 82:08 14/32 = 82:49 |

¹ – Based on METAR weather observations at the time of recorded aircraft operations.

² – Runway closures primarily due to runway maintenance.

RUNWAY USE

| | |
|---|--------|
| Aircraft observed departing to the North | 40.16% |
| Aircraft observed arriving from the North | 55.83% |
| Aircraft observed departing to the South | 59.87% |
| Aircraft observed arriving from the South | 44.17% |

PASSUR FLIGHT TRACKING

16,310 operations recorded by Passur flight monitoring system

2,399 Passur observations of departures to the north and arrivals from the north when conditions allow for implementation of Noise Abatement Procedures

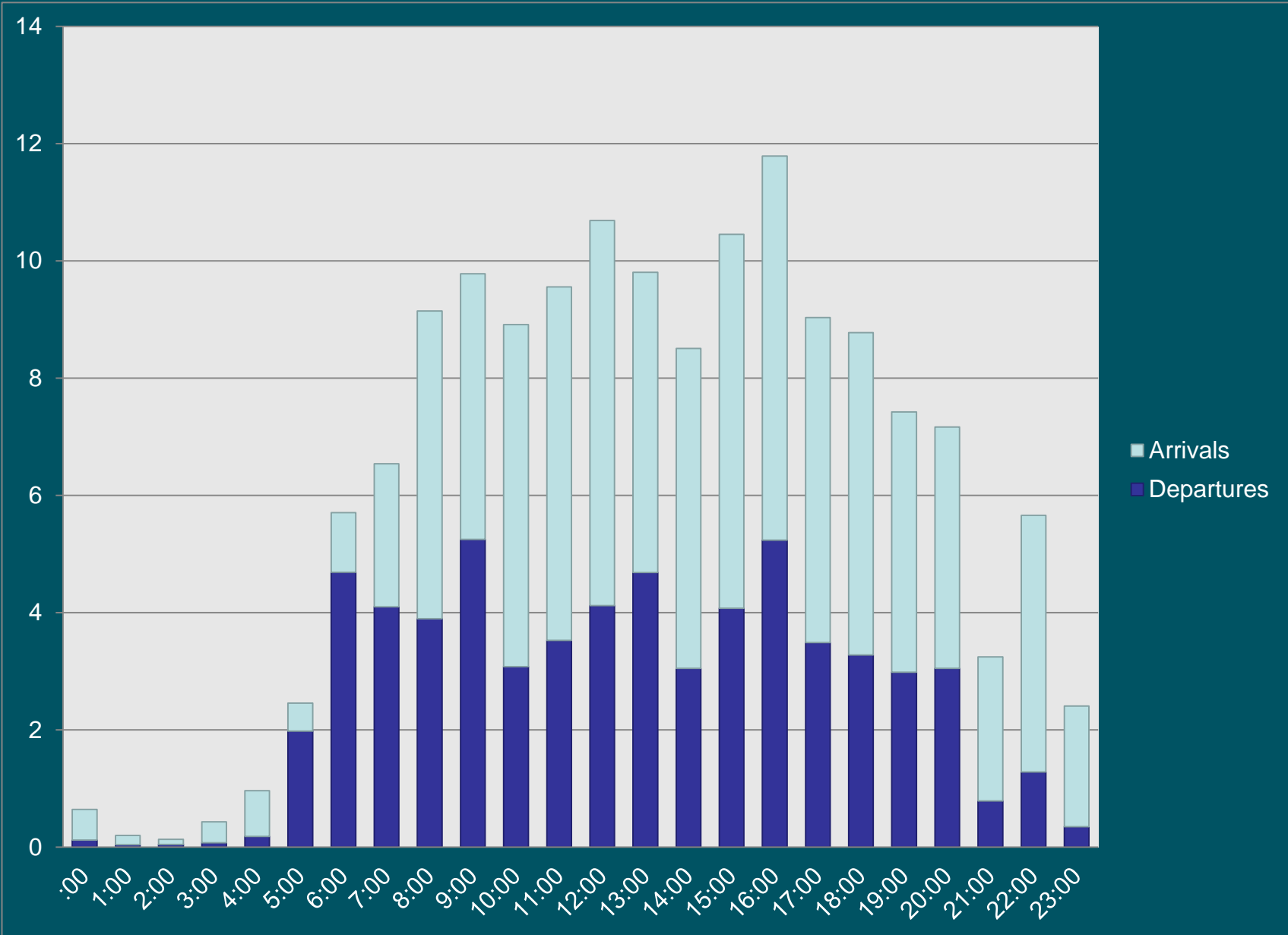
**** With 100% compliance of Noise Abatement Procedures, there are times aircraft are required depart to the south and arrive from the south. ****

| RUNWAY USE FACTORS | | | |
|--------------------|--------|------------|---------|
| | Wind | Visibility | Ceiling |
| South Departure | 67.47% | 2.10% | 16.97% |
| South Arrival | 58.54% | 2.34% | 9.79% |

**** Safety, traffic, airline requirements, and weather are all components which are factored into a pilot's decision when landing and taking off. ****

PASSUR AVERAGE HOURLY OPERATIONS

APR 12 – SEP 12



CONTACT INFORMATION

24 Hour Aircraft Noise Line: **246-5841**

Online Form: <http://www.msnaairport.com/community/noise.aspx>

Madison Automated Weather: **249-0615**



Questions?

