

*Dane County Regional Airport*

*Noise Abatement  
Subcommittee*

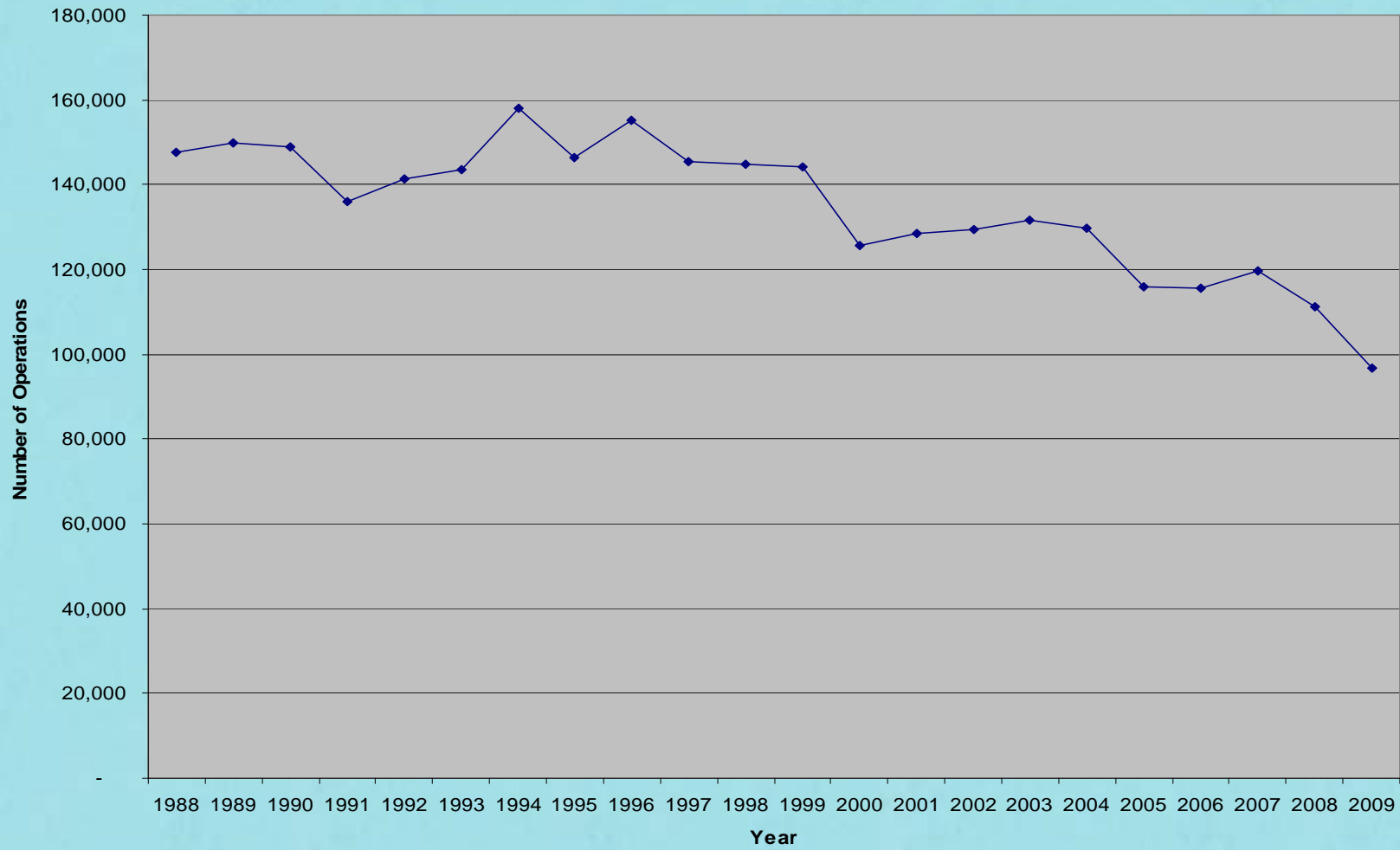
April 20, 2010

Madison, Wisconsin



# Historical Aircraft Movements

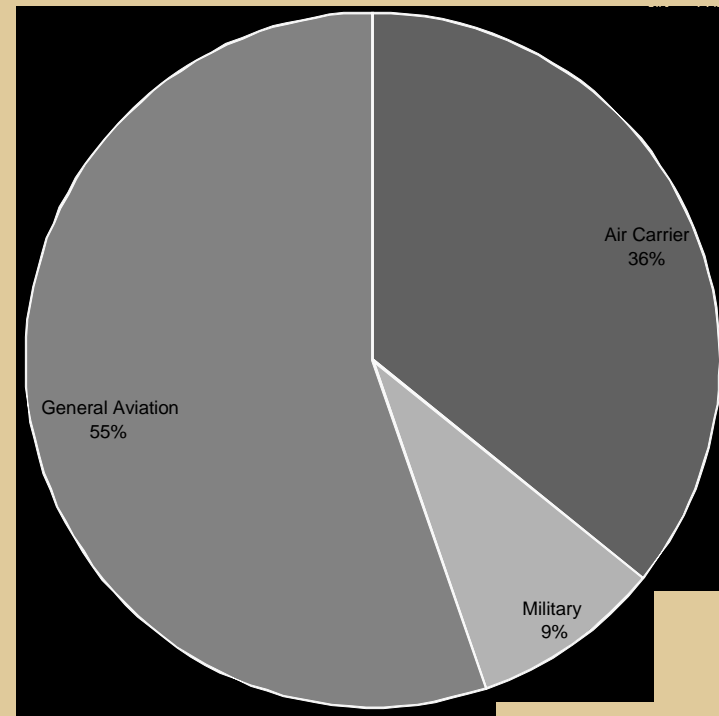
### Historical Aircraft Operations



# Aircraft Movements

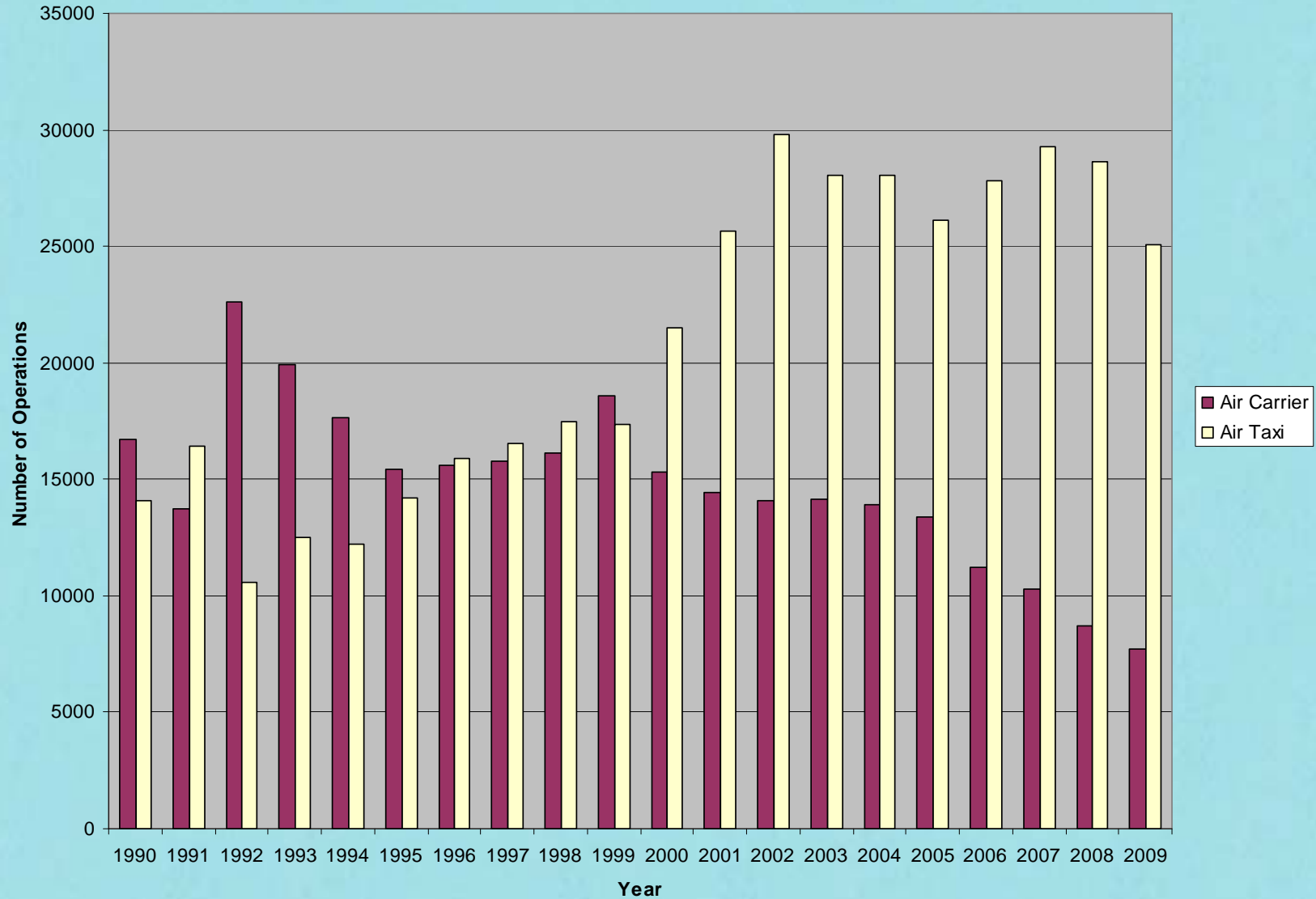
OCT 09 – MAR 10

Aircraft Movements	OCT 09 – MAR 10	OCT 08 – MAR 09	Change
<i>Air Carrier</i>	16,156	16,987	-0.9%
<i>Military</i>	4,037	4,541	-0.8%
<i>General Aviation</i>	24,967	23,850	1.0%
<b>Total Movements</b>	<b>45,160</b>	<b>45,378</b>	<b>-0.9%</b>



# Historical Air Carrier Operations and Air Taxi Operations

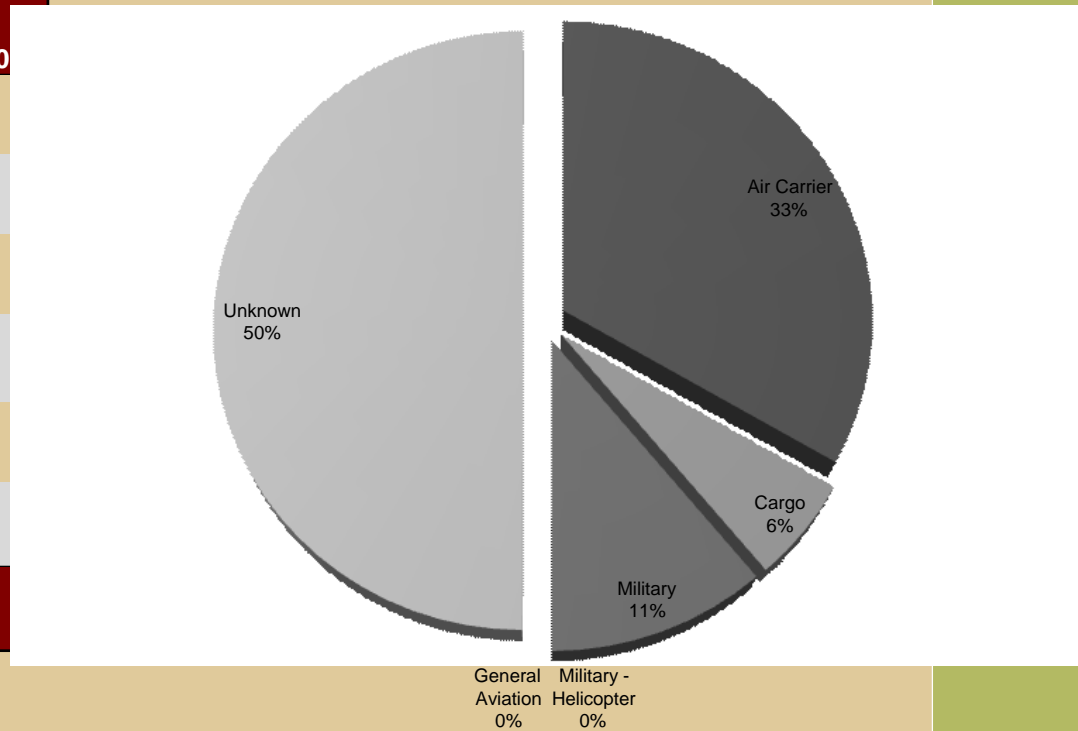
### DCRA Historical Operations



# Complaints By Aircraft Type

OCT 09 – MAR 10

Aircraft Type	OCT 09 - MAR 10	OCT 08 - MAR 09
<i>Air Carrier</i>	6	5
<i>Cargo</i>	1	0
<i>Military</i>	2	6
<i>Military - Helicopter</i>	0	1
<i>General Aviation</i>	0	0
<i>Unknown</i>	9	4
<b>Total</b>	<b>18</b>	<b>16</b>



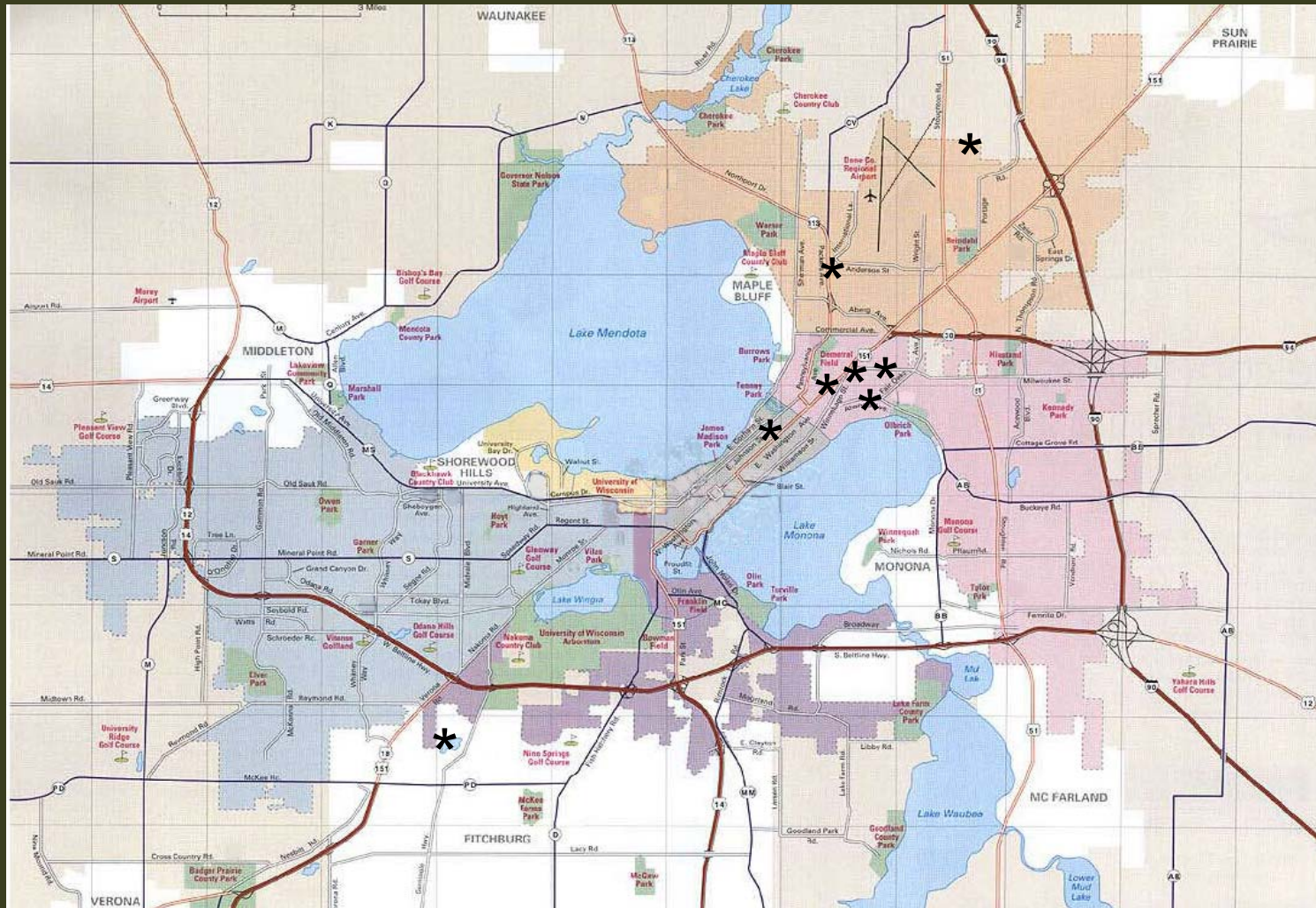
# Complaints by Area

Area	OCT 09 - MAR 10		OCT 08 - MAR 09	
	Complaints	Callers	Complaints	Callers
<i>Blooming Grove</i>	0	0	0	0
<i>Burke</i>	0	0	0	0
<i>Cottage Grove</i>	0	0	0	0
<i>DeForest</i>	0	0	0	0
<i>Fitchburg</i>	1	1	0	0
<i>Madison</i>	17	7	10	5
<i>McFarland</i>	0	0	0	0
<i>Middleton</i>	0	0	0	0
<i>Monona</i>	0	0	0	0
<i>Stoughton</i>	0	0	0	0
<i>Windsor</i>	0	0	1	1
<i>Verona</i>	0	0	0	0
<i>Waunakee</i>	0	0	1	1
<b>Total</b>	<b>18</b>	<b>8</b>	<b>12</b>	<b>7</b>

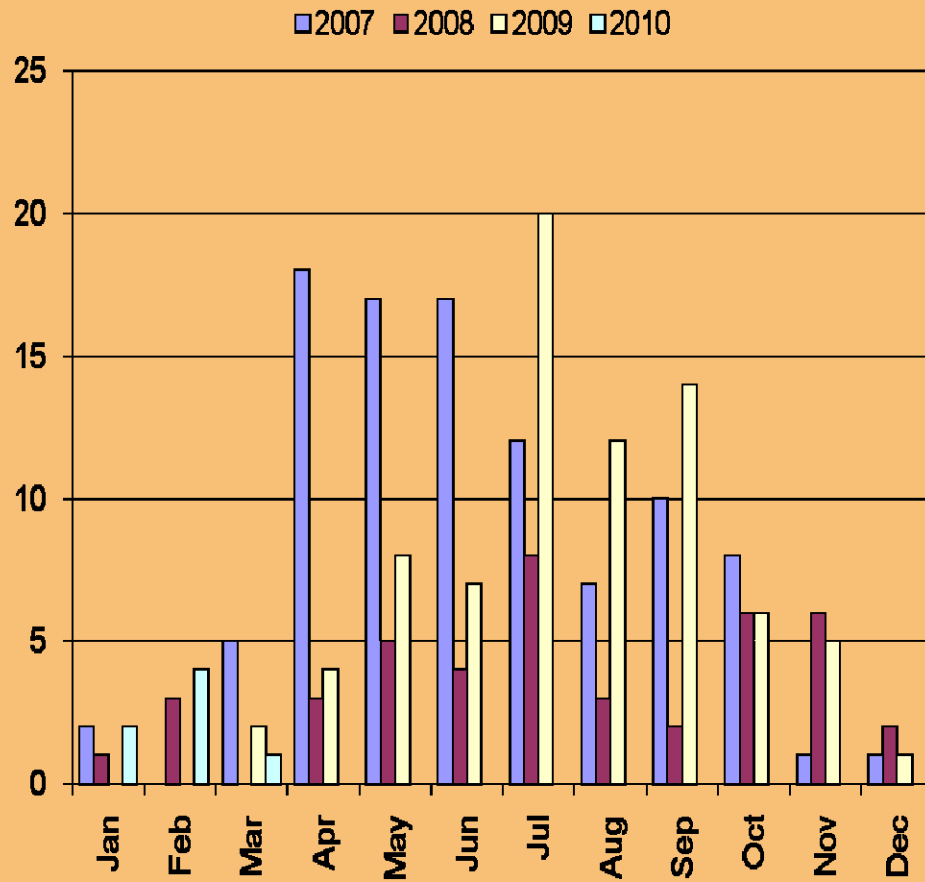


# Complaint Locations

OCT 09 – MAR 10



# Complaints by Month



Date	2007	2008	2009	2010
Jan	2	1	0	2
Feb	0	3	0	3
Mar	5	0	2	1
Apr	18	3	4	0
May	17	5	8	0
Jun	17	4	7	0
Jul	12	8	20	0
Aug	7	3	12	0
Sep	10	2	14	0
Oct	8	6	6	0
Nov	1	6	5	0
Dec	1	2	1	0
<b>Total</b>	<b>98</b>	<b>43</b>	<b>79</b>	<b>6</b>





# Noise Complaint Calls

Daytime vs. Nighttime

	OCT	NOV	DEC	JAN	FEB	MAR	TOTAL
DAY (0700 – 2159)	6	3	0	2	3	1	15
NIGHT (2200 – 0659)	0	2	1	0	0	0	3
TOTAL	6	5	1	2	4	1	18



# Repeat Callers

10

OCT 09 – MAR10

Area	Number of Calls
Madison (7 callers)	17



# Complaint History

## OCT 09 - MAR 10 Noise Complaints

### Days of the Month

	1	2	3	4	5	6	7	8	9	10	11	12	13	14	15	16	17	18	19	20	21	22	23	24	25	26	27	28	29	30	31	
<b>October</b>		A																UN	UN						UN A		A					
<b>November</b>	A				UN		MI		A			UN																		X	X	X
<b>December</b>																											A					
<b>January</b>															UN UN																	
<b>February</b>								UN																	MI		C		X	X	X	
																												X	X	X		
<b>March</b>																				UN												

A = Airline  
 C = Cargo  
 MI = Military Fixed Wing  
 MH = Military Helicopter  
 GA = General Aviation  
 UN = Unknown

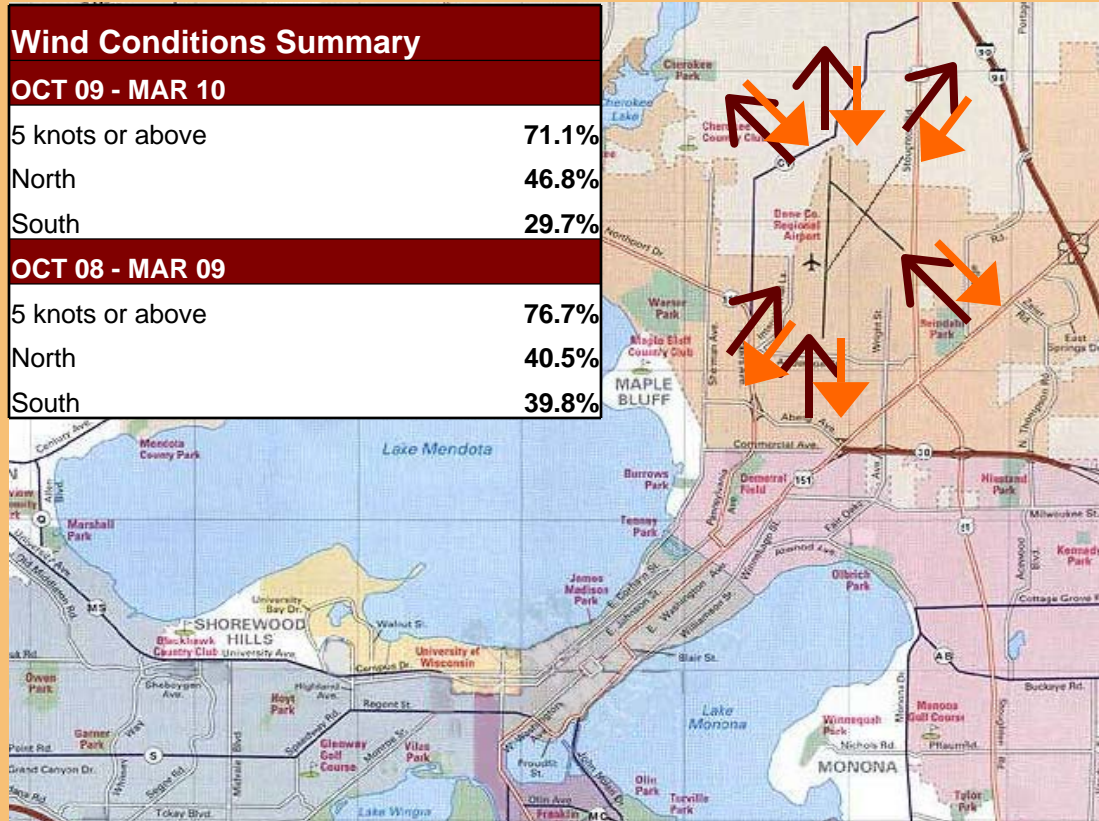
- 18 complaints listed



# Wind Conditions Summary

OCT 09 – MAR 10

Wind Conditions Summary	
OCT 09 - MAR 10	
5 knots or above	71.1%
North	46.8%
South	29.7%
OCT 08 - MAR 09	
5 knots or above	76.7%
North	40.5%
South	39.8%



Direction of aircraft with winds from the north.



Direction of aircraft with winds from the south.



# Proactive Measures

13

## Charter Flight Notification

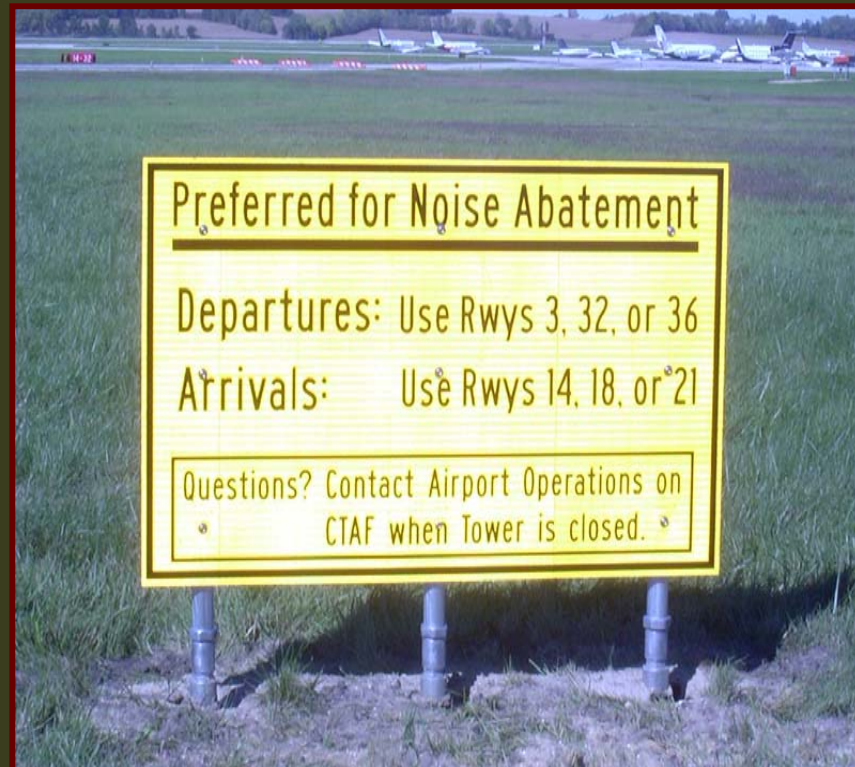
Prior notification of noise abatement procedures are provided to operators of charter flights and the airlines.



5/5/2010

# Review of Noise Abatement Compliance Audit

14



# Review of Noise Abatement Compliance Audit

15

OCT 09– MAR 10

% of time winds reported 5 knots or above <sup>1</sup>	71.87%
% of time visibility reported 6 SM or below <sup>1</sup>	32.33%
Total time Runways closed <sup>2</sup>	RWY 18/36 = 41:21
	RWY 3/21 = 508:32
	RWY 14/32 = 477:52

1 - Based on METAR weather observations at the time of recorded aircraft operations

2 - Runway closures primarily due to construction activity and snow and ice operations.



# Review of Noise Abatement Compliance Audit

OCT 09 – MAR 10

## Runway Use

% of time aircraft observed departing to North	79.95%
% of time aircraft observed arriving from North	42.18%
% of time aircraft observed departing to South	20.05%
% of time aircraft observed arriving from South	57.82%

	Wind	Visibility	Traffic	Low Clouds
Departure to South and reason	80%	42%	8%	31%
Arrival from South and reason	73%	42%	10%	50%

1735 individual aircraft operations observed

88 non-compliant operations observed 94.93% Compliance





## Contact Information

17

# Important Phone Numbers

24 Hour Aircraft Noise Line: **246-5841**

Madison Automated Weather: **249-0615**



# DCRA Noise Contours

18

