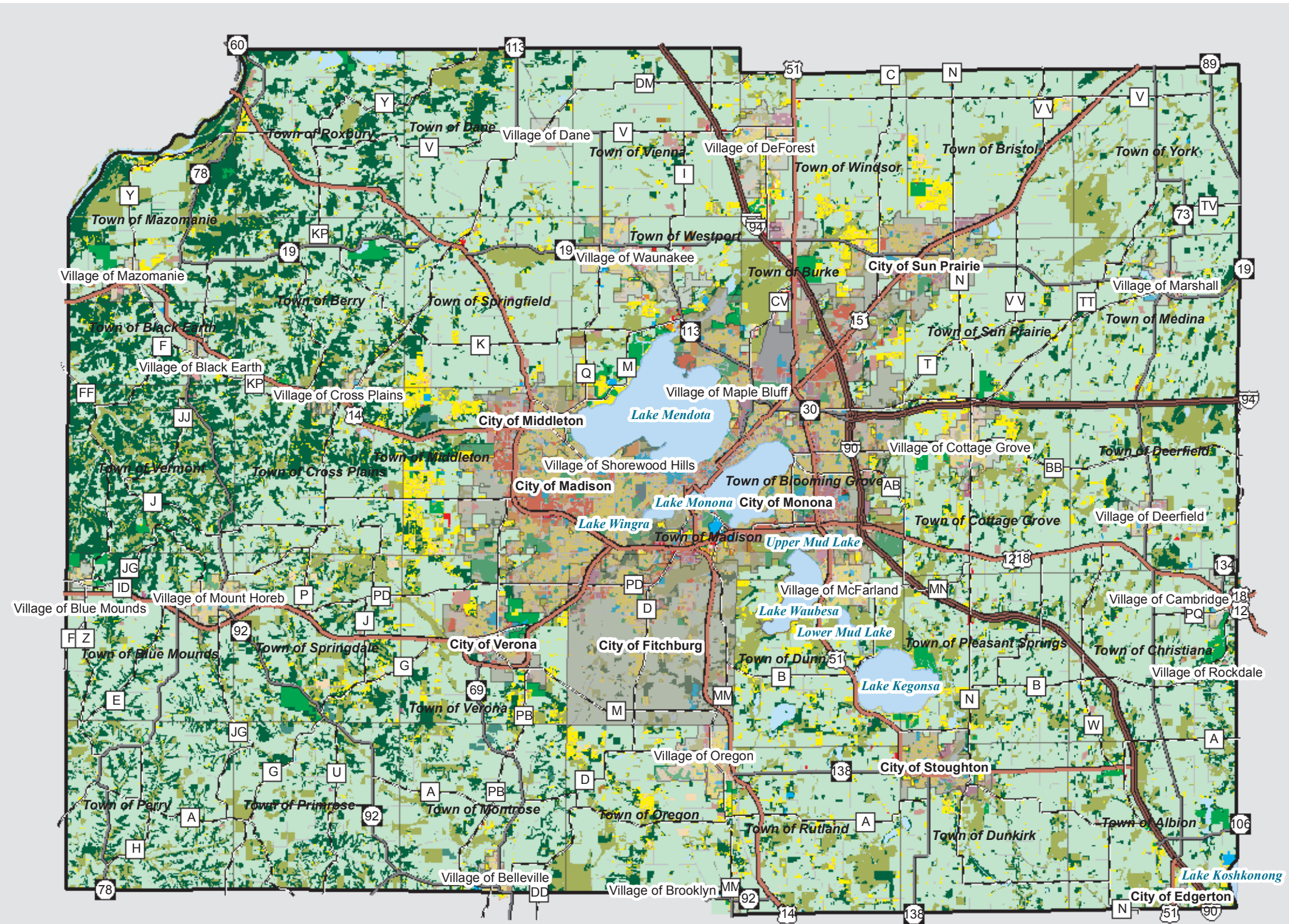




Dane County Comprehensive Plan  
 Dept. of Planning & Development  
 210 Martin Luther King Jr. Blvd.  
 Room 116  
 Madison, WI 53703  
 www.daneplan.org



**Land Use Categories**

2005	
	Agriculture
	Open Land
	Cemetery
	Outdoor Recreation
	Commercial Forest
	Right of Way
	Commercial Sales or Services
	Single Family
	Communications or Utilities
	Transportation
	Extractive
	Two Family
	Institutional or Governmental
	Multi-Family
	Under Construction
	Vacant
	Woodland

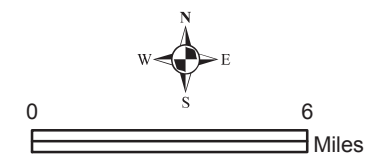
**Standard Legend**

	Interstate
	US Highway
	State Highway
	County Highway
	City
	Village
	Town
	Major Lake

**What you're looking at:**

The 2005 land use survey was conducted by the Community Analysis & Planning Division using parcel boundaries, aerial photography, site visits and community support. Land use points represent a centroid of a building that is being used for one of the categories identified.

For more information:  
<http://www.danecorpc.org>



June, 2007



Source Info: Land Use Points: 2005 (DCCAPD). Road Network: 2006, Parcel Derived (DCLIO). Municipal Boundaries & Water: 2007, Parcel Derived (DCLIO).

This map was prepared through the Department of Planning and Development in conjunction with the Land and Water Resources Department, Land Information Office and the Dane County Regional Planning Commission.