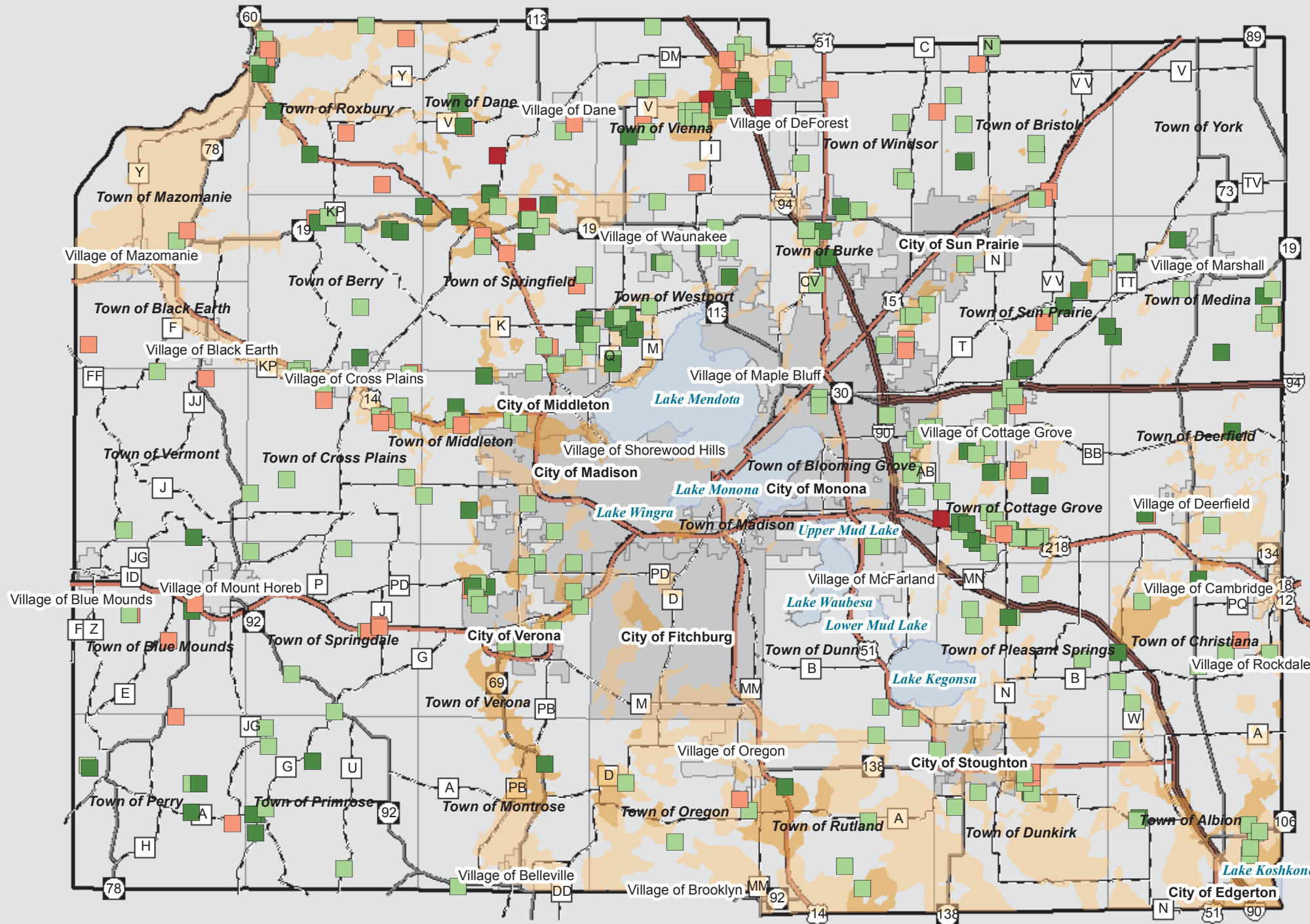




Dane County Comprehensive Plan  
 Dept. of Planning & Development  
 210 Martin Luther King Jr. Blvd.  
 Room 116  
 Madison, WI 53703  
[www.daneplan.org](http://www.daneplan.org)

# Mineral Resources



### Potential Sources of High Quality Sand & Gravel

- High Potential
- Low Potential

### Mineral Extraction Sites

- CUP Active
- CUP Expired
- Active
- Expired

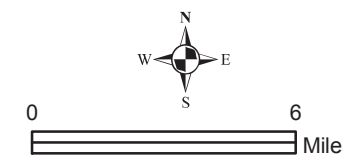
### Standard Legend

- Interstate
- US Highway
- State Highway
- County Highway
- City
- Village
- Town
- Major Lake

### What you're looking at:

**High Potential:** This is land that has deposits of material that has the best potential for containing high quality aggregate that may be used in asphalt and concrete ready mix.  
**Low Potential:** This is land that has deposits of material much less likely to contain high quality aggregate.

For more information:  
 contact the Dane County Zoning Department  
 at 608.266.4266, 608.266.9083  
<http://www.countyofdane.com/plandev/>



June, 2007



Source Info: Mineral Extraction Sites: 2005 (DCPD). Road Network: 2006, Parcel Derived (DCLIO). Municipal Boundaries & Water: 2006, Parcel Derived (DCLIO).

This map was prepared through the Department of Planning and Development in conjunction with the Land and Water Resources Department, Land Information Office and the Dane County Regional Planning Commission.