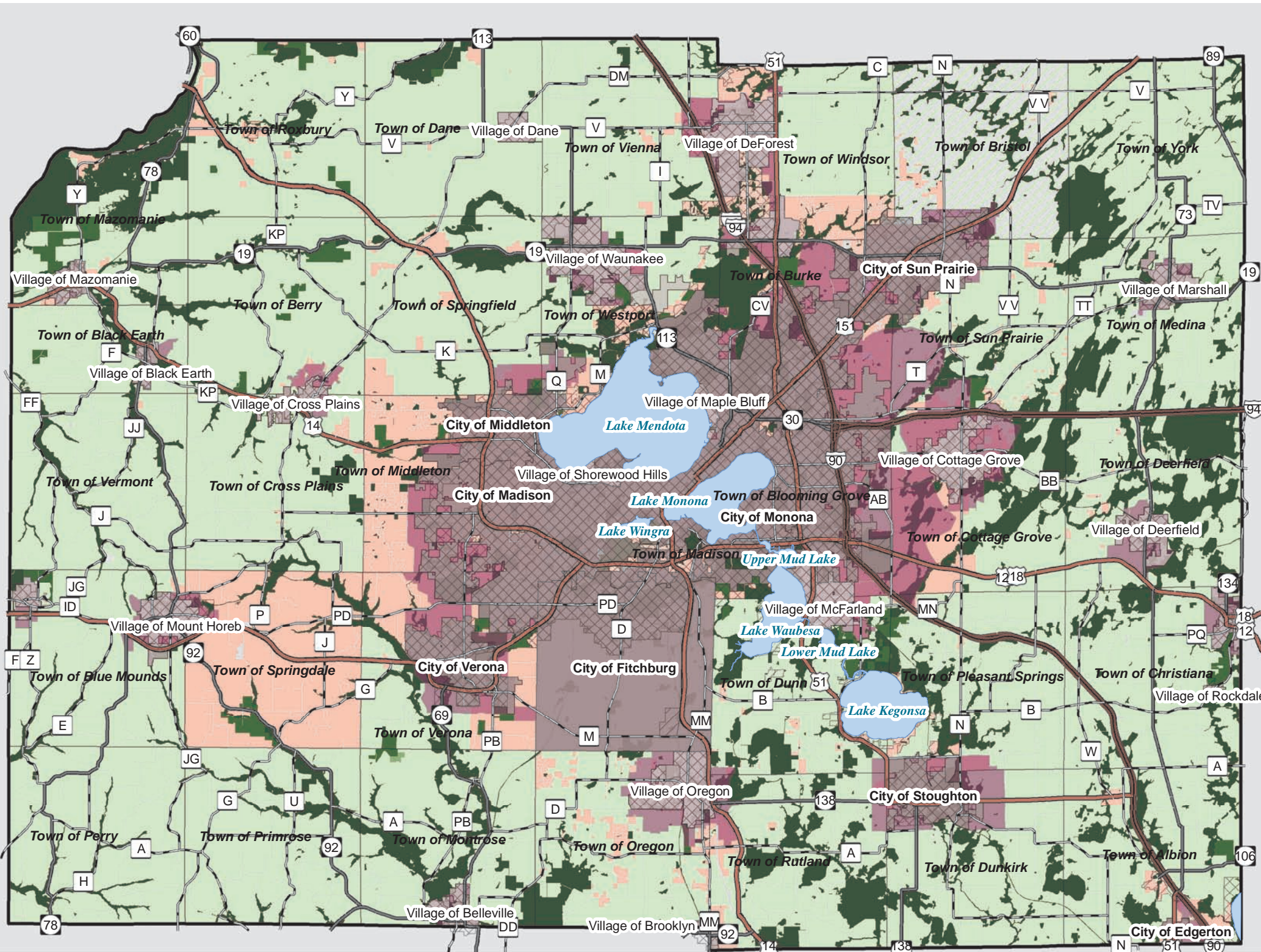




Dane County Comprehensive Plan
 Dept. of Planning & Development
 210 Martin Luther King Jr. Blvd. Room 116
 Madison, WI 53703
 www.daneplan.org



Legend

Farmland Preservation

- Agricultural Preservation Areas
- Rural Development / Transitional
- Town Ag. Preservation Areas

Service Areas

- Limited
- Urban

Env. and Open Space Corridors

-

Overlapping Plan Areas

- City and Village Plans

Parks and Open Space Plan

- Dane County Parks Commission Lands

Standard Legend

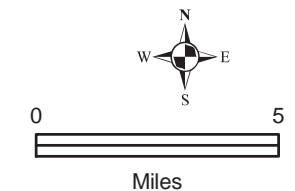
- Interstate
- US Highway
- State Highway
- County Highway
- City
- Village
- Town
- Major Lake

What you're looking at:

- The growth factors in Dane County:
1. Farmland Preservation Plan
 2. Service Areas
 3. Env. and Open Space Corridors
 4. Overlapping Plans
 5. Parks and Open Space

*See plan text for details on the map categories.

- For more information on individual features:
1. http://www.countyofdane.com/PLANDEV/planning/farm_preservation.aspx
 2. <http://www.capitalarearpc.org>
 3. <http://www.capitalarearpc.org>
 4. See the local plans for details and Wis Stat 59.69 and 66.1001.
 5. <http://www.countyofdane.com/lwr/parks/planning.aspx>



July 6, 2010



Source Info: Farmland Preservation & Overlapping Plan Areas (DPD). Park Commission Lands (LWRD). Service Areas & Envr. & Open Space Corridors (CARPC) Road Network: 2009 (DCLIO). Municipal Boundaries & Water: 2010 (DCLIO). This map was prepared through the Department of Planning and Development in conjunction with the Dane County Land & Water Resources Department, Land Information Office and the Capital Area Regional Planning Commission.

Planned Land Use

Currently Adopted Town Plans

Dane County Farmland Preservation Plan

Name	CB Adoption	Exec. Approval	Type	DCB Resolution	DCB Ordinance Amendment
Town of Albion	8/16/2007	8/21/2007	Comprehensive Plan	226 (06-07)	
Town of Berry	4/10/2003	4/15/2003	Comprehensive Plan	244 (02-03)	
Town of Black Earth	1/21/2010	1/25/2010	Comprehensive Plan	153 (09-10) sub 1	35 (09-10) sub 1
Town of Blooming Grove	9/7/2000	9/11/2000	Land Use Plan	47, 00-01	
Town of Blue Mounds	9/3/1998	9/8/1998	Amendment	75, 98-99	
Town of Bristol	5/7/1981		Land Use Plan	431, 80-81	
Town of Burke	9/23/1999	10/7/1999	Land Use Plan	20, 99-00	
Town of Christiana	4/1/2010	4/6/2010	Comprehensive Plan	255 (09-10)	49 (09-10)
Town of Cottage Grove	12/20/2007	12/27/2007	Comprehensive Plan Amendment	101, 07-08	
Town of Cross Plains	1/21/2010	1/25/2010	Comprehensive Plan	none	39 (09-10)
Town of Dane	11/7/2002	11/11/2002	Comprehensive Plan	49, 02-03	
Town of Deerfield	12/3/2009	12/8/2009	Comprehensive Plan Amend	none	36 (09-10) sub 1
Town of Dunkirk	7/19/2007	7/30/2007	Comprehensive Plan	208, 06-07	
Town of Dunn	9/4/2008	9/8/2008	Comprehensive Plan	52 (08-09)	12 (08-09)
Town of Madison			Never Adopted	--	
Town of Mazomanie	10/3/2002	10/16/2002	Comprehensive Plan	52, 02-03	
Town of Medina	4/1/2010	4/6/2010	Comprehensive Plan	256 (09-10)	50 (09-10)
Town of Middleton	12/3/1981		Land Use Plan	221, 81-82	
Town of Montrose	6/1/2000	6/14/2000	Comprehensive Plan Amendment	324, 99-00	
Town of Oregon	12/3/2009	12/8/2009	Comprehensive Plan		20 (09-10)
Town of Perry	6/2/2005	6/7/2005	Land Use Plan	360, 04-05	
Town of Pleasant Springs	9/7/2006	9/15/2006	Comprehensive Plan	49, 06-07	
Town of Primrose	7/13/1995	7/27/1995	Land Use Plan	56, 95-96	
Town of Roxbury	10/3/2002	10/16/2002	Comprehensive Plan	51, 02-03	
Town of Rutland	5/16/2007	5/21/2007	Comprehensive Plan	35, 07-08 (Sub 1)	
Town of Springdale	4/1/2010	4/6/2010	Comprehensive Plan	none	51 (09-10)
Town of Springfield	8/16/2007	8/21/2007	Amendment Sub 1	23, 07-08	
Town of Sun Prairie	1/21/2010	1/25/2010	Comprehensive Plan	Res 165 (09-10)	40 (09-10)
Town of Vermont	12/3/2009	12/8/2009	Comprehensive Plan	80 (09-10)	12 (09-10)
Town of Verona	4/1/2010	4/6/2010	Comprehensive Plan	none	52 (09-10)
Town of Vienna	12/7/2006	12/19/2006	Comprehensive Plan	144, 06-07	
Town of Westport	11/4/2004	11/11/2004	Comprehensive Plan	114,04-05	
Town of Windsor	12/7/2006	12/19/2006	Comprehensive Plan	243, 05-06	
Town of York	2/1/2007	2/6/2007	Comprehensive Plan	135, 06-07	