

**NOTE:**

- PROTECT LANDSCAPING- DAMAGED PLANTINGS SHALL BE REPLACED. RUTS AND OTHER DAMAGE TO SOD SHALL BE FILLED, SEEDED AND MULCHED.
- CLEAN ENTIRE FASCADE OF BUILDING AS PER SECTION 04900.
- WATERPROOF ENTIRE FASCADE WITH 'SILOXANE' WATER REPELLANT AS PER SECTION 07190.

SOUTH FACE OF ELEVATOR SHAFT  
TO RECEIVE NO WORK

AREA RECENTLY TUCKPOINTED-  
NO NEW WORK REQUIRED

BLDG.  $\phi$

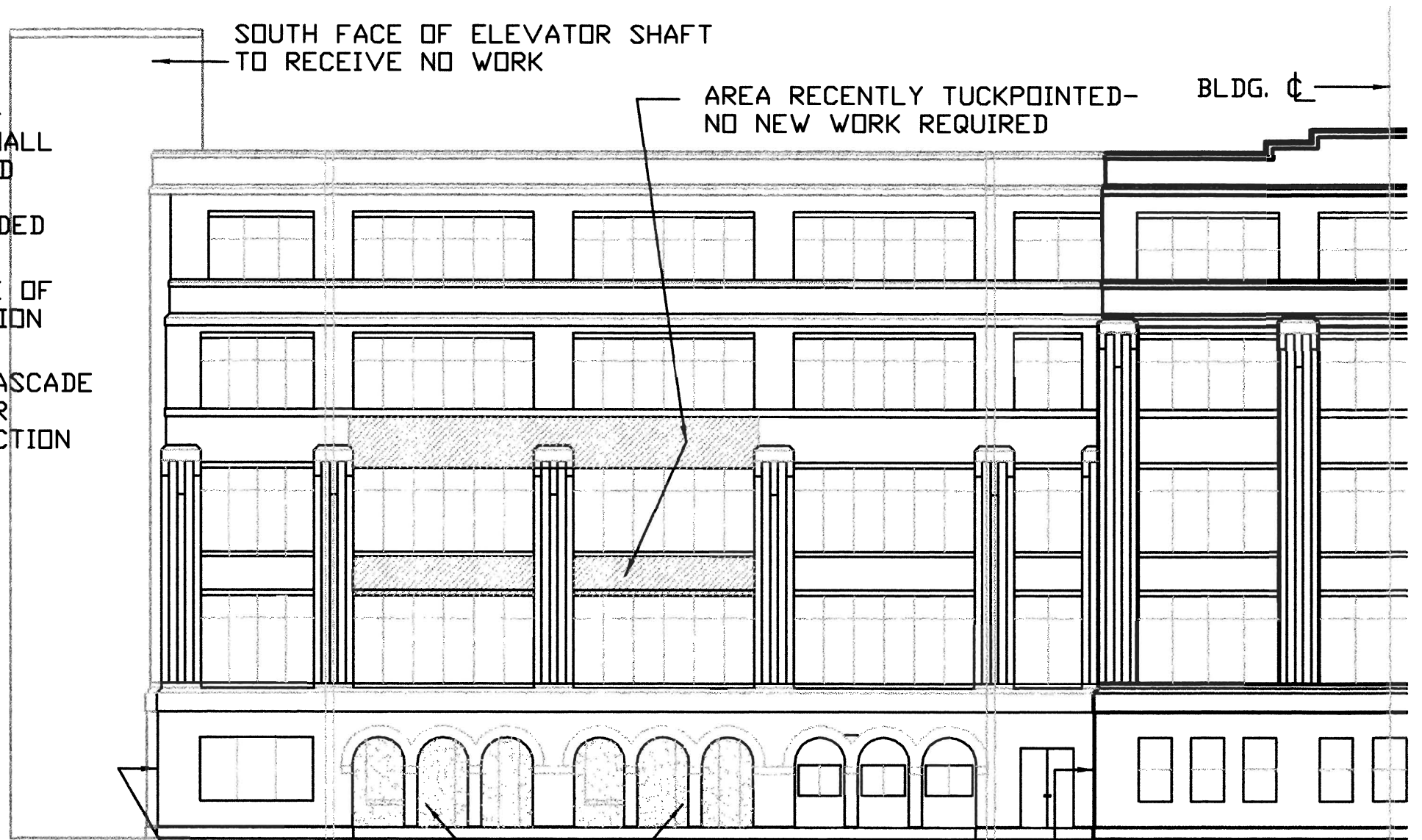
WORK INCLUDES WEST SETBACK  
FACE AND WEST ELEVATION FROM  
SETBACK FACE TO SOUTH FACE OF  
THE BUILDING

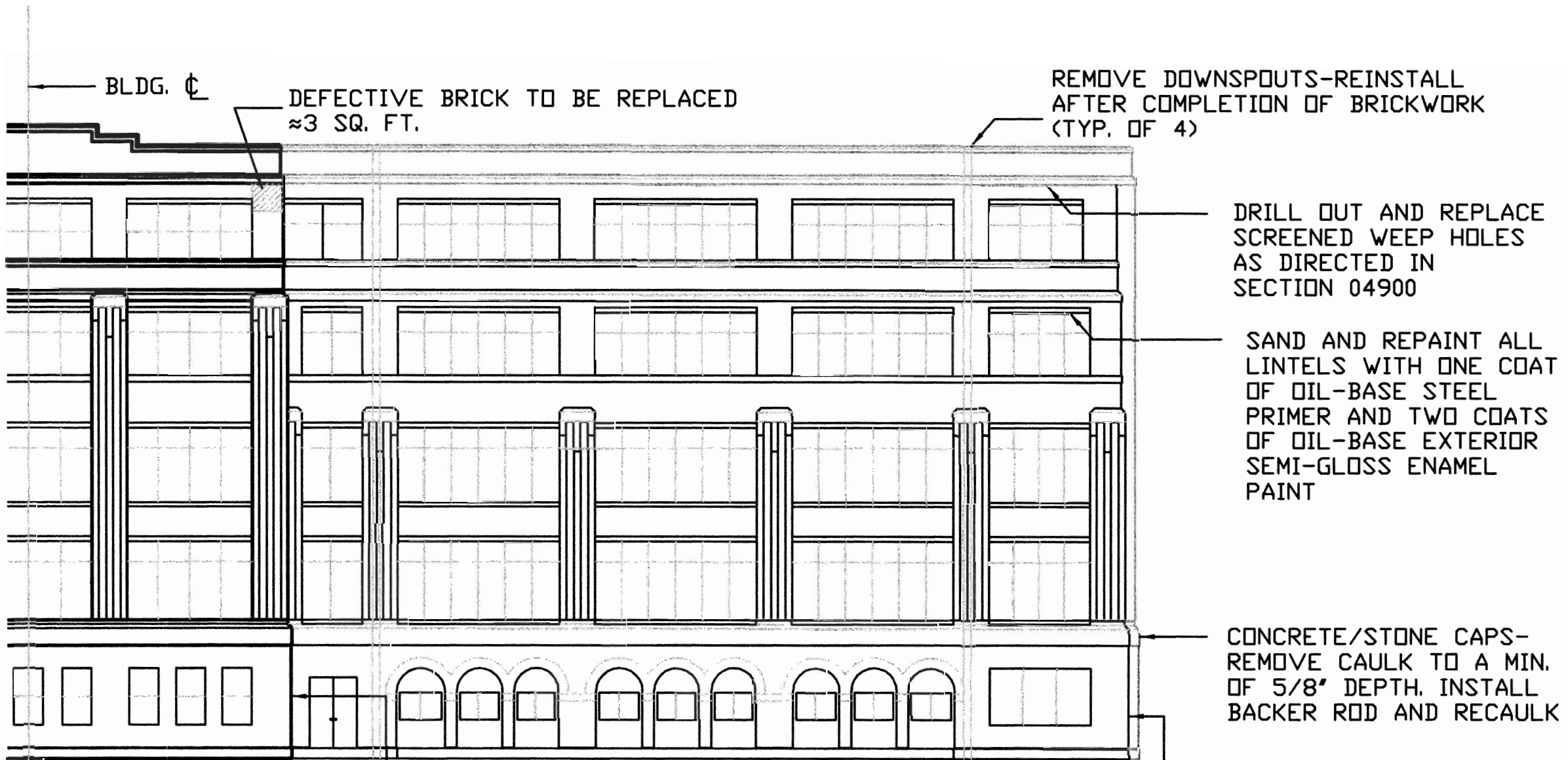
ALTERNATE 1: INCLUDES  
INTERIOR OF SOUTH WALL  
OF PATIO AREA.

ALTERNATE 2 INCLUDES  
ENTIRE WEST ELEVATION  
AT THIS LOCATION

SOUTH ELEVATION

SCALE: NONE





BLDG. C

DEFECTIVE BRICK TO BE REPLACED  
≈3 SQ. FT.

REMOVE DOWNSPOUTS-REINSTALL  
AFTER COMPLETION OF BRICKWORK  
(TYP. OF 4)

DRILL OUT AND REPLACE  
SCREENED WEEP HOLES  
AS DIRECTED IN  
SECTION 04900

SAND AND REPAINT ALL  
LINTELS WITH ONE COAT  
OF OIL-BASE STEEL  
PRIMER AND TWO COATS  
OF OIL-BASE EXTERIOR  
SEMI-GLOSS ENAMEL  
PAINT

CONCRETE/STONE CAPS-  
REMOVE CAULK TO A MIN.  
OF 5/8" DEPTH. INSTALL  
BACKER ROD AND RECAULK

SOUTH ELEVATION  
SCALE: NONE

ALTERNATE 2 INCLUDES  
ENTIRE EAST ELEVATION  
AT THIS LOCATION

WORK INCLUDES EAST SETBACK  
FACE AND EAST ELEVATION FROM  
SETBACK FACE TO SOUTH FACE  
OF THE BUILDING