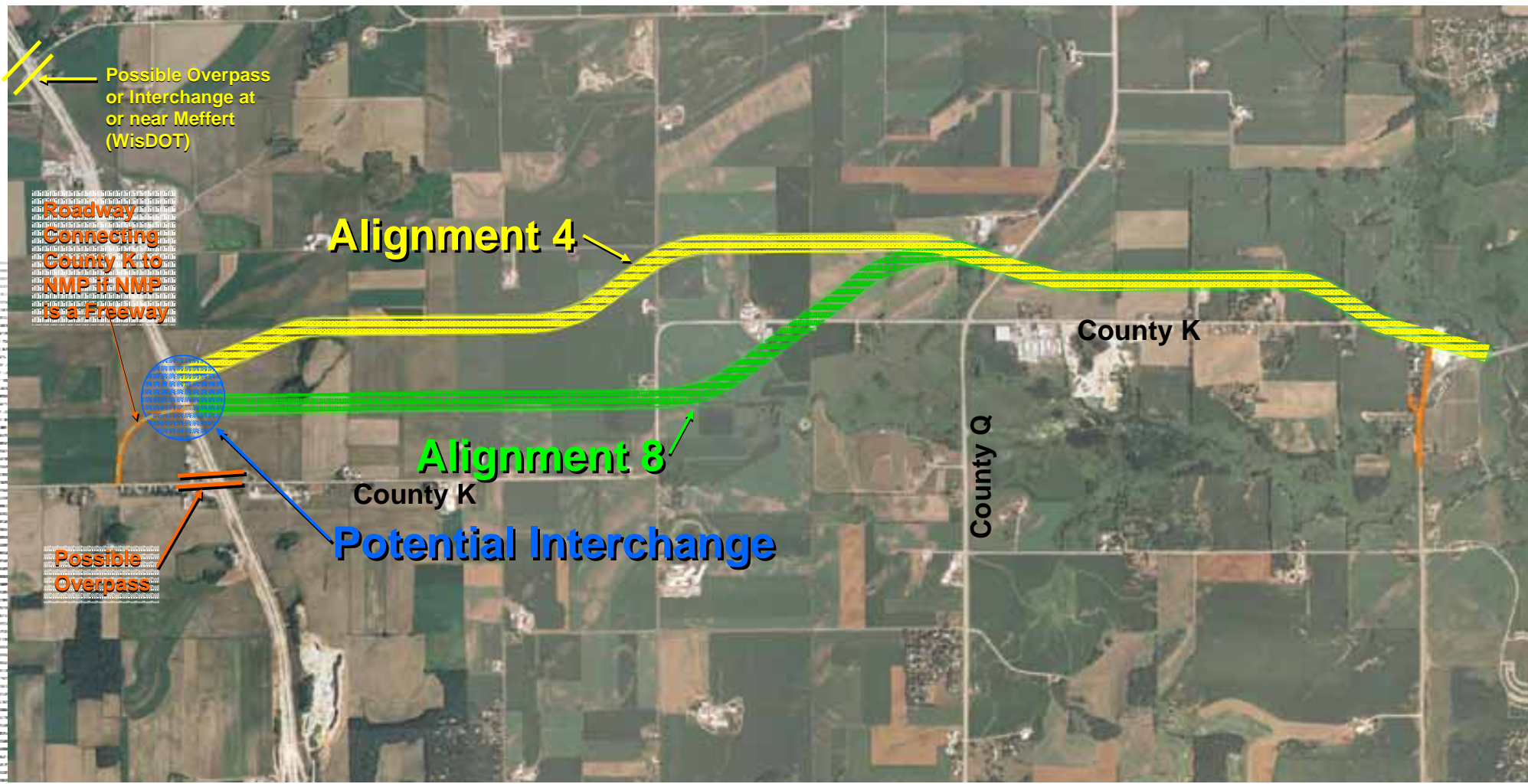


North Mendota Parkway Environmental and Transportation Study



Public Meeting
September 15, 2008





Possible Overpass or Interchange at or near Meffert (WisDOT)

Roadway Connecting County K to NMP is a Freeway

Alignment 4

County K

Alignment 8

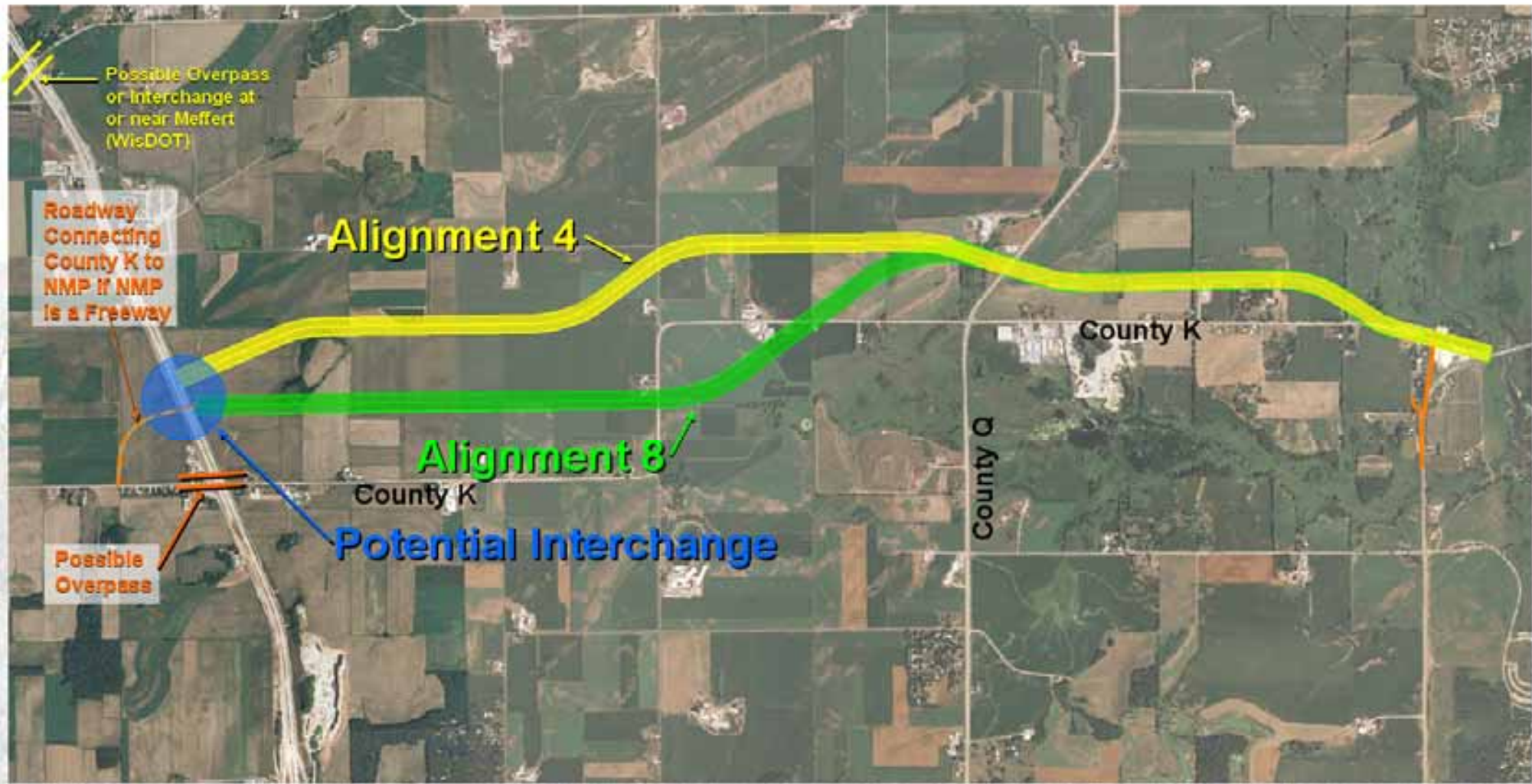
County K

County Q

Potential Interchange

Possible Overpass

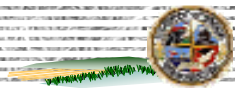






WisDOT policy –interchanges grade separations:

- In rural areas, service interchanges every six to eight miles provide reasonable access to local communities.
- In urban or developing areas, the desirable spacing is about two miles between the cross roads serviced by the interchanges. (FDM 11-5-5)
- In rural areas, grade separations every three to five miles provide reasonable access across a freeway facility.



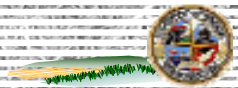
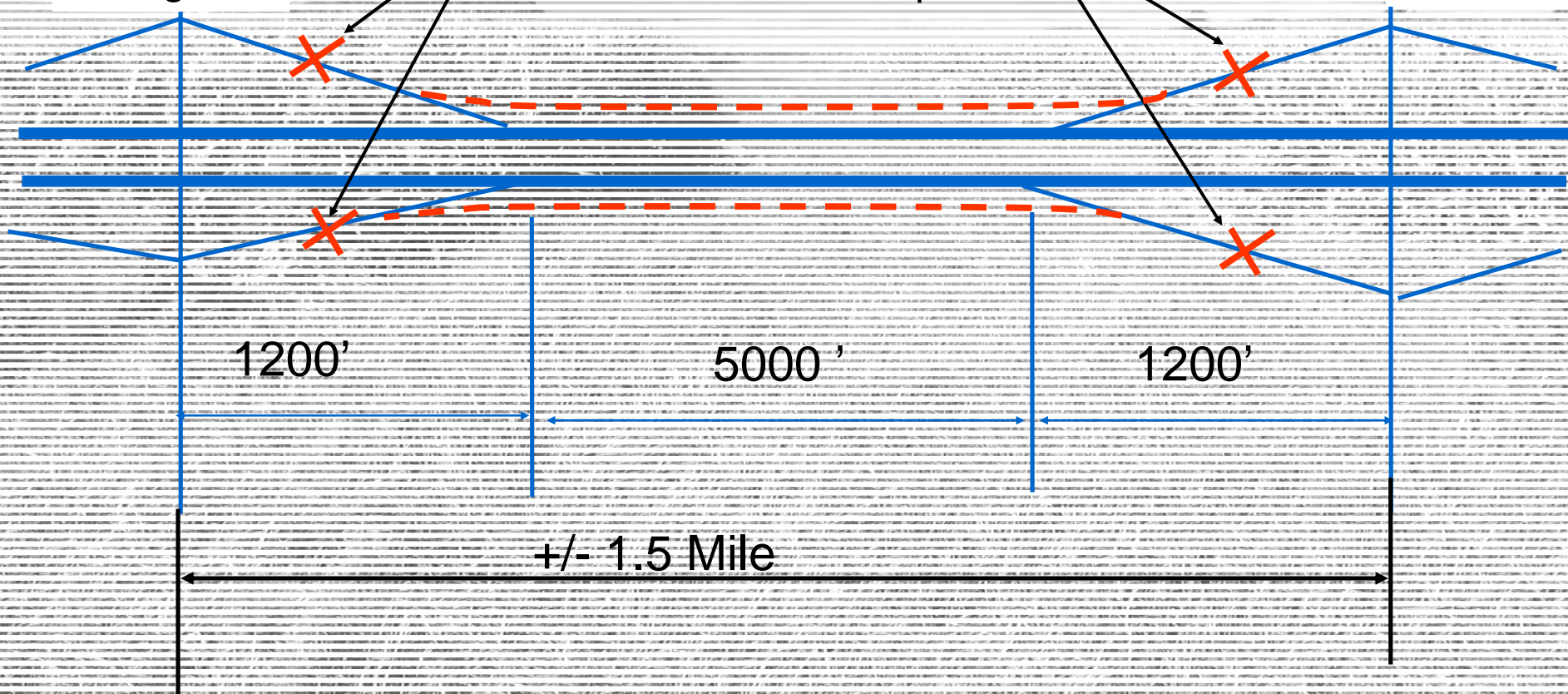
WisDOT Policy of Distance Between Interchanges According to FDM 11-30-1



2000+ vpd
Design Yr

Can Be Shorter Distance
without These Ramps

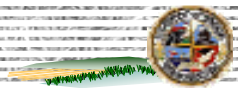
2000+ vpd
Design Yr

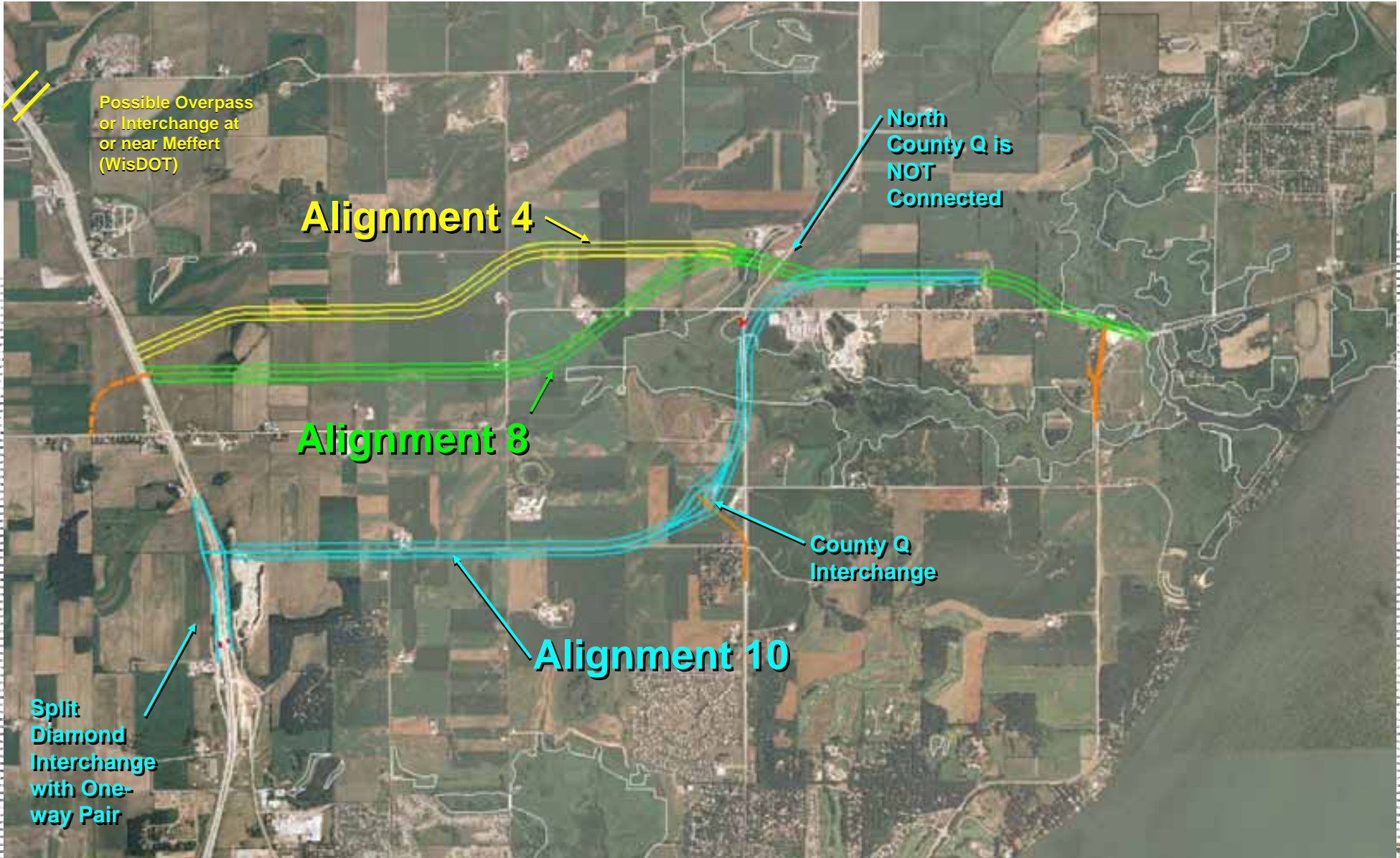




Stated Position by WisDOT in US 12 Freeway Designation and Conversion Study

- WisDOT will consider input from NMP recommendations for interchange placement on US 12
- WisDOT will consider allowing an interchange 1 mile or farther from Parmenter St interchange (At or north of County K)
- WisDOT is anticipating a locally initiated interchange request near or north of County K





Possible Overpass
or Interchange at
or near Meffert
(WisDOT)

Alignment 4

North
County Q is
NOT
Connected

Alignment 8

County Q
Interchange

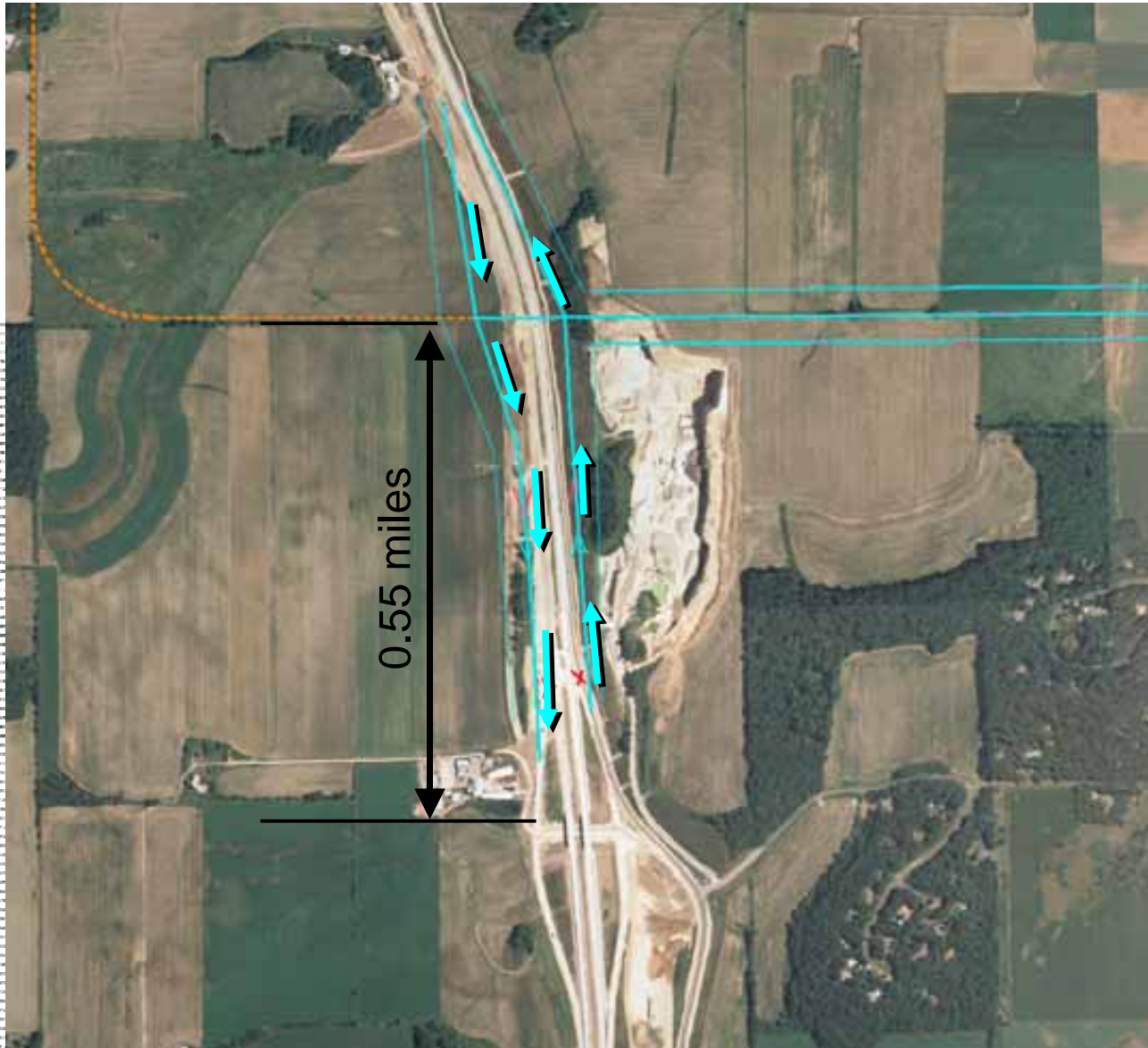
Alignment 10

Split
Diamond
Interchange
with One-
way Pair



Example: Johnson Creek





North Mendota Parkway Environmental and Transportation Study





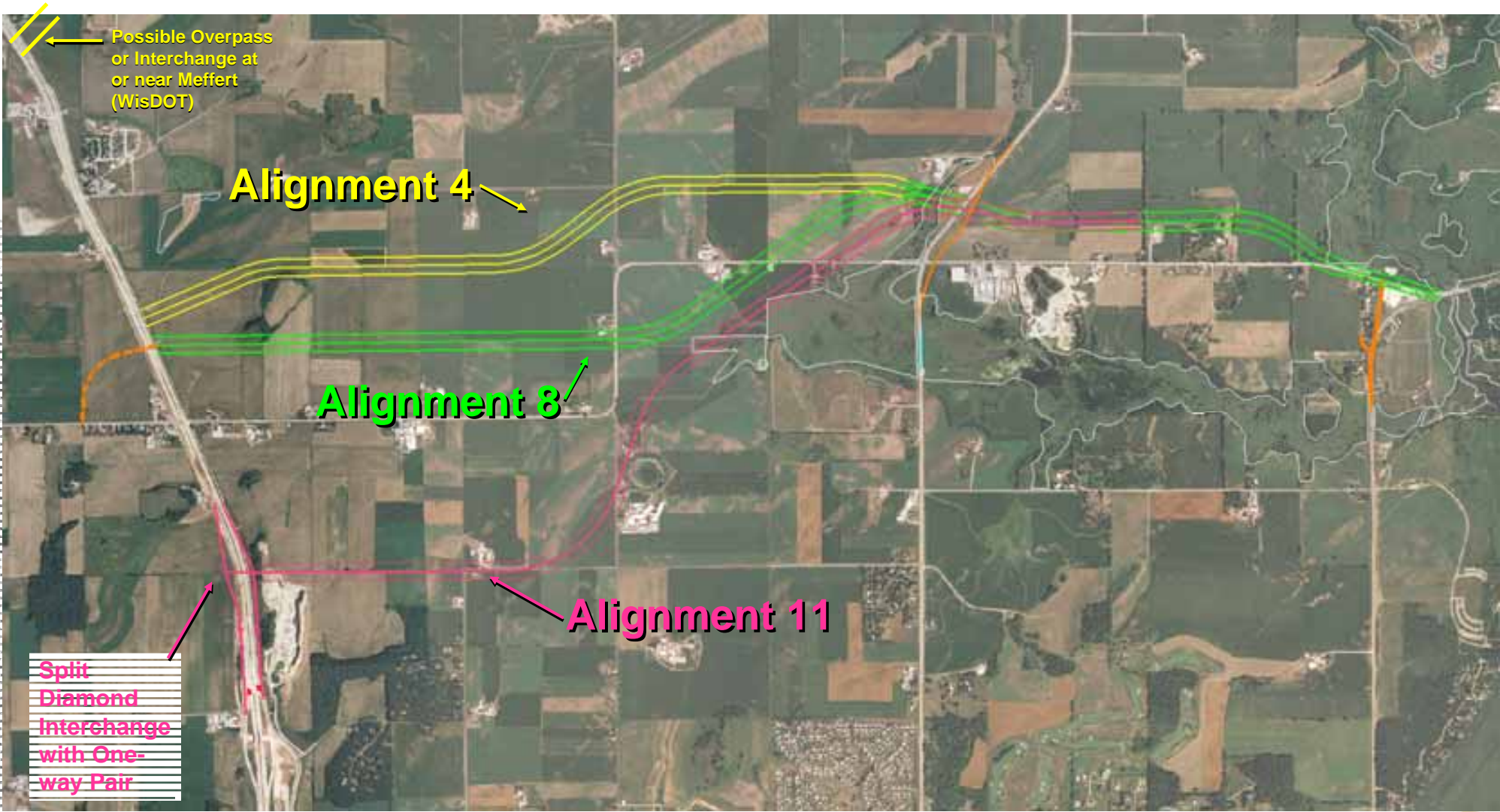
North Mendota Parkway Environmental and Transportation Study

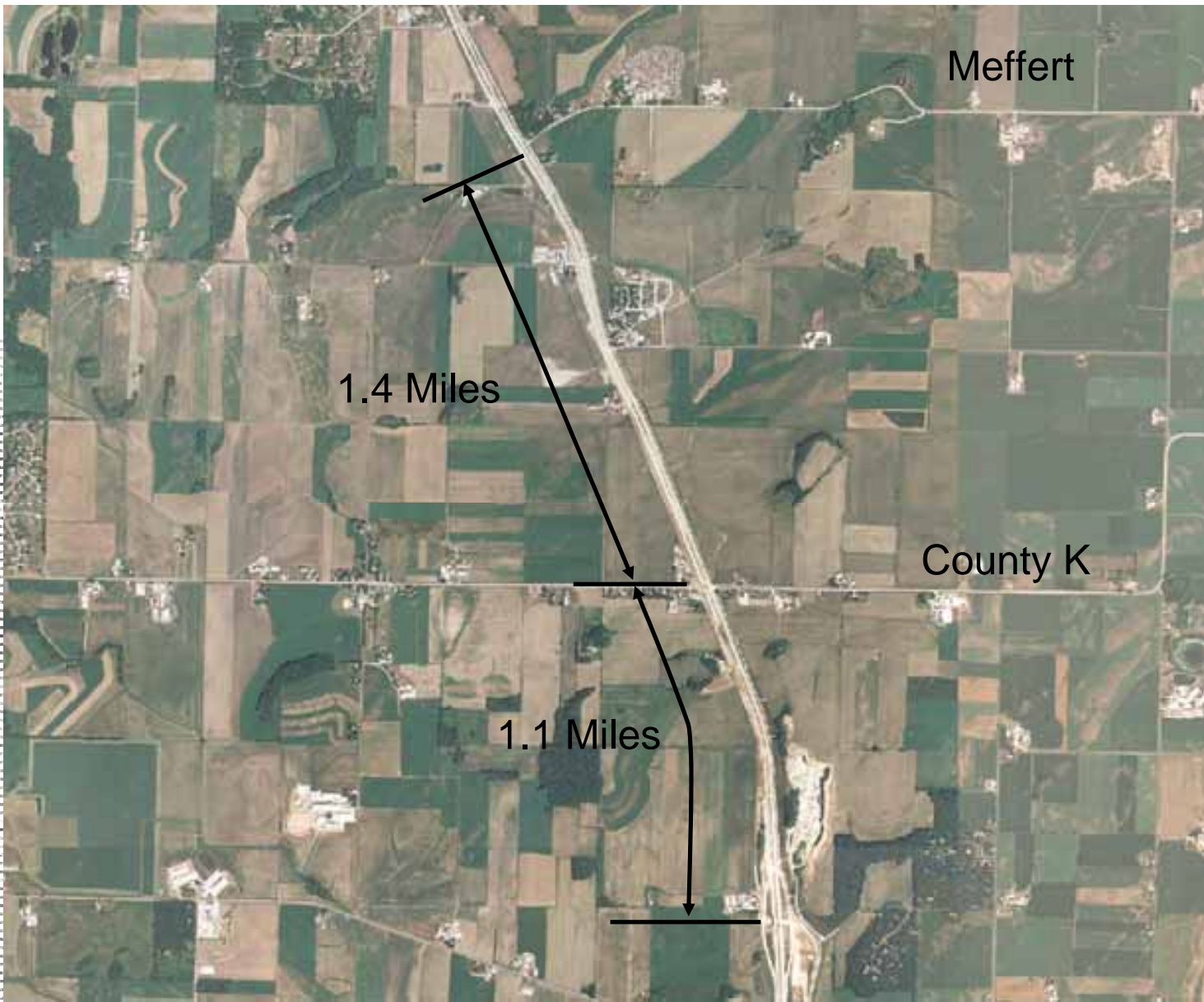




North Mendota Parkway Environmental and Transportation Study







Meffert

1.4 Miles

County K

1.1 Miles





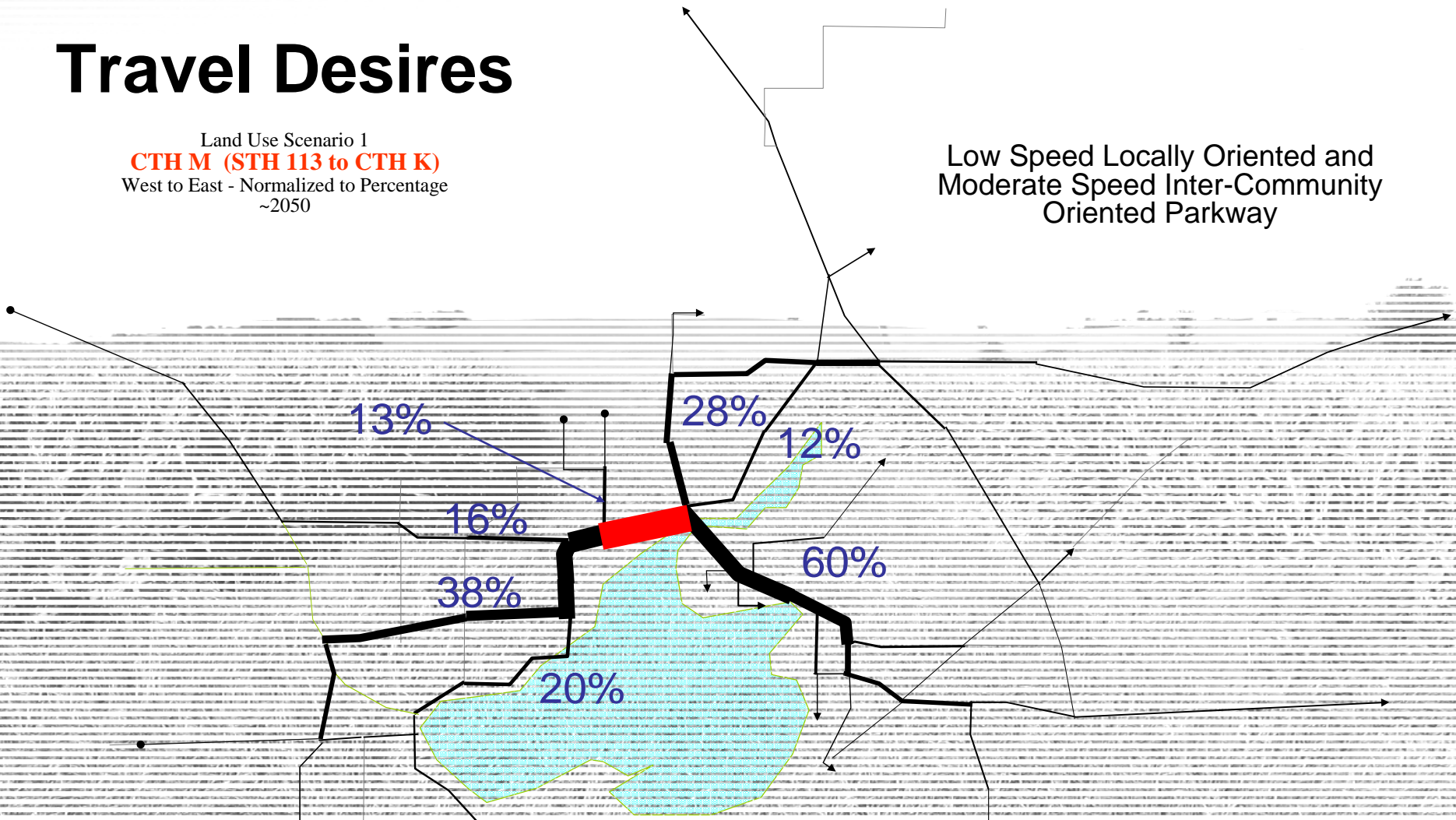
County K



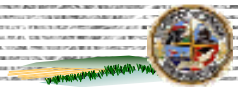
Travel Desires

Land Use Scenario 1
CTH M (STH 113 to CTH K)
West to East - Normalized to Percentage
~2050

Low Speed Locally Oriented and
Moderate Speed Inter-Community
Oriented Parkway



**Most Traffic Goes from North
Madison to West
Madison/Middleton**



North Mendota Parkway Environmental and Transportation Study



Public Meeting
September 15, 2008

