

North Mendota Parkway  
Environmental and Transportation  
Study



## June 2008

### Contact Information:

For more information about the North Mendota Parkway Environmental and Transportation Study contact:

Chris James  
Park Planner  
608-224-3763

Pam Dunphy, P.E.  
Assistant Highway Commissioner  
608-266-4036

### Public Meeting and Hearing

Monday, July 14, 2008  
5 to 7 PM  
City of Middleton Council  
Chambers  
7425 Hubbard Avenue  
Middleton, WI 53562  
608-827-1050

### Natural Resource Area

Phase 1 of the North Mendota Parkway Environmental and Transportation Study inventoried significant agricultural, natural, and recreational resources within the study area. The study area contains lands that contribute water to Lake Mendota through springs and waterways such as Frederick Springs, Dorn Creek, and Sixmile Creek. Additionally, some of the most productive farms in Dane County are found within the study area. Maintaining the necessary working agricultural lands surrounding these farms is critical to their long-term success.

Phase 1 also proposes a refinement to the existing designated Natural Resource Area. A Natural Resource Area is a classification within the Dane County Parks and Open Space Plan that seeks to identify lands containing high value natural environments.

An initial proposal of the Natural Resource Area refinement was presented at a public informational meeting in the Town of Windsor on October 22, 2007. The meeting and subsequent interaction with local officials provided valuable input. As a result of these meetings, the proposed Natural Resource Area boundary was revised. A copy of this revision is included in this newsletter and will be on display for comment at the July 14 Public Meeting.



### Roadway Alignments

The second phase of the study seeks to identify a corridor that can be preserved for a future North Mendota Parkway. The study is not determining what the roadway cross section will be. This decision will be made closer to the time the roadway will be constructed.

Four roadway options have been developed and are shown in this newsletter. They will be on display for comment at the July 14 Public Meeting. Options 1 and 2 generally follow existing roadways for portions of the alignment. Therefore these options will require more driveway relocations. Options 3 and 4 generally travel off existing roadways and, therefore, have fewer driveways.

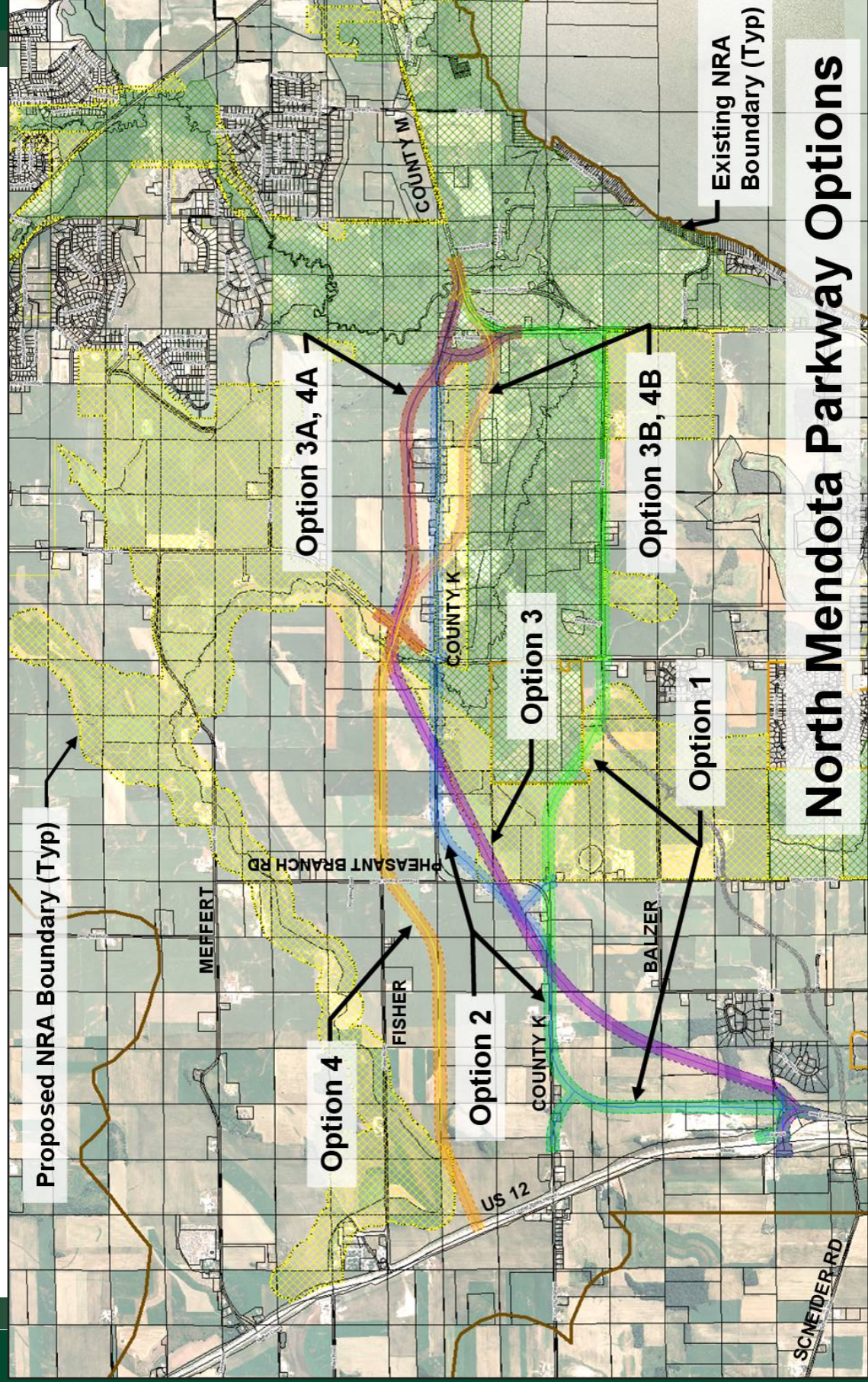
After this public meeting, the study team will perform a very preliminary design for the roadway alignment options meeting the greatest number of project objectives. The information from this preliminary design will be presented in a subsequent public involvement meeting this fall and documented in a report this winter.



July 14 Public Meeting and Hearing  
5 PM City of Middleton Council Chambers

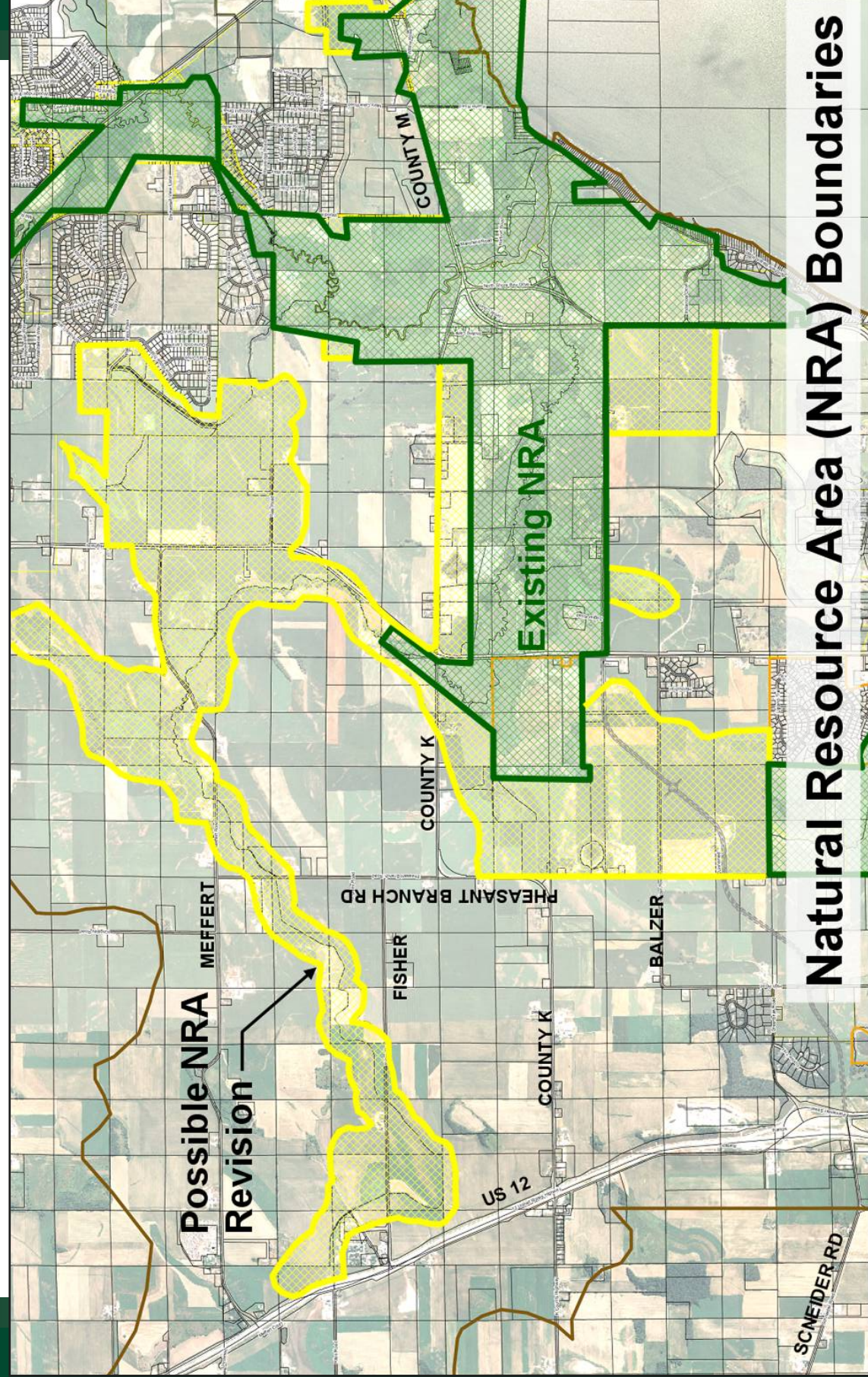
Dane County Land and Water Resources  
Dane County Public Works, Highways, and Transportation  
c/o Strand Associates Inc.  
910 West Wingra Drive  
Madison WI 53715

Dane County Land and Water Resources  
Dane County Public Works, Highways, and Transportation



## North Mendota Parkway Options

Note: At their May 12, 2008 meeting, the Implementation Oversight Committee recommended that Option 1 be dismissed from further consideration.



## Natural Resource Area (NRA) Boundaries