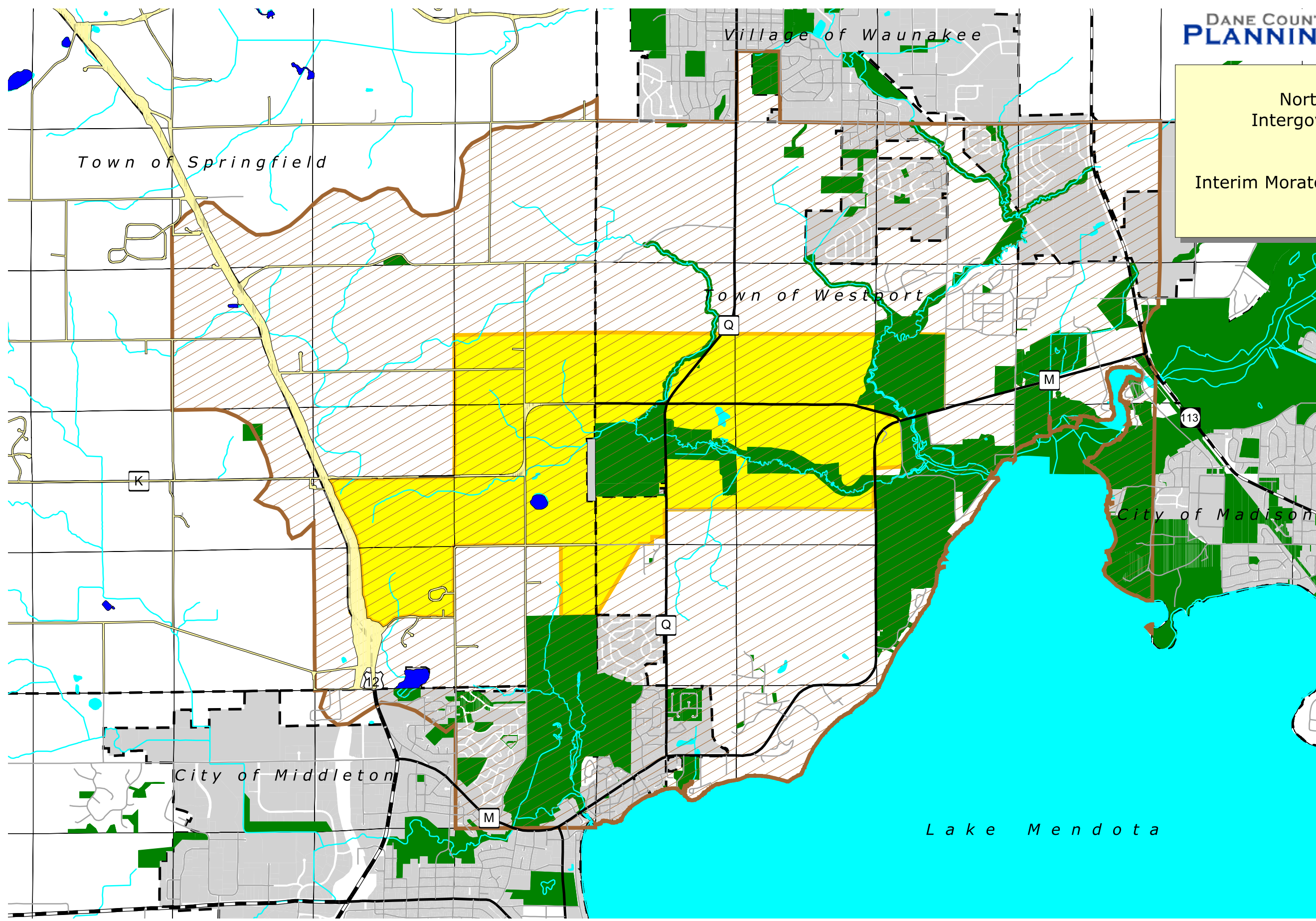


North Mendota Parkway  
Intergovernmental Agreement

Exhibit B:  
Interim Moratorium & Environmental Study

As approved by  
North Mendota Parkway  
Implementation Oversight  
Committee  
July 19, 2006 -- REVISED



**Legend**

- North Mendota Interim Moratorium Area
- North Mendota Environmental Study Area
- Water

**Roads & Highways**

- County Trunk Highway
- Interstate
- State Trunk Highway
- U.S. Highway

- Public Lands
- Municipalities

**Incorporated areas**

- CITY OF MADISON
- CITY OF MIDDLETON
- VILLAGE OF WAUNAKEE

Map prepared 7/24/2006  
Revised 7/25/2006  
by Dane Co. Planning & Development

