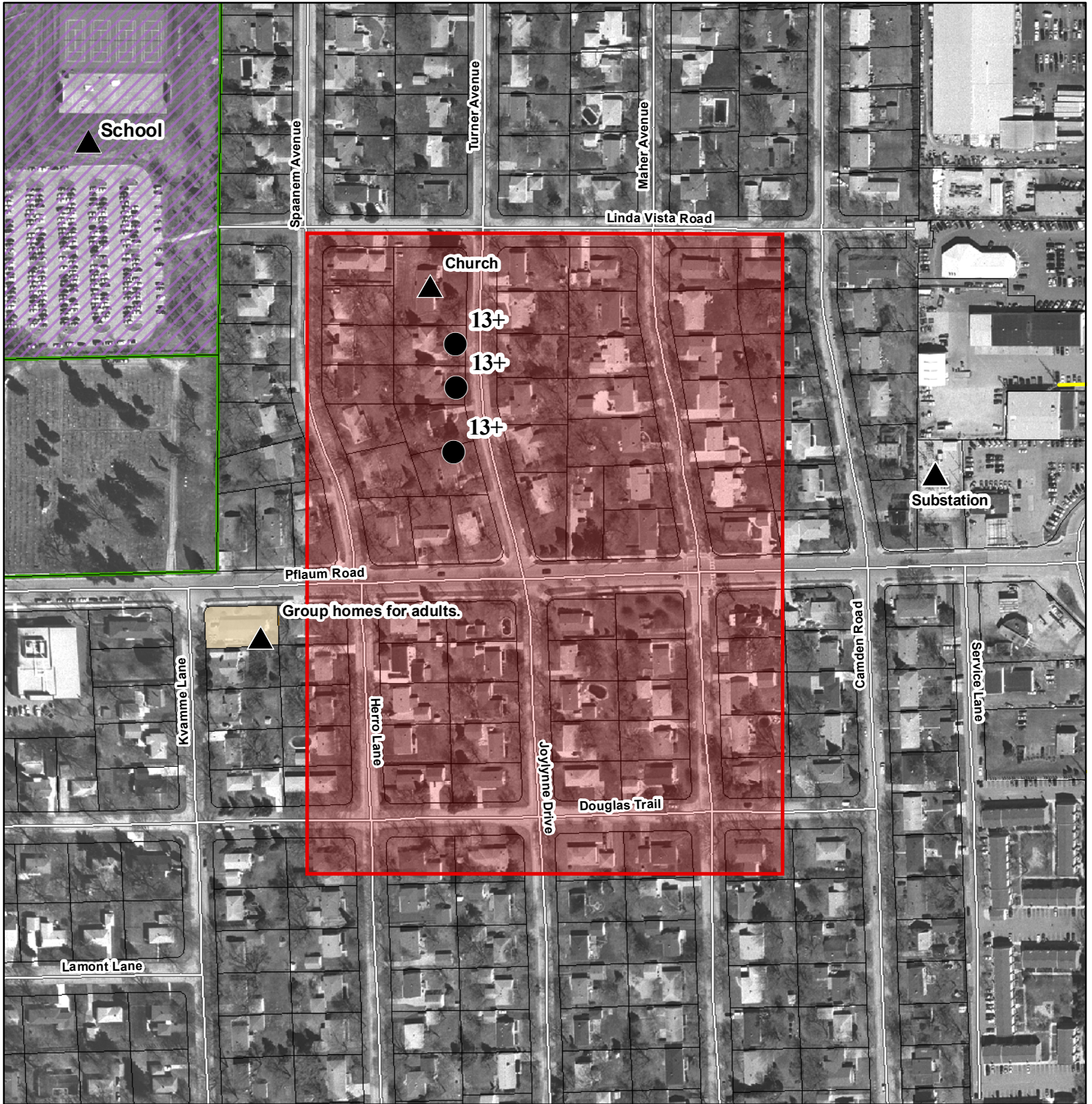


Proposed Dane County Gypsy Moth Treatment Area - 2010/11

Treatment Area: Madison4 (Turner Avenue) - Dane 4
 Municipality: City of Madison (T7N R10E, s. 16, 21)
 Size: 25.1 acres

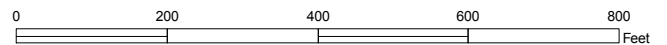


Map created 11/29/09 by Dane County LWRD.



Explanation

- Proposed Treatment Area
- Aerial Hazard/Institution
- Egg Mass Survey Plot (numeric label is approx. egg mass count)
- Transmission Line
- Education Land Use (includes schools)
- Publicly Owned Land
- Parcel Boundary



Data Sources:
 Treatment Areas / Egg Mass Data: Assembled by the Dane County Land & Water Resources Department (2010)
 Aerial Hazards: Public Service Commission (2002), Dane County (2/2006), ATC (12/1/2010), other municipal and institutional agencies (2007-2009)
 Transmission Lines: ATC (12/1/2010)
 Institutions: Land Use, Dane County (2005)
 Parcel Boundaries: Dane County (10/2010)
 Digital Orthophoto: Dane County (April 2005)

Aerial hazard information is approximate and may not be complete.