

---

## Town of Vienna Annex

---

### Community Profile

The Town of Vienna is located in north central Dane County. The Town is bordered on the north by Columbia County. The Village of DeForest and the Town of Windsor form the eastern boundary, the Town and Village of Dane form the western boundary, and the Village of Waunakee and the Town of Westport form the southern boundary.

The Town was created from a division of the Windsor territory in 1849, with the western half of the original town being divided to establish the Town of Dane in 1850. Vienna has remained a predominately agricultural community since its formation and has no cities, villages, or incorporated areas within its boundaries.

According to the United States Census Bureau, the Town of Vienna has a total area of 35.58 square miles, 35.58 square miles of it is land and 0.02 square miles is water.

As of the 2000 Census, there are 1,294 people, 461 households, and 329 families residing in the Town of Vienna. The population density is 36.4 people per square mile. There are 467 housing units at an average density of 13.1 units per square mile. The municipality population distributed by Dane County indicates that the 2008 population for Vienna was 1,401 people. The town has always been noted for its historically slow population growth rate.

There are 461 households out of which 38.4% have children under the age of 18 living with them, 14.5% of all households are made up of individuals and 4.8% have someone living alone who is 65 years of age or older. The average household size is 2.81 and the average family size is 3.12. In the Town of Vienna, the population is spread out with 26.4% under the age of 18, 7.3% from ages 18 to 24, 30.8% ages 25 to 44, 27.4% ages 45 to 64, and 8.0% who are 65 years of age or older. The median age is 36.8 years. 2.9% of the population speaks a language other than English at home and 19.3% of the population (above the age of 5) is disabled.

The median income for a household in the Town of Vienna is \$60,000 and the median income for a family is \$62,500. The per capita income for the Town of Vienna is \$24,783. 3.3% of individuals in the population and 1.6% of families are below the poverty line. Out of the total people living in poverty, 3.3% are under the age of 18 and 4.2% are 65 or older. 92.6% of the population over the age of 25 has at least a high school degree, while 17.2% of the population holds at least a bachelor's level degree.

### Hazard Identification and Risk Assessment

A hazard identification and vulnerability analysis was completed for the Town of Vienna using the same methodology in the base plan. The information to support the hazard identification and risk assessment for this Annex was collected through a Data Collection Guide, which was distributed to each participating municipality to complete.

---

The first step in a hazard analysis is to identify which hazards the community is vulnerable to. Table 1 outlines the hazard identification for the Town of Vienna based on the Data Collection Guide issued in 2008. The Data Collection Guide listed all of the hazards that could impact anywhere in Dane County. The purpose of this worksheet was to identify and rank the hazards and vulnerabilities specific to the jurisdiction. The Town of Vienna's planning team members were asked to complete the matrix by ranking each category on a scale of 0 to 3 based on the experience and perspective of each planning team member. A ranking of 0 indicated "no concern" while a ranking of 3 indicated "highest concern". This matrix appears as Table 1. This matrix reflects the significance of the hazards relative to one another.

This matrix reflects that the Town of Vienna assessed the following hazards as a high risk: flood, hail storms, lightning, tornado, windstorm and winter storm. The matrix indicates that the hazards of drought offers a medium risk, and the hazards of extreme heat and cold, erosion, fog, landslide, and wildfire offer minimal risk. The vulnerability established here is a qualitative assumption based on the impacts, geographic extent, probability of future occurrence, and magnitude/severity.

**Table 1 Vulnerability Assessment Matrix for the Town of Vienna**

Hazard	Hazard Attributes (1-2-3)			Impact Attributes (0-1-2-3)						Total
				Primary Impact (Short Term – Life and Property)			Secondary Impact (Long Term- Community Impacts)			
	Area of Impact	Past History, Probability of Future Occurrence	Short Term Time Factors	Impact on General Structures	Impact on Critical Facilities	Impact on At-Risk Populations	Social Impact	Economic Impact	Severity of other associated secondary hazards	
Dam failure										
Extreme Cold	1	1	1	0	0	2		1	1	<b>7</b>
Extreme Heat	1	1	1	0	0	2		2	1	<b>8</b>
Drought	2	1	1	0	0	0		3	2	<b>9</b>
Erosion	0	0	0	0	0	0		0	0	<b>0</b>
Flood	3	3	3	3	0	1		3	3	<b>19</b>
Fog	1	1	1	0	0	1		0	0	<b>4</b>
Hail Storm	3	3	3	2	0	0		3	3	<b>17</b>
Landslide	0	0	0	0	0	0		0	0	<b>0</b>
Lightning	3	3	2	2	2	1		3	3	<b>19</b>
Tornado	3	2	2	3	3	3		3	3	<b>22</b>
Wildfire	1	0	0	2	0	2		2	2	<b>9</b>
Windstorm	3	3	3	3	3	2		2	2	<b>21</b>
Winter Storm	3	3	3	1	0	2		2	2	<b>16</b>
Subsidence										
Other:										

---

## Previous Hazard Events

Through the Data Collection Guide, the Town of Vienna noted specific historic hazard events to include in the community profile. These events have been incorporated into the appropriate hazard chapters in the base plan. These events had a particular impact on the community beyond the impacts and events recorded in the Dane County Hazard Mitigation Plan. This is not a comprehensive summary of past incidents, as the hazard profiles collected in the main Mitigation Plan include other events that may have historically impacted the jurisdiction. The events noted by this jurisdiction in the Data Collection Guide include:

### ***Flood: Spring, Summer and Fall of 2008 (Continuous Occurrences)***

The Town of Vienna experiences flooding and high groundwater events regularly. Accumulated major water events, snow melt, heavy rains, etc. have caused flooding to many fields and covered many roads for prolonged periods of time. The events occur predominately in the central and southern portions of the town. While no injuries or deaths have been reported, the damages to property, infrastructure, and crops are extensive. Three roads have been closed for extended periods of time within the Town, and two of them need to be elevated. Reported losses include both insured and uninsured claims. A FEMA grant of approximately \$70,000 was made available to the Town for response actions to the flooding events. The Data Collection Guide indicates that this hazard is very likely to occur in the future.

## Asset Inventory

Assets include the people, property, and critical facilities within the Town of Vienna that are exposed to hazards in general. Inventories of property, essential infrastructure, and natural, cultural or historic resources help provide a comprehensive picture of the community and provide a method of assessing exposure to hazards by establishing the improved and total values, capacities and populations for these assets. It also forms the basis for estimating potential losses, where possible.

## Population

---

**Table 2 Vulnerable Population Summary**

Vulnerability Counts from the 2000 Census	Number	Percent
Total Population ages 5 or less	86	6.6%
Total population ages 5 to 19	286	22.1%
Total population over 65 years old	104	8.0%
Total Population with any Disability	124	19.3%
Families Below Poverty Level	6	1.6%
Individuals Below Poverty Level	43	3.3%
Total Population who Speak English less than "very well"	12	1.0%
<b>Total Population</b>	<b>1,294</b>	<b>-</b>

Data Source: 2000 US Census

## General Property

### Table 3 Property Exposure Summary

Property Type	Total Parcel Count	Improved Parcel Count	Improved Values (\$)	Content (\$)	Total Value (\$)
Residential	364	351	68,592,000	34,296,000	102,888,000
Agriculture	621	150	30,366,200	30,366,200	60,732,400
Other	142	66	17,764,300	8,882,150	26,646,450
Commercial Sales	12	9	3,758,300	3,758,300	7,516,600
Industrial	20	7	875,400	1,313,100	2,188,500
Commercial Services	4	4	3,315,900	3,315,900	6,631,800
Transportation	10	1	659,400	329,700	989,100
Institutional Government	3	-	-	-	-
Utilities	4	-	-	-	-
<b>Total</b>	<b>1,180</b>	<b>588</b>	<b>125,331,500</b>	<b>82,261,350</b>	<b>207,592,850</b>

Data Source: Dane County Land Information Office, December 2008

### Critical Facilities

The Town of Vienna has identified the following critical facilities important to protect from disaster impacts. These are collected in Tables 4 and 5. Table 4 is based on GIS data inventories from Dane County. Table 5 is supplemental data that was provided by the community through the Data Collection Guide.

### Table 4 Critical Facility Summary/Essential Infrastructures

Facility	Type*	No. of Facilities	Replacement Value (\$)
Child Care/Private Homes	VF	4	1,000,000
Communications Tower	EI	4	1,258,100
Electric Substation	EI	2	Unknown
FCC Tower	EI	2	258,100
Food Pantry	EI	1	712,800
Hazardous Chemicals	HM	2	168,500
Historic Site	VF	2	201,400
Municipal Hall	EI	1	0
<b>TOTAL</b>		<b>18</b>	<b>3,598,900</b>
*EI: Essential Infrastructure; VF: Vulnerable Facilities; HM: Hazardous Materials Facilities			

Data Source: Dane County GIS and Town of Vienna data.

## Other Assets

Other assets help define a community beyond the current composition of the Town of Vienna. These assets may provide economic benefit to the community, in addition to preserving the heritage and diversity of the community and may include natural, cultural and historic assets or economic assets such as major employers. It may also include more specific detail on critical facilities. The Town of Vienna has identified these other assets in Table 5. Hazard specific vulnerabilities are noted, where known.

**Table 5 Other Specific Assets for the Town of Vienna**

Name of Asset	Type*	Replacement Value (\$)	Occupancy/ Capacity (#)	Hazard Specific Issues
<b>Vienna Town Hall/Garage</b>	EI	500,000.00	50	
<b>Office &amp; Road Equipment</b>	EI	500,000.00	Office & Road Equipment	
*EI: Essential Infrastructure; VF: Vulnerable Facilities; HM: Hazardous Materials Facilities; NA: natural assets				

Data Source: Data Collection Guide

## Vulnerability to Specific Hazards

This section details vulnerability to specific hazards, where quantifiable, and where it differs from that of the overall County. The previous inventory tables quantify what is exposed to the various hazards within the Town of Vienna. Table 6 cross-references the hazards with the various tables where exposure or vulnerability specifics are found. The intent of Table 6 is to quantify, where possible, future impacts of each hazard on the jurisdiction. In many cases it is difficult to estimate potential losses, so the overall exposure of populations, structures, and critical facilities is referenced.

**Table 6 Hazard Vulnerability Specifics**

Hazard	Populations	Structures	Critical Facilities	Future Damage Potential
<b>Dam Failure</b>	None	None	None	Specifics unknown; See hazard profile in County Plan
<b>Drought</b>	Minimal	None	Minimal	Specifics unknown; See hazard profile in County Plan
<b>Flooding</b>	See section below	See section below	See section below	See section below
<b>Fog</b>	Minimal	None	None	Specifics unknown; See hazard profile in County Plan
<b>Hailstorm</b>	Minimal	See Property Exposure table 3	See Critical Facility Inventory Table(s)	Specifics unknown; See hazard profile in County Plan
<b>Landslide/ Sinkholes/ Erosion</b>	Minimal	Minimal	Minimal	Specifics unknown; See hazard profile in County Plan
<b>Lightning</b>	See Table 2 Population	See Table 3 Property Exposure	See Critical Facility Inventory Table(s)	Specifics unknown; See hazard profile in County Plan

Hazard	Populations	Structures	Critical Facilities	Future Damage Potential
<b>Severe Cold</b>	See Table 2 Population	See Table 3 Property Exposure	See Critical Facility Inventory Table(s)	Specifics unknown; See hazard profile in County Plan
<b>Severe Heat</b>	See Table 2 Population	None	Minimal	Specifics unknown; See hazard profile in County Plan
<b>Severe Winter Storm</b>	See Table 2 Population	See Table 3 Property Exposure	See Critical Facility Inventory Table(s)	Specifics unknown; See hazard profile in County Plan
<b>Tornado</b>	See Table 2 Population	See section below	See Critical Facility Inventory Table(s)	See section below
<b>Wildfire</b>	Minimal	Minimal	Minimal	Specifics unknown; See hazard profile in County Plan
<b>Windstorm</b>	See Table 2 Population	See Table 3 Property Exposure	See Critical Facility Inventory Table(s)	Specifics unknown; See hazard profile in County Plan

## **Flood**

### **Structures in the Floodplain**

Some assets are specifically vulnerable to floods, due to their location. These assets are collected in Table 7. Refer to the flood profile in the mitigation plan for a description of the methodology used to identify potentially flood-prone properties. The locations of properties within the floodplains are shown in Figure 1, in addition to flood hazard areas and planned land use.

**Table 7 Potentially Flooded Property Summary and Loss Estimate (DFIRM 100 – year)**

Property Type	Improved Parcel Count	Improved Values	Content	Total Values (Content & Imp.)	Estimated Loss
Other	2	\$7,000	\$3,500	\$10,500	\$2,100
<b>Total</b>	<b>2</b>	<b>\$7,000</b>	<b>\$3,500</b>	<b>\$10,500</b>	<b>\$2,100</b>

Data Source: Dane County GIS, 2008 DFIRM

Based on the average household size in Dane County and the count of residential parcels in the floodplain, there are no people exposed to either the 100 or 500 year floodplains in the Town of Vienna.

### **Repetitive Loss Properties and Flood Insurance Policies**

There are no repetitive loss properties in the Town of Vienna.

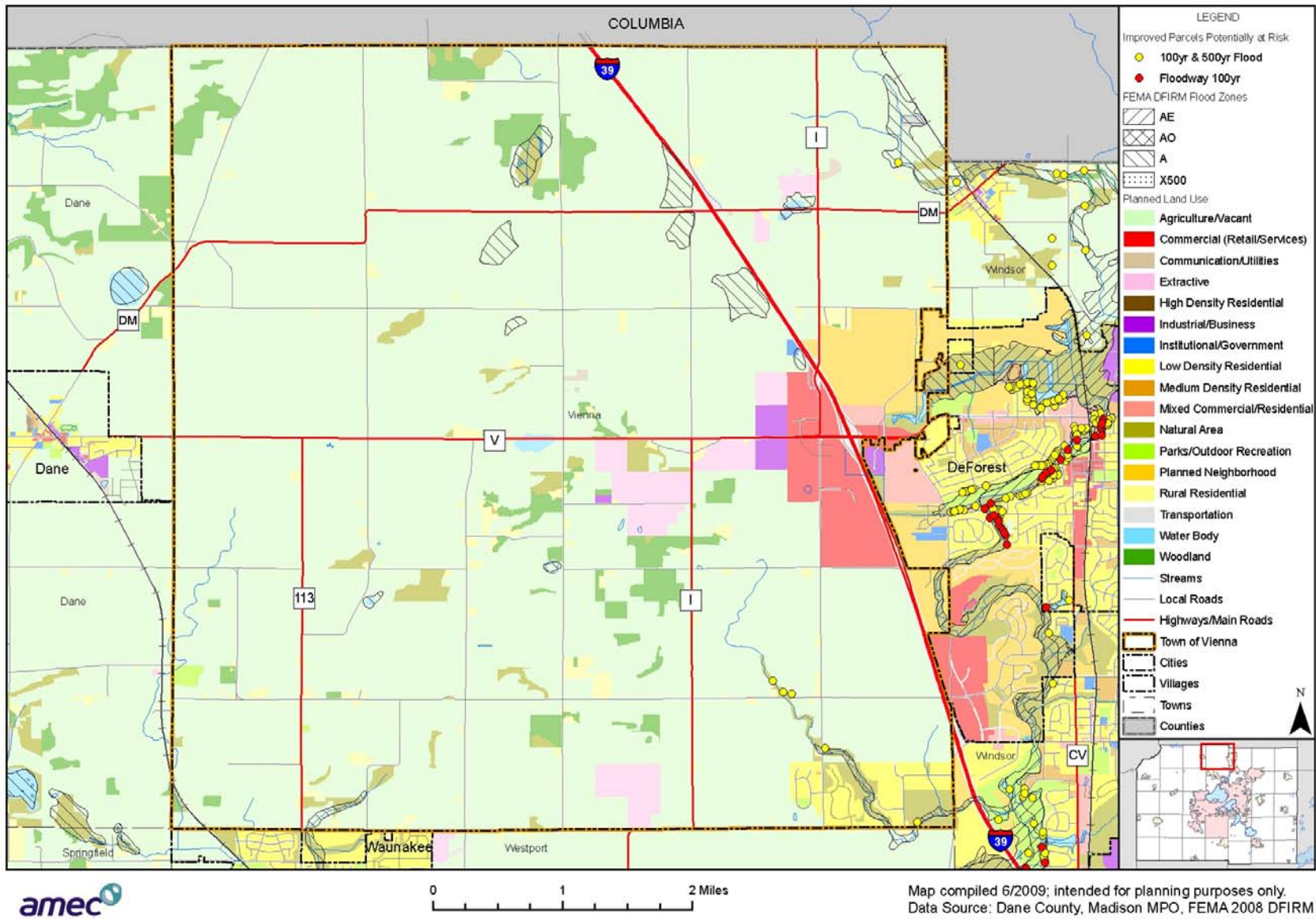
Specific NFIP policy information is available only for Cities and Villages in Dane County and is not available by Town.

---

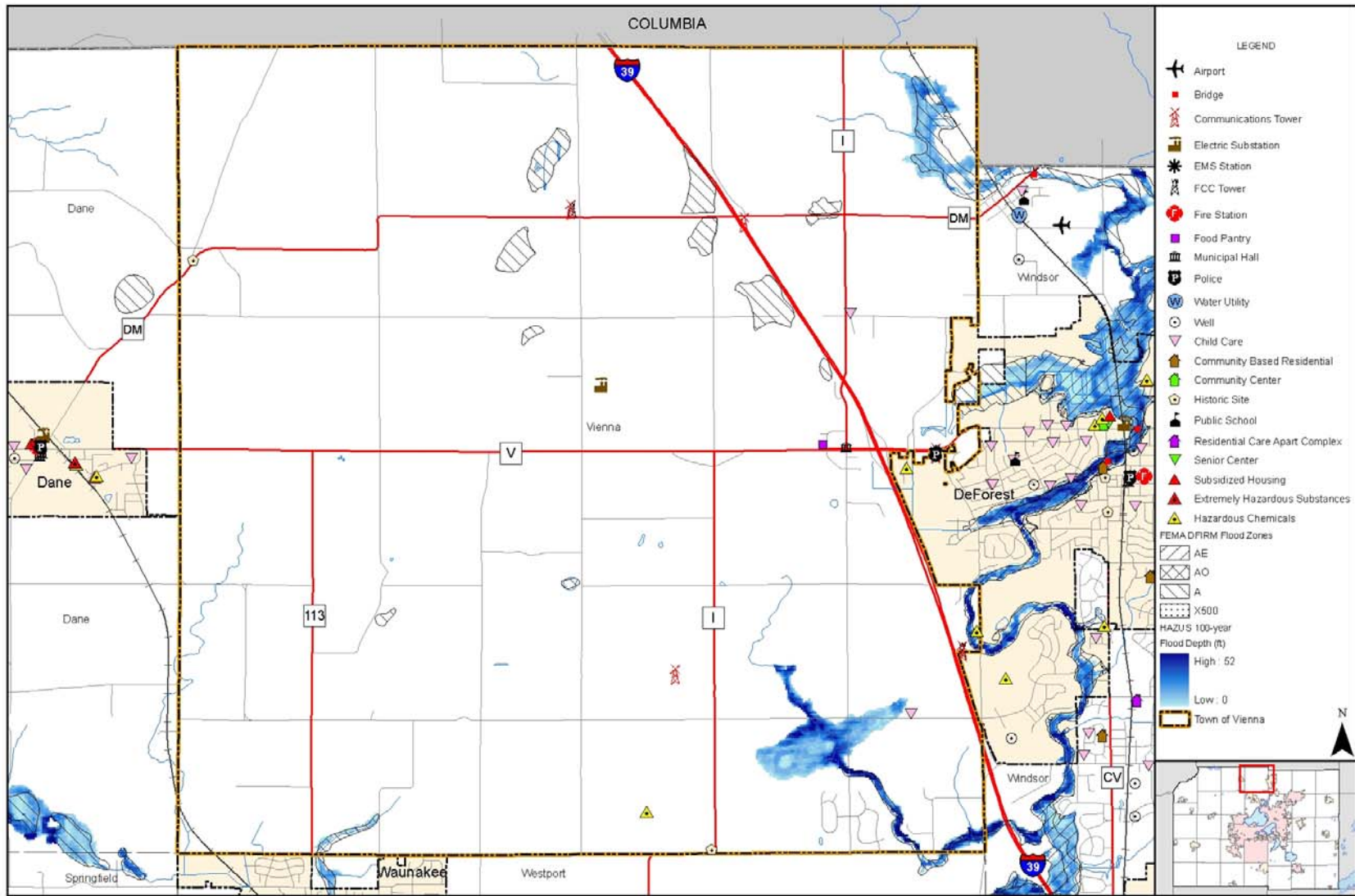
## **Critical Facilities**

There are no potentially flooded critical facilities in the Town of Vienna.

**Figure 1 Flood Hazards and Future Land Use Map**



**Figure 2 Flood Hazards and Critical Facilities Map**



0 1 2 Miles

Map compiled 6/2009; intended for planning purposes only.  
Data Source: Dane County, FEMA 2008 DFIRM, HAZUS-MH MR3

**Tornado**

While it is difficult to estimate specific losses to a tornado due to the random nature of the event, a methodology was developed that was applied to each jurisdiction during the 2009 update. The table below estimates the percent area of the jurisdiction that could be impacted based on the average sized tornado (F2) in Dane County. High value exposure is based on 100% loss, medium 50% loss, and low is 25% loss to the property potentially impacted. The loss ratio, which is the ratio of the damaged building value to total exposed building value, is a measure of the impact to the jurisdiction as a whole. Communities with loss ratios 10% or more may have difficulty recovering from a disaster. Refer to the tornado hazard profile in the main mitigation plan for more details on this methodology.

**Table 8 Tornado Loss Estimate**

% area impact	Improved Parcel Count	Affected Structure Estimate	Total Exposed Value	Estimated Loss \$ (High Damage Range)	Estimated Loss \$ (Moderate Damage Range)	Estimated Loss \$ (Low Damage Range)	Loss Ratio for Moderate Damage Range
3.38%	720	24	253,634,825	8,569,798	4,284,899	1,071,225	1.7%

Data Source: Analysis Based on Dane County Land Information Office's data

**Growth and Development Trends**

Planned land use is shown in Figure 1, in relation to the flood hazard. Table 9 illustrates how the Town of Vienna has grown in terms of population and number of housing units between 2000 and 2008. Table 10, drawn from the Demographic Services Center at the Wisconsin Department of Administration and Town of Vienna data, shows population projections through 2020.

**Table 9 Town of Vienna Change in Population and Housing Units, 2000-2008**

2000 Population	2008 Population	Percent Change (%) 2000-2008	2000 # of Housing Units	2008 # of Housing Units	Percent Change (%) 2000-2008
1,294	1,401	8.3%	467	500	7.06%

Data Source: Dane County and Town of Vienna Comprehensive Plan

**Table 10 Town of Vienna Population Projections, 2005-2025**

Population Projection	2005	2010	2015	2020	2025
Projection of Population Growth	1,288	1,420	1,430	1,450	1,500

Data Source: Demographic Services Center, Wisconsin Department of Administration, 2004, and Town of Vienna.

**Problems or Additional Vulnerability issues**

During the initial planning process in 2004, the Town of Vienna identified the following problems:

---

The staff analysis found that heavy and repeated rainfalls continued to create the possibility for short term flooding on some sections of town roads, even though the town began a mitigation plan in 2001 to clear and repair road culverts and improve drainage in roadside ditches and public waterways. The most at risk areas have been identified and will be studied for possible additional mitigation improvements.

The vulnerability analysis also found that no large fortified public shelters, such as schools or public buildings, existed within the town at the current time. No such large retail or commercial building also could be identified within the town. The closest such buildings or shelters would be the schools or municipal buildings in the Villages of Waunakee and DeForest. This might indicate the need for a larger and storm protected town municipal building/hall in the future- although it was found that the low tax base and population density would not make such a building financially feasible at the present time without a major government or private grant.

The staff analysis also found that the rapid communication of information to its residents would be difficult, due to the relative lack of density for a large area of the town. The study did indicate, however, that the town maintains an up to date local database with the names, addresses, phone numbers, email addresses, and number of persons living in each dwelling unit within the town. It was also found that the town maintained current email list groups which would allow rapid communications, but only if electrical power remained available.

The most immediate and correctable vulnerability found in the staff analysis, was the need for back-up electrical generation equipment to supply power to town buildings. The analysis concluded that a prolonged power outage would disrupt the essential delivery of public services, such as the town radio communication system, the operation of a central emergency management administration center, the refueling of town vehicles and equipment from town fuel storage tanks.

The Data Collection Guide noted the additional vulnerability issues from the initial planning process:

- Additional areas of flooding from those known or anticipated in 2004.

## **Capability Assessment**

Capabilities are the programs and policies currently in use to reduce hazard impacts or that could be used to implement hazard mitigation activities. This capabilities assessment summarizes regulatory mitigation capabilities, administrative and technical mitigation capabilities, and fiscal mitigation capabilities for the Town of Vienna.

### **Mitigation Capabilities Summary**

Table 11 lists planning and land management tools typically used by local jurisdictions to implement hazard mitigation activities, or by themselves contribute to reducing hazard losses. The table also indicates which of these tools are currently utilized in the Town of Vienna.

**Table 11 Town of Vienna Regulatory Mitigation Capabilities**

Regulatory Tool (ordinances, codes, plans)	Yes/No	Comments
General or Comprehensive plan	Yes	
Zoning ordinance	No	Dane County & Village of DeForest have the zoning authority within the Town of Vienna
Subdivision ordinance	Yes	
Growth management ordinance		
Floodplain ordinance	No	State DNR & Dane County
Other special purpose ordinance (stormwater, steep slope, wildfire)	Yes	Building Codes
Building code	Yes	
Fire department ISO rating		Portions of the town served by three different fire districts
Erosion or sediment control program	Yes	
Stormwater management program	No	
Site plan review requirements	Yes	
Capital improvements plan	No	
Economic development plan	No	
Local emergency operations plan	Yes	
Other special plans	No	
Flood insurance study or other engineering study for streams	No	
Elevation certificates (for floodplain development)	No	

Data Source: Town of Vienna Data Collection Guide

Table 12 identifies the personnel responsible for mitigation and loss prevention activities as well as related data and systems in the Town of Vienna.

**Table 12 Responsible Personnel and Departments for the Town of Vienna**

Personnel Resources	Yes/No	Department/Position	Comments
Planner/engineer with knowledge of land development/land management practices	Yes	Dane County Village of DeForest	
Engineer/professional trained in construction practices related to buildings and/or infrastructure	Yes	Town Engineer	
Planner/engineer/scientist with an understanding of natural hazards	Yes	Town Engineer	
Personnel skilled in GIS	Yes	Town Clerk/Manager	
Full-time Building Official	No		
Floodplain Manager	No		
Emergency Manager	Yes	Dane County/ Town Manager	
Grant Writer	No		

Personnel Resources	Yes/No	Department/Position	Comments
Other Personnel	Yes	Dane County	
GIS Data Resources – (land use, building footprints, etc.)	Yes	Dane County	
GIS Data – Links to assessor's data		Town Clerk/Manager	
Warning systems/services (Reverse 9-11, cable override, outdoor warning signals)	Yes	Dane County	

Data Source: Town of Vienna Data Collection Guide

Table 13 identifies financial tools or resources that the Town of Vienna could potentially use to help fund mitigation activities.

**Table 13 Financial Resources for the Town of Vienna**

Financial Resources	Accessible/Eligible to Use (Yes/No)	Comments
Community Development Block Grants	Yes	
Authority to levy taxes for specific purposes	Yes	
Fees for water, sewer, gas, or electric services	Yes	
Impact fees for new development	Yes	
Incur debt through general obligation bonds	Yes	
Incur debt through special tax bonds	Yes	

Data Source: Town of Vienna Data Collection Guide

## Additional Capabilities

### *National Flood Insurance Program Participation*

The Town of Vienna does not participate in the National Flood Insurance Program as a stand-alone entity, but is covered by the County's participation.

## Public Involvement Activities

During the 2009 update, the community assisted with the public involvement activities referenced in the base plan.

## Mitigation Objectives (Actions)

Objective #1: Establish and foster an informal neighborhood/area scale communications and immediate assistance system directed to special population, single member household, and most at risk community residents, including, but not limited to, the elderly.

### Steps:

- 1) Define and identify a town-wide grid of communication and watch districts.

- 
- 2) Determine persons within grids in need of a special watch or to whom additional information or communications should be relayed in the event of emergencies or natural disasters
  - 3) Develop and determine the type(s) of information to be communicated

Lead Implementing Agency: Town of Vienna

Supporting Agencies:

- Waunakee & DeForest Senior Outreach programs
- Dane County Human Services
- Dane County Emergency Management

Possible Funding and Technical Assistance:

- Town Operational Budget/Town Staff
- FEMA- Hazard Mitigation Grant Program
- FEMA- Pre-disaster Mitigation Grant Program

Time Line for implementation: Begin immediately after plan adoption

Priority: Medium

Estimated Cost: Unknown

2009 Status Report:

The following components are complete:

- Established an email list of residents
- Resident phone # list established
- Town divided into sections for each board member to notify

The Town still must address:

- Procedures and information should be updated
- A test exercise should be scheduled of plan

Objective #2: Inform and educate town residents on the locations of the nearest secure natural hazard or general emergency shelter for various types of possible future emergency events.

Steps:

- 1) Inform residents, and encourage them to locate, the nearest natural and general emergency shelters in the surrounding villages
- 2) Continue to evaluate the need for and financial feasibility of constructing a new central town government building with the size and design for use as a shelter and central

---

administrative site for an expanded list of possible/ likely future natural and general emergencies

- 3) Identify the types of Natural and General emergencies for which the current town hall could/ would serve as the emergency center
- 4) Identify and inform residents of the location of the alternate town emergency center for events of which the current town hall would not be viable for use as an emergency shelter or administrative emergency center

Lead Implementing Agency: Town of Vienna

Supporting Agencies:

- Dane County Emergency Management

Possible Funding and Technical Assistance:

- Local Town Operational Budget
- Dane County Emergency Management
- FEMA- Hazard Mitigation Grant Program
- FEMA- Pre-disaster Mitigation Grant Program

Time Line: Continued Need and Financial Evaluation

Priority: Medium

Estimated Cost: Unknown

2009 Status Report:

The following components are complete:

- Town prepared and adopted a comprehensive emergency management plan- with local hotels agreeing to provide emergency relief role.
- Town completed a facilities plan in 2008, but chose not to address emergency shelter needs immediately, or until needed financial resources could be identified or found.
- Town Hall would serve few emergency needs.

The Town still must address:

- Finding method for sharing town emergency plan with majority of local residents.
- A long-term Town facilities plan which would or could address possible emergency relief and shelter needs.

Objective #3: Eliminate and/ or mitigate the heavy rainfall event short-term flooding/ deposit of field debris and mud on some sections for local town roads. The on going town road improvement and drainage program, which began after the severe 2000 May and June heavy rainfall events have mitigated or eliminated approximately 80% of the identified problem areas.

---

Steps:

- 1) Establish a stakeholder group of experts and citizens.
- 2) Evaluate the relief potential, which may be provided from additional physical changes/improvements (such as increased culvert sizes or ditch grading).
- 3) Identify the agencies and permits, which would be required to perform any such identified physical drainage changes (DNR, Core of Engineers, etc.).
- 4) Identify, inform, and strongly encourage property owners in the flood prone areas of the need for proper field management and field driveway methods which, would reduce the threat and potential of heavy rainfall event flooding.

Lead Implementing Agency: Town of Vienna

Supporting Agencies:

- Dane County Highway Department
- Dane County Land & Water Resources Department - Land Conservation Division

Possible Funding and Technical Assistance:

- Local Operational Budget
- Dane County Highway Department Staff
- Dane County Soils and Conservation Office Staff
- FEMA- Pre-disaster Mitigation Grant Program

Time Line: Ongoing and as problem areas are identified.

Priority: Medium

Estimated Cost: Unknown

2009 Status Report:

The following components are complete:

- Road culvert inventory.
- Identified roads in danger of short-term flooding.

The Town still must address:

- 2008 & 2009 rain events have identified three previously unknown major long term flood areas- which should be identified and added to plan (Objective 6) and mitigation studied.
- Sources of Federal, state, and county assistance need to be found.

Objective #4: Secure and have available adequate back-up electrical power generation for town government buildings in the event of a prolonged electrical power outage due to

---

natural disasters or other possible general causes. Prolonged electrical power outage would seriously disrupt the delivery of essential public services.

Steps:

- 1) Identify the size of electrical generator needed to provide essential temporary electrical power to allow for the provision of continued emergency and necessary governmental services and public system operation.
- 2) Provide for emergency electrical power/ wiring to operate town fuel pumps.
- 3) Cost feasibility study and identification of which budget(s) or agencies responsible for the different needs identified.

Lead Implementing Agencies: Town of Vienna

Supporting Agencies:

- Vienna Utility Districts 1 & 2
- Town of Vienna Utility District Commission

Possible Funding and Technical Assistance:

- Local Operational Budget
- Dane County Emergency Management
- FEMA- Hazard Mitigation Grant Program
- FEMA- Pre-disaster Mitigation Grant Program

Time Line: As soon as funding can be found or allocated.

Priority: Medium

Estimated Cost: Full Cost: \$20,000 - \$40,000 dollars

Shared Cost: \$10,000 - \$20,000 dollars

2009 Status report:

- 1) needs and equipment size identified.
- 2) sewer utility generators purchased and installed.
- 3) small town generator purchased and wiring installed for use.
- 4) Facilities continue to seek funding for larger and full needs generator for the town hall and garage buildings.

Objective #5: Improvements and/or mitigation of the high ground water table in and surrounding the Hamlet of Morrisonville (Town of Windsor). Engineering studies have concluded that drainage improvements in the area surrounding the Morrisonville Hamlet are possible, and that such improvements and/ or mitigation would substantially reduce the

---

high ground water infiltration into the Morrisonville Sanitary District No. 1 sewer system from heavy rainfall events and spring thawing periods. The Morrisonville Sanitary District No. 1 discharges flow through some Town of Vienna Utility District No.1 collection mains and use the Utility No.1 lift pumps prior to entering the Madison Metropolitan Sewer System (MMSD). The past and current high rainfall volumes received from the Morrisonville District create high volume incidents and are likely to cause future low basement flooding to Vienna Utility District No. 1 system users without corrective measures being put in place in the near future. High rainfall events also currently create over capacity issues with the Morrisonville system- and flooding of sewage into some Morrisonville system users' basements.

Steps:

- 1) Identify the most cost effective corrective or mitigation measures to lower the surrounding high water table/ or to prevent an increase in the water table in periods of heavy rainfall events.
- 2) Prepare a corrective or mitigation plan with the assistance of local engineers, Dane County Soils and Conservation Staff, Town of Windsor Officials, and Dane County Emergency Management Staff.
- 3) Identify the permits, which would be required for identified corrective measures and the agencies, which would be responsible for granting the required permits.

Lead Implementing Agencies: Morrisonville Sanitary District No.1

Supporting Agencies:

- Town of Windsor
- Dane County Emergency Management Staff
- Dane County Land & Water Resources Department - Land Conservation Division

Funding and Technical Assistance:

- Dane County Emergency Management Staff
- Town of Windsor & Town of Vienna Staff
- Dane County Soils and Conservation Office Staff
- FEMA- Hazard Mitigation Grant Program
- FEMA- Pre-disaster Mitigation Grant Program

Time Line: Begin immediately after plan adoption.

Priority: High

Estimated Cost: Unknown

2009 Status report:

The Morrisonville Hamlet drainage channel has been cleaned out for better long term drainage and the Morrisonville sewer line study has been completed. Corrective measures and necessary sewer line improvements are still needed. It is still uncertain how much improvement will result after drainage channel was cleaned recently. This project should

---

not be removed until results suggest the concern has improved or been mitigated. The County is proposing to assist with this project using CDBG funding made available from the 2008 flood disaster.

Objective #6: Complete a more detailed "Vulnerability to Flood" analysis. Vienna has experienced major flooding and long term road closing due to sustained high-water in 2009.

Steps:

1) A new "Vulnerability to Flood" Section needs to be prepared and added to Vienna's plan.

Lead Implementing Agencies: Town of Vienna

Supporting Agencies:

- FEMA
- Dane County Emergency Management Staff
- Dane County Land Conservation Dept.

Funding and Technical Assistance:

- Dane County Emergency Management Staff
- Town of Vienna Staff
- Dane County Soils and Conservation Office Staff
- FEMA- Hazard Mitigation Grant Program
- FEMA- Pre-disaster Mitigation Grant Program

Time Line: Begin immediately after plan adoption.

Priority: High

Estimated Cost: \$500,000.

Objective #7: Stormwater/Flood relief channel.

Steps:

- 1) Identify relief channel route.
- 2) Study impacted wetlands, delineate wetlands downstream structures.
- 3) Identify waterway easement legal descriptions.
- 4) Seek grants or funding options.
- 5) Purchase easement and construct relief channel.

Lead Implementing Agency:

- Town of Vienna

- 
- Drainage District #29

Supporting Agencies:

- Dane County Water Resources

Possible Funding and Technical Assistance:

- FEMA
- DNR
- Army Corp of Engineers

Timeline: 1-2 years.

Priority: High

Estimated Costs: \$500,000

Objective #8: Long term flood relief mitigate plan for portions of Town of Vienna sections 15, 16, 21, 22, 23, & 26.

Steps:

- 1) Seek grants or funding sources to study and identify mitigation solutions to for long term relief of flooding.
- 2) Explore and/or create a water management district.
- 3) Seek public and private participation into mitigation planning process.
- 4) Seek grants or funding sources for the purchase of public waterway channel land.
- 5) Purchase necessary waterway lands.
- 6) Construct defined waterway channel and required control structures.

Lead Implementing Agency:

- Town of Vienna
- Dane County

Supporting Agencies:

- Dane County
- State of Wisconsin
- US Fish & Wildlife

Possible Funding and Technical Assistance:

- FEMA
- DNR

- 
- Dane County Water Resources
  - Army Corp of Engineers

Timeline: As soon as funding sources can be identified.

Priority: High

Estimated Costs: \$350,000

Objective #9: Relieve or provide planned storage for storm water for private properties adjacent to Interstate Highway I90/94 & 39 in Town of Vienna sections 3, 11, & 14 which are flooded due to additional lanes being constructed for the Interstate Highway, without additional storm water storage capacity planning .

Steps:

- 1) Seek a grant or source of funding to identify specific causes for the increasing amount of water flooding lands adjacent to the Interstate Highway.
- 2) Identify relief or mediation solutions to drain or provide for long term storage of storm water run-off flows from the Interstate Highway.
- 3) Seek grants or sources of funding to mitigate the storm water flooding in sections 3, 11, & 14 of the Town of Vienna adjacent to Interstate Highway I90/94 & 39.
- 4) Construct necessary drainage channel or purchase property for planned long term storage of Interstate Highway run-off water.

Lead Implementing Agency: Town of Vienna

Supporting Agencies:

- Dane County
- State of Wisconsin
- US Fish & Wildlife

Possible Funding and Technical Assistance:

- US Army Corp of Engineers
- Wisconsin DNR
- FEMA
- Dane County Water Resources

Timeline: As soon as funding sources are located.

Priority: Medium to High

Estimated Costs: \$ 250,000