



210 Martin Luther King Jr. Blvd. Room 362 Madison, WI 53703 Phone: 608-266-4137 Fax: 608-266-9117 www.CapitalAreaRPC.org info@CapitalAreaRPC.org

February 10, 2009

NOTICE OF PUBLIC HEARING March 12, 2009

Amending the *Dane County Land Use and Transportation Plan* and the *Dane County Water Quality Plan* by Revising the Central Urban Service Area Boundary and Environmental Corridors in the City of Madison and the Town of Burke

The Capital Area Regional Planning Commission will hold a public hearing on March 12, 2009 at 7:00 p.m. in Room 315 of the City-County Building, 210 Martin Luther King, Jr. Blvd., Madison, Wisconsin, to take testimony concerning amendments to the *Dane County Land Use and Transportation Plan* and the *Dane County Water Quality Plan* to revise the Central Urban Service Area boundary and environmental corridors, as requested by the City of Madison. The amendment proposes to add 519.5 acres to the central urban service area, east of Interstate Highway 39/90/94 and south of Anderson Road, in the City of Madison and the Town of Burke. The portion of the amendment area currently in the Town of Burke (approximately 155 acres) is included in the City of Madison's Boundary Adjustment Area in the *Town of Burke and City of Madison Cooperative Plan*.

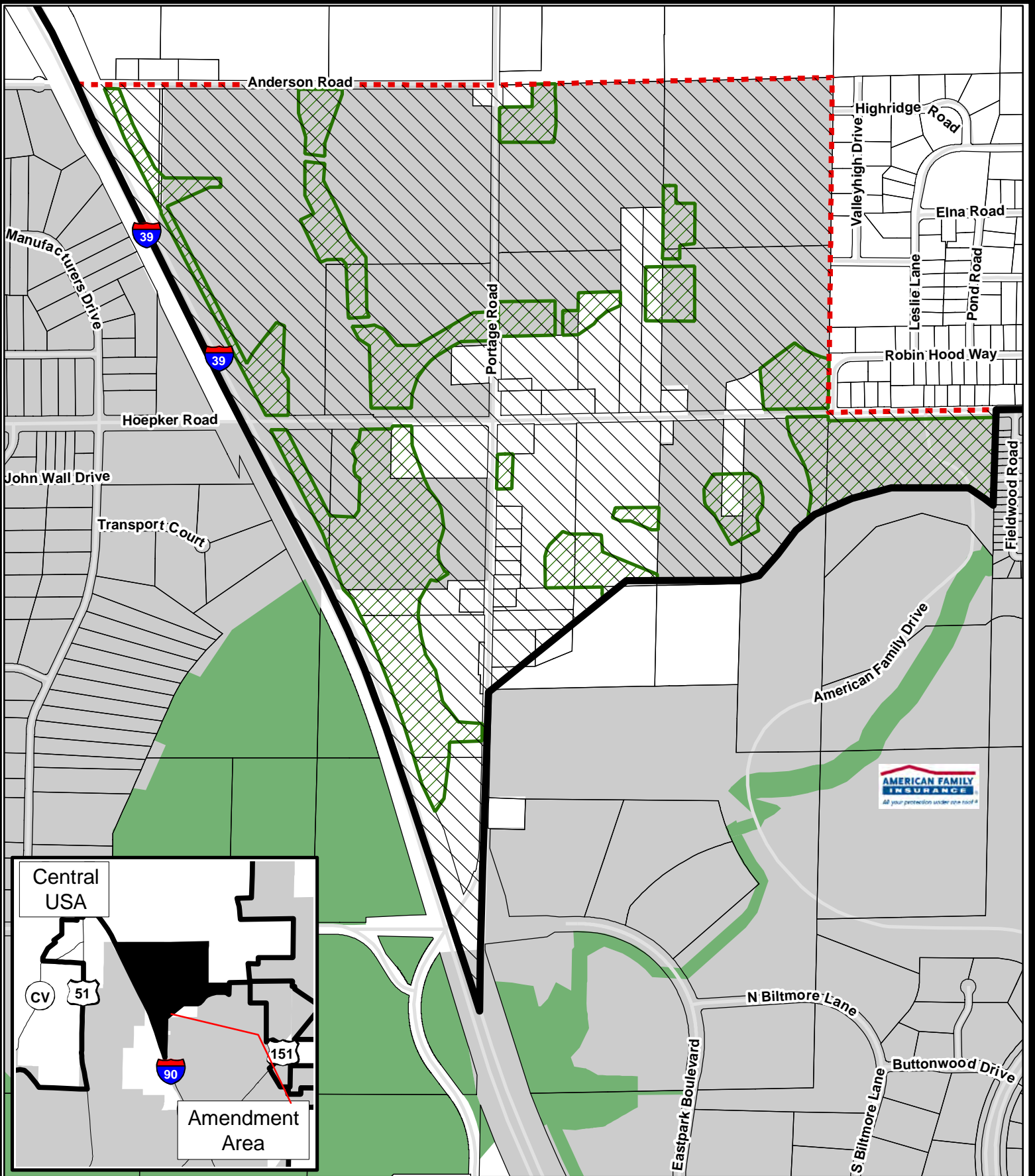
The amendment area, approximately one-quarter of the Pumpkin Hollow Neighborhood planning area, includes 96.7 acres of existing development including 28 residences, a commercial business, a golf driving range (to be partially redeveloped), the Burke Lutheran Church and cemetery, and 50.8 acres of street right-of-way. The proposed plan for the area calls for 236.6 acres of residential development with a variety of housing types and densities estimated to include 1,964 housing units accommodating an estimated population of 4,545 persons, including 521 school aged children. The plan also includes 25.9 acres of commercial/industrial development, 7.2 acres of institutional development, and 133.3 acres of street right-of-way. The amendment request proposes 113.4 acres of environmental corridors (including 3.0 acres previously in developed land uses).

The proposed amendment (shown on the attached map) would result in a net addition of 312.4 developable acres to the Central Urban Service Area. The amendment area is located in the Starkweather Creek Watershed.

Further information on the proposal may be obtained from Barbara Weber at 266-9113. The City of Madison submittal is available on the CARPC website www.CapitalAreaRPC.org. The Staff Analysis Report will be available on the CARPC website by Friday, March 6, 2009.

Attachment

Mailed to: David J. Cieslewicz, Mayor, City of Madison
Brad Murphy, Director, Madison Planning Unit
Kevin Viney, Chair, Town of Burke
Lois Ford, Deputy Clerk, Town of Burke
Kathleen Falk, Dane County Executive
Dorothy Wheeler, County Supervisor, District 18
David Wiganowsky, County Supervisor, District 21
Todd Violante, Director, Dane County Planning & Development
Susan Jones, Coordinator, Dane County Lakes and Watershed Commission
Kevin Connors, Dane County Land Conservation Dept.
Jon Schellpfeffer, Chief Engineer and Director, MMSD
Lisa Helmuth, WDNR Bureau of Watershed Management
Tom Gilbert, WDNR Bureau of Watershed Management
Ken Johnson, WDNR South Central Region
Sue Josheff, WDNR South Central Region
Dan Heim, WDNR South Central Region
Jon Bales, Superintendent, DeForest Area School District
John Broihahn, State Historical Society



Map 1
Amendment to the
Central Urban Service
Area in the
City of Madison and
the Town of Burke

- Existing Urban Service Area Boundary
- Service Area to be Added (519.5 acres)
- Environmental Corridor to be Added (116.5 acres)
- Parcels
- Proposed Urban Service Area Boundary
- Existing Environmental Corridor
- Incorporated Area

3 Feb. 2009

0 1000
Feet

Prepared by staff
of the CARPC.