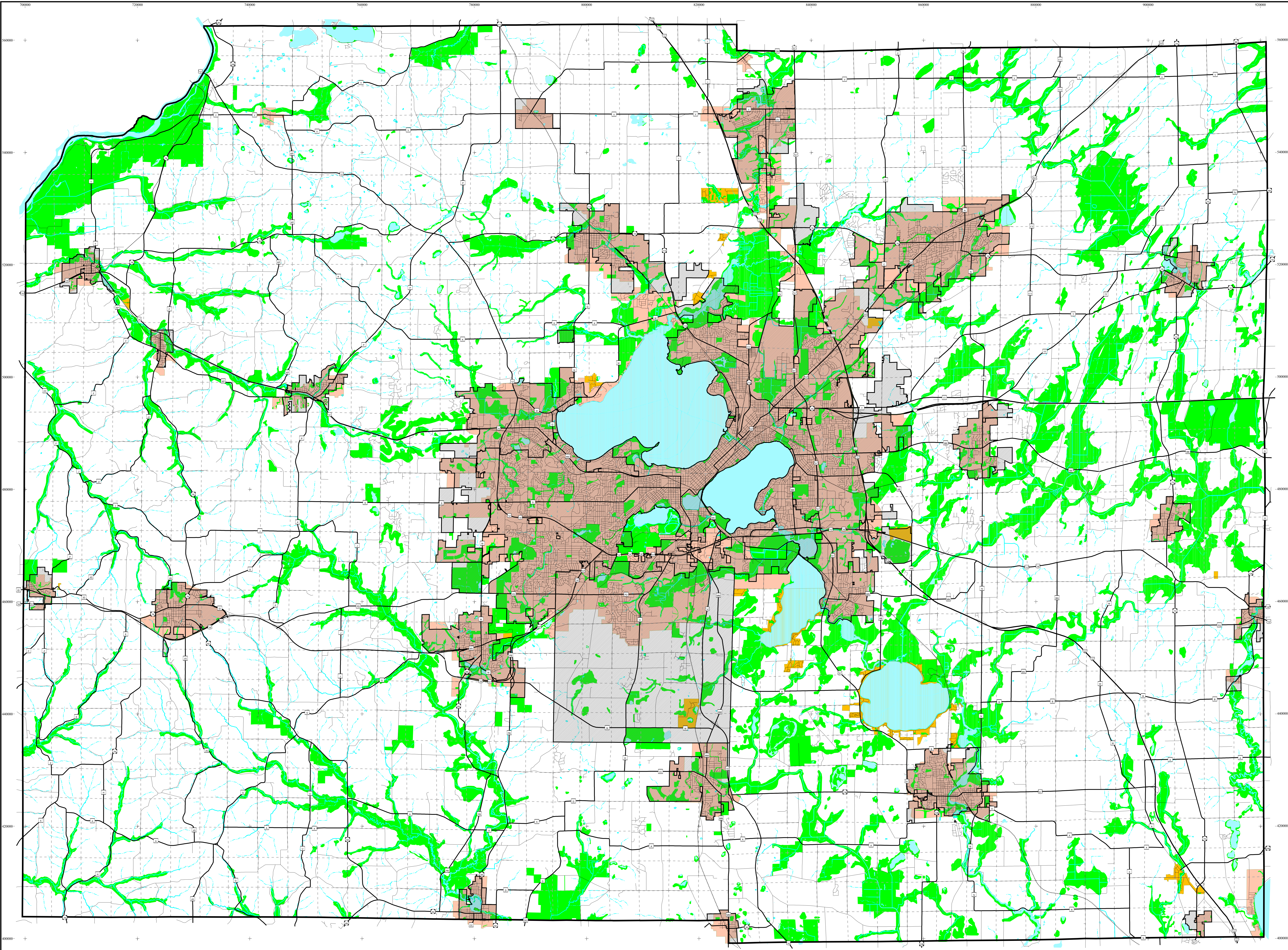


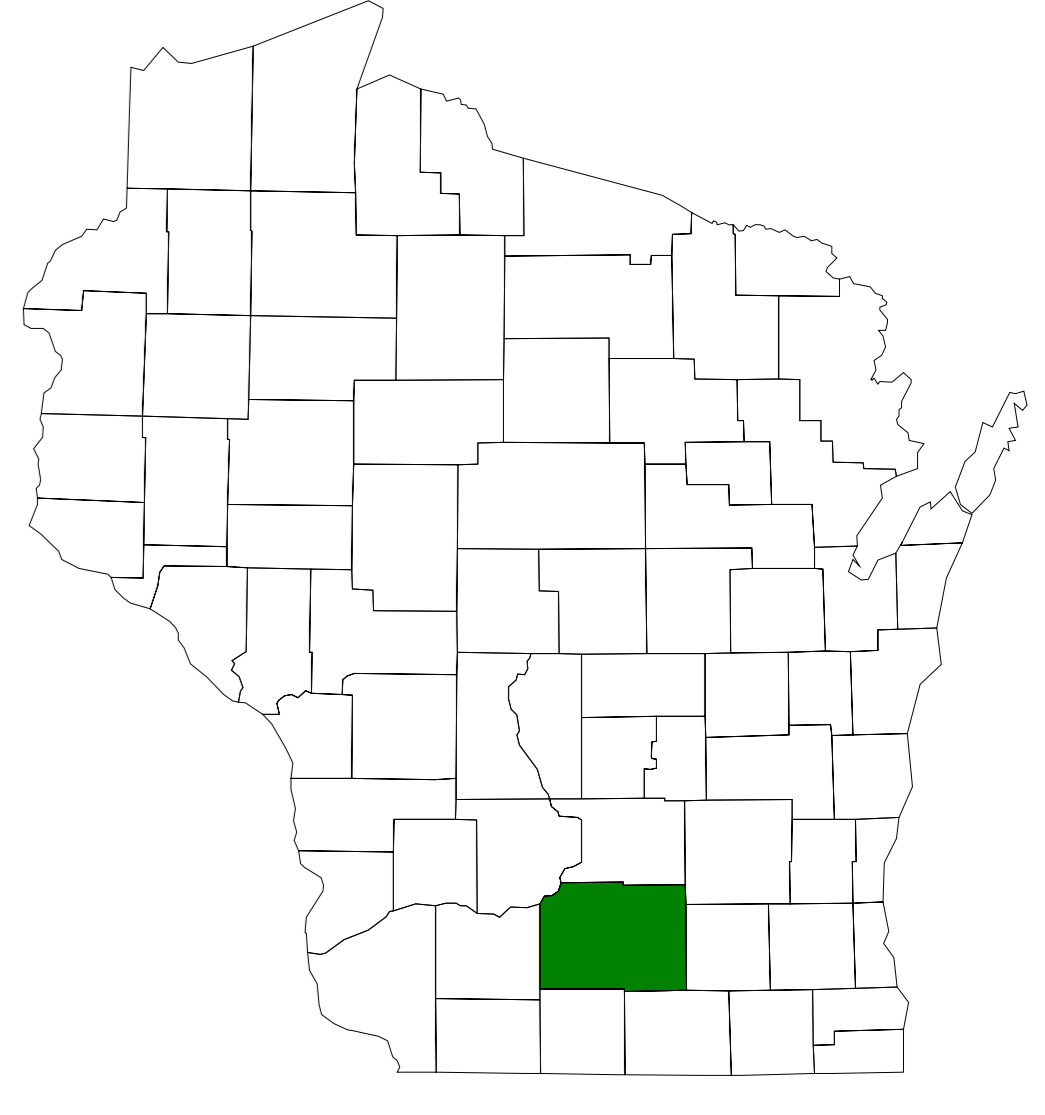
Regional Development Plan Map



- Urban Service Area
- Limited Service Area

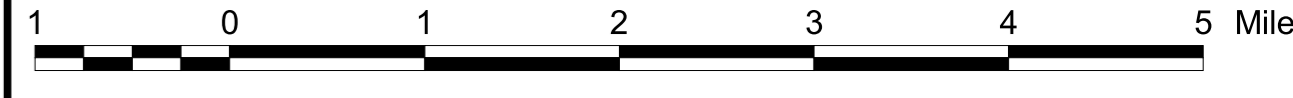
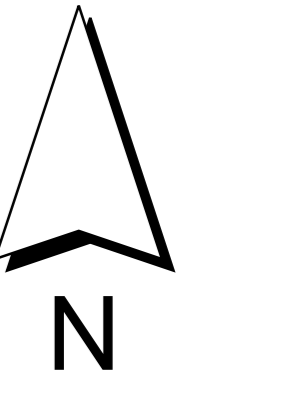
- Open Space Corridors
- Open Water
- Rural Area
- Incorporated Area

Note to User:
 This map is a general representation of the adopted Urban Service Areas and Open Space Corridors effective the date indicated. The map user should consult the official detailed up-to-date maps maintained by the RPC for specific interpretation of these delineations.



The Dane County
Regional Planning Commission

September, 2004



1:62,500

Lambert Conformal Conic Projection
 20,000 Foot Grid based on
 Dane County Coordinate System - NAD 83(91)

Map Created by DCRPC, 5/2002.
 Source Info:
 Urban/Limited Service Areas: 6804, Environmental Corridor Maps (DCRPC);
 Open Space Corridors: 6804, Environmental Corridor Maps and Town Plan Maps (DCRPC);
 Civil Division Limits: 6804, Assessment Records (DCRPC);
 Street Data: 495, Orthophoto Derived (DCLIC);
 Hydrography: 1206, 1:24500 (WIDNR)