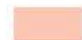



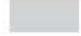

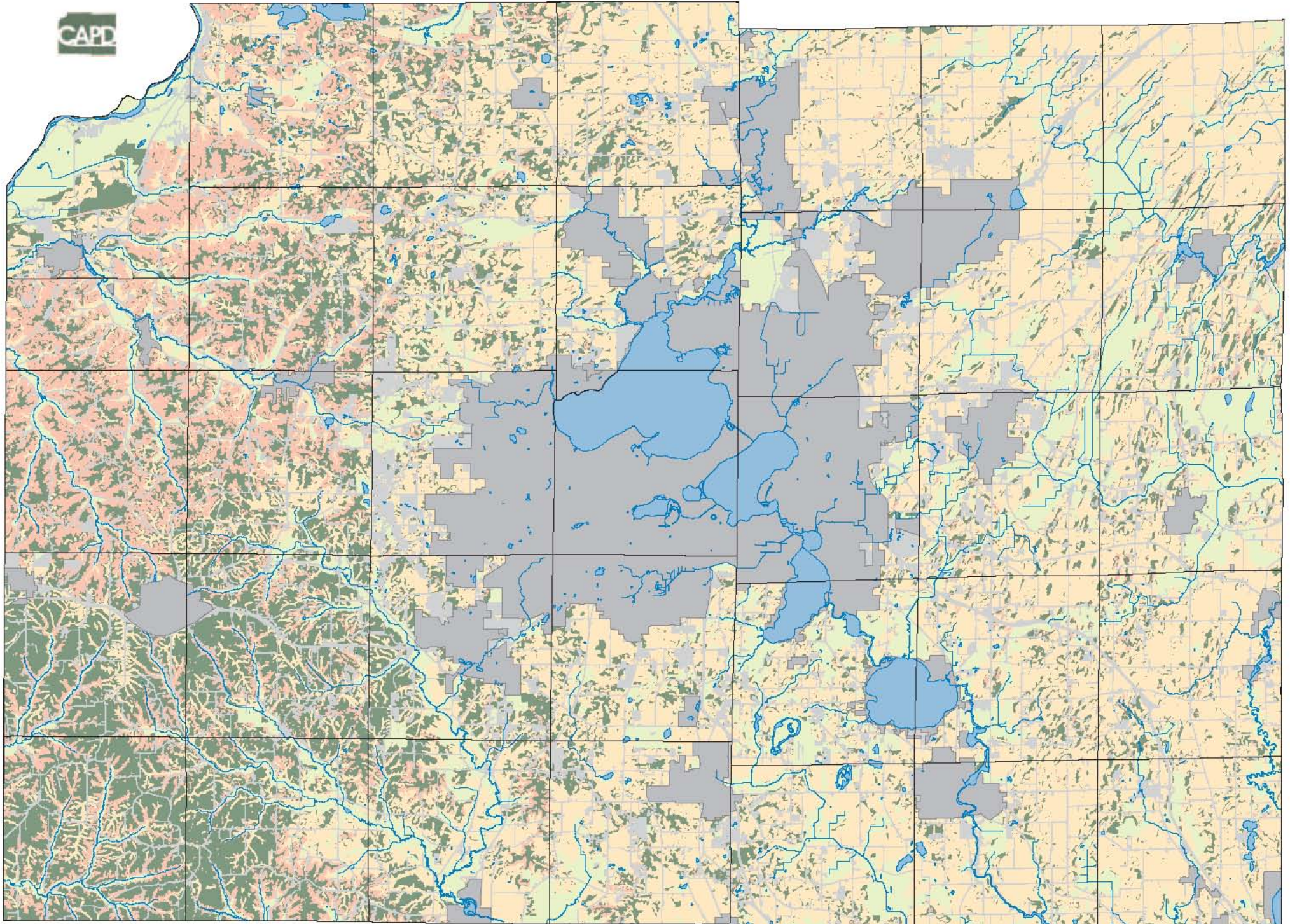


Development Constraints on Rural Lands

-  Slopes Greater Than 20%
-  Prime Farmland
-  Urban Service Area
-  RPC Open Space
-  Developed Lands (2000)
-  Other Undeveloped Lands



For the purpose of this map other undeveloped lands are those lands that are within Dane County but are not considered as open space, are not slopes greater than or equal to 20%, do not have prime farmland underlying them, are not within a service area and are not already developed (2000).

Created by the Dane County Community
Analysis and Planning Division
March 2005

Urban Service Area: CAP 2005005 Hydrology: LUD 1995
Prime Farmland: NRCS 1984 Developed Lands: RPC 2000
Slopes Greater Than 20%: RPC 1995
RPC Open Space: CAP 2005