

North Mendota FUDA Public Participation

Values and Preferences



North Mendota FUDA Area

Public
Involvement
:
Phase 1

Overview of Tonight

- Introduction and Overview of FUDA Process
- Affirmation of Community Goals
- Visual Preference Survey
- Break
- Group Discussion
- Wrap-up and Report Back
- Next Steps
- Adjourn



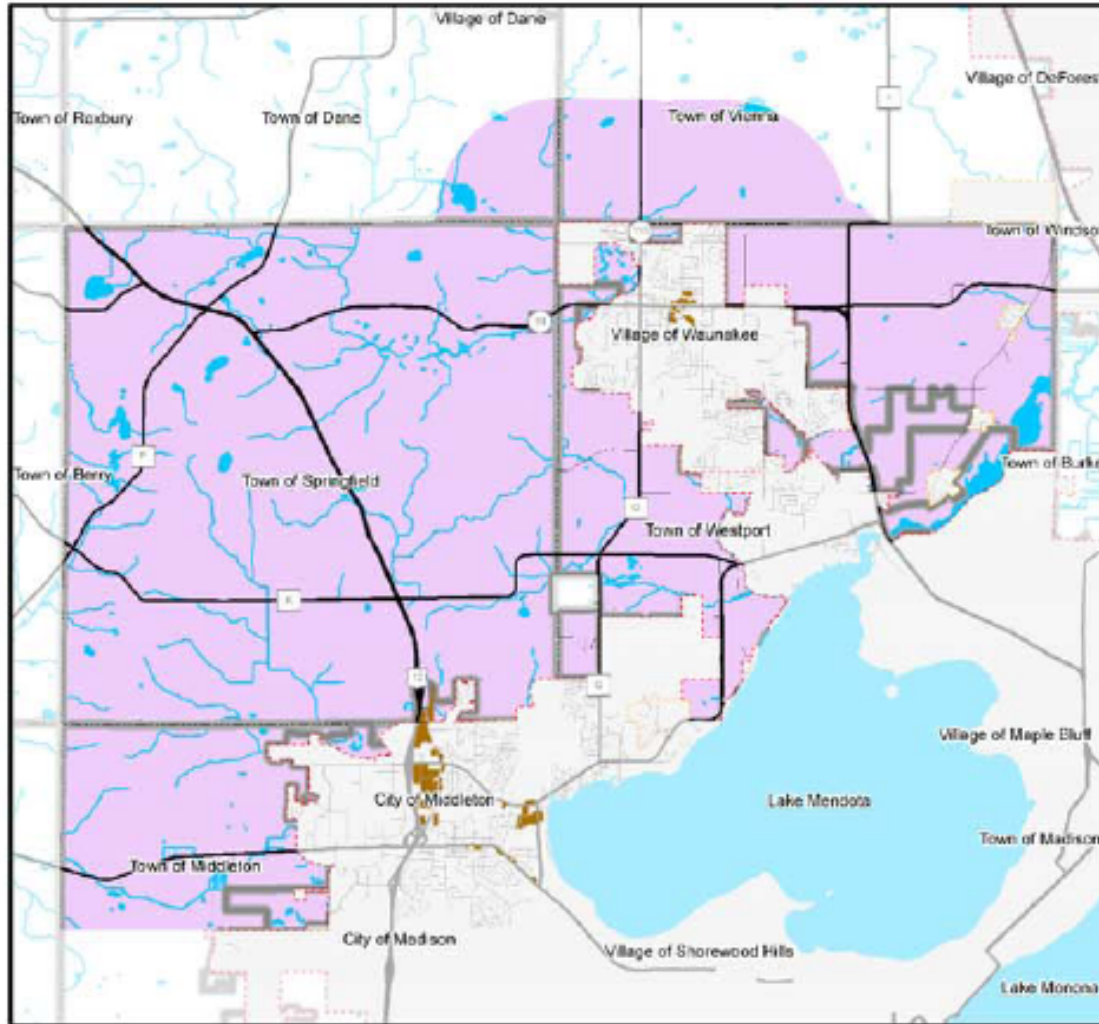
Future Urban Development Area (FUDA) Planning

Purpose: to protect vital natural resources, promote efficient development, and preserve farmland through cooperative planning for long-term growth



North Mendota FUDA Area

Future Urban Development Area (FUDA) Planning



North Mendota FUDA Area



Future Urban Development Area (FUDA) Planning

- Focus on URBAN growth
- Urban = served by sewer and water and other public services
- Rural = unsewered developments
- CAPRC designates Urban Service Areas
- CARPC founding resolution



Future Urban Development Area (FUDA) Planning

- Guided by local steering committee representing Middleton, Waunakee, Westport and Springfield
- Westport, Burke, Madison and Sun Prairie are kept informed of planning meetings
- Part of a regional effort to develop FUDA plans throughout the county
 - DeForest, Windsor and Vienna also preparing joint FUDA plan.

FUDA Application

- To amend or update local comprehensive plans
- CARPC review of Urban Service Area amendments, and when updating regional plans



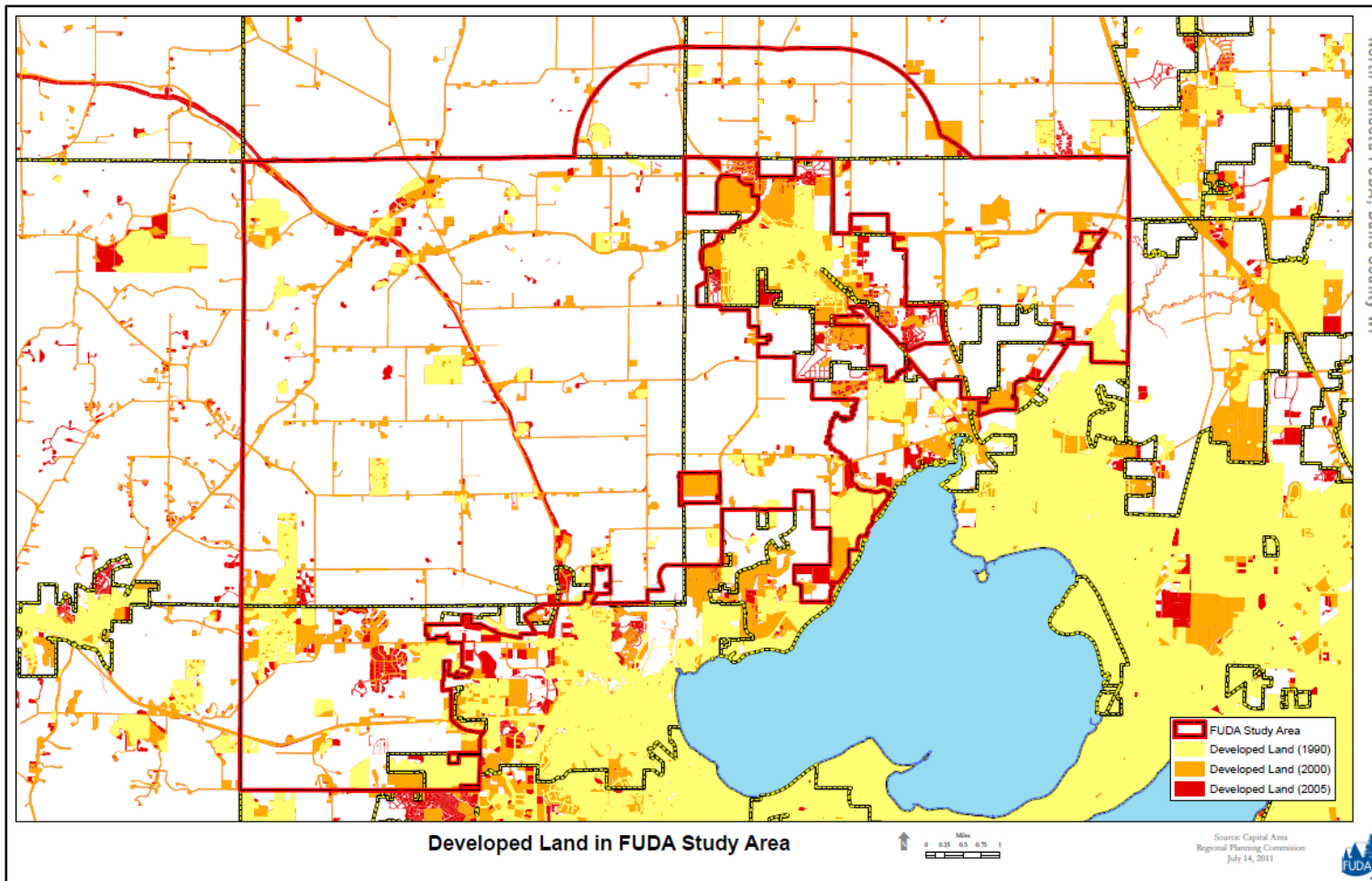
FUDA Process

- Steering Committee
- Existing Condition Report
 - Natural resources
 - Agriculture
 - Land demand and supply
- Scenario Planning
 - **Community Goal and Visual Preference Surveys**
 - Scenario workshops
 - Preferred scenario(s)
- FUDA Plan
- Comprehensive Plans, USA amendments, Regional Plans



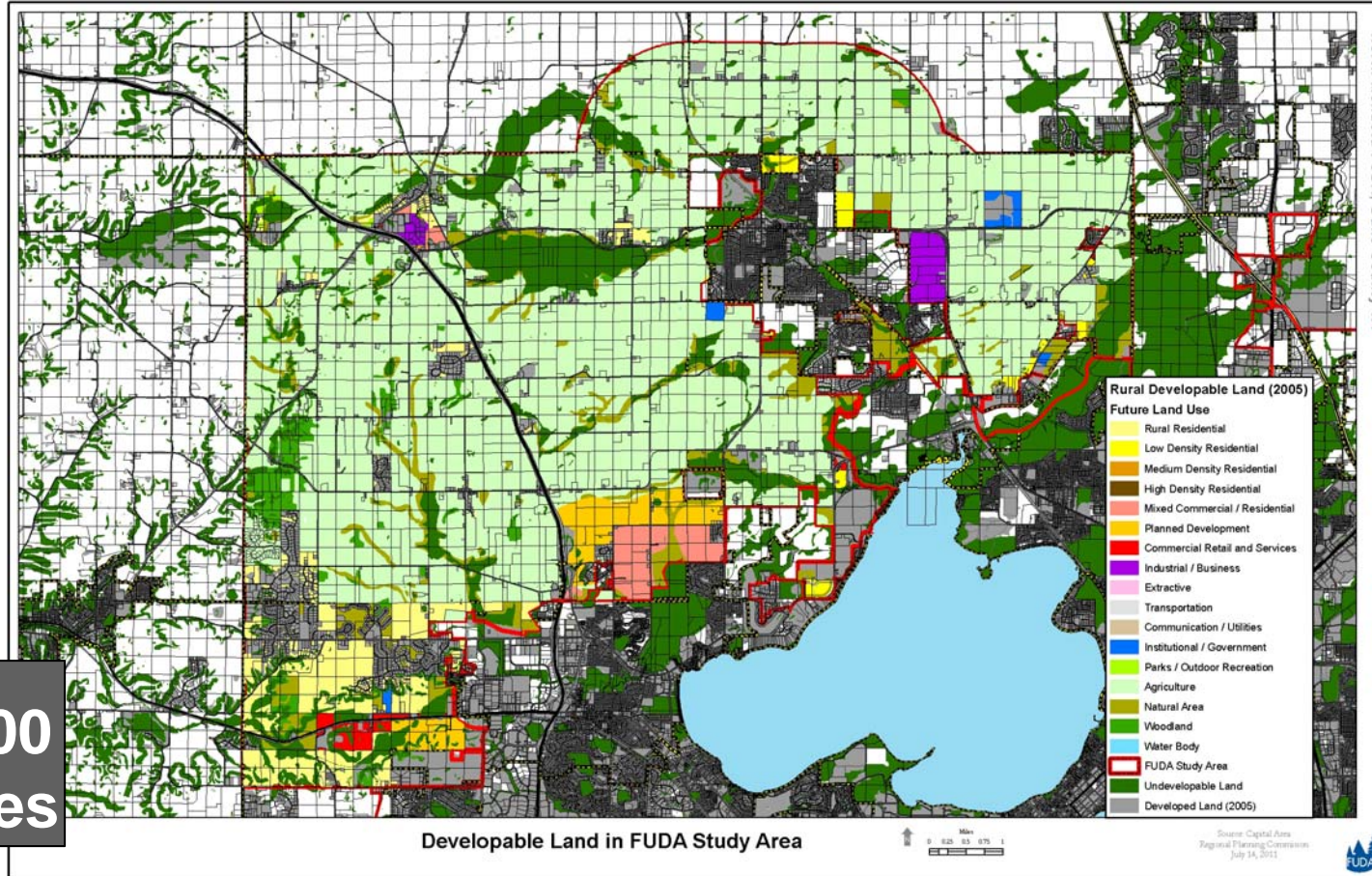
Why We're Here

- Total developed area in the North Mendota communities has double since 1980



Why We're Here

- Based on population projections, over 7200 new housing units are projected to be developed in urban areas by 2035



North Mendota FUDA Area

What is Next?

The next step is to take an online survey

Go to the [survey](#)

