



July 13, 2010

NOTICE OF PUBLIC HEARING

August 12, 2010

Amending the *Dane County Land Use and Transportation Plan* and the *Dane County Water Quality Plan* by Revising the Rodefeld Limited Service Area Boundary and Environmental Corridors in the City of Madison and the Town of Blooming Grove

The Capital Area Regional Planning Commission will hold a public hearing on August 12, 2010 at 7:00 p.m. in Room 315 of the City-County Building, 210 Martin Luther King, Jr. Blvd., Madison, Wisconsin, to take testimony concerning amendments to the *Dane County Land Use and Transportation Plan* and the *Dane County Water Quality Plan* to revise the Rodefeld Limited Service Area boundary and environmental corridors, as requested by the City of Madison. The proposed amendment adds 40.7 acres to the Rodefeld Landfill Limited Service Area, located north of Highway 12/18, east of Interstate Highway 39/90 in the City of Madison (38.6 acres) and the Town of Blooming Grove (2.1 acres).

The amendment area includes 15.0 acres of existing development including 6.7 acres associated with the landfill operation, 4.4 acres of right-of-way on the site, and 3.9 acres of Highway 12/18 right-of-way. Environmental corridors are proposed for stormwater facilities on 1.2 acres and 19.0 acres of wetland and open space. The LSA expansion is proposed to accommodate a new 26,276 square-foot Waste Transfer Station/Household Hazardous Waste building at the landfill site. The amendment adds 5.5 developable acres.

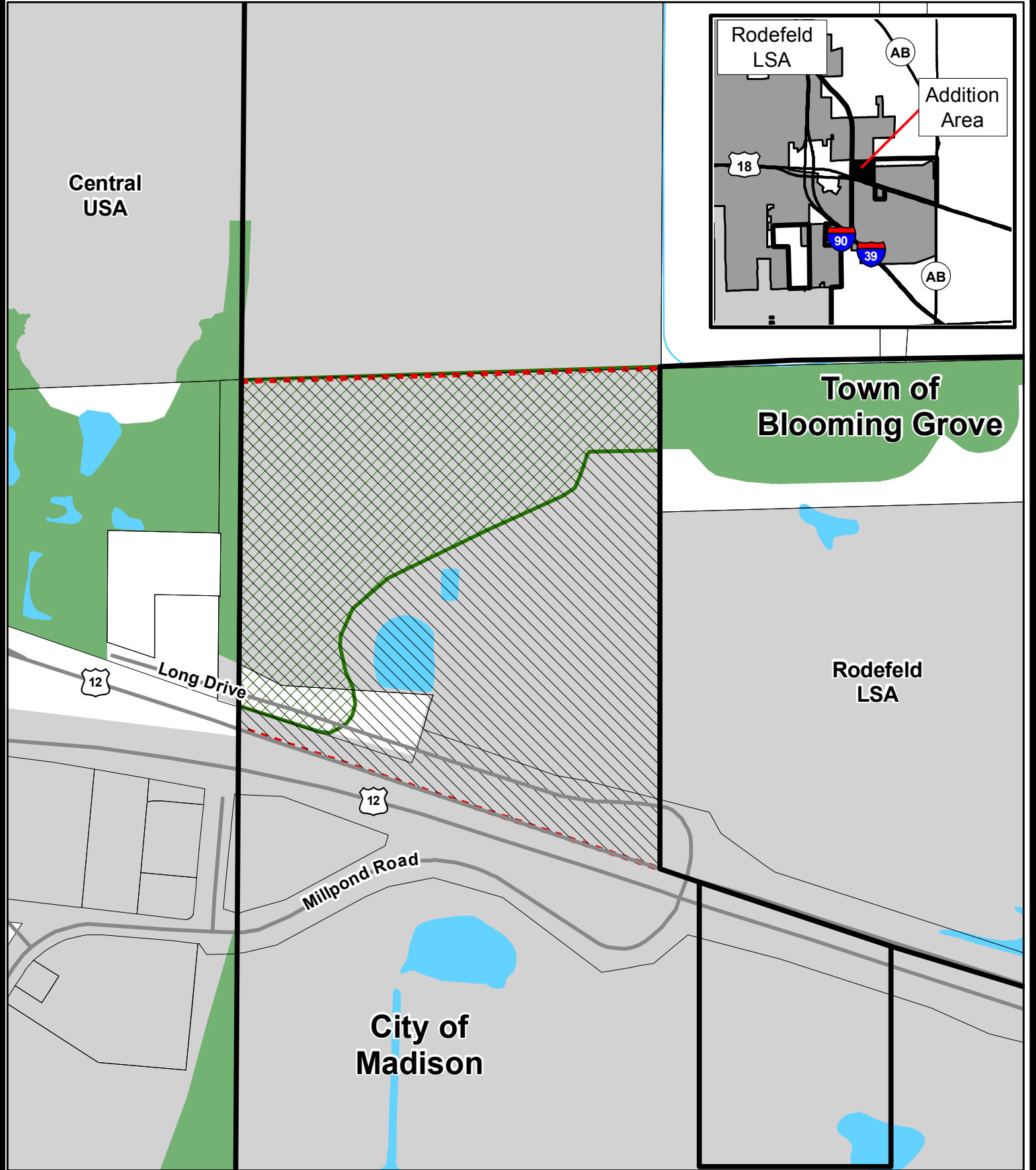
The proposal also requests that CARPC buffer criteria for environmental corridor delineation be waived to allow encroachment into the 75-foot vegetative buffer required by the Dane County Water Quality Plan. The remaining buffer will be 41 feet from the delineated wetland.

The existing development within the proposed amendment area includes a scale house and an electric generation building that have been erroneously served by the City of Madison sewers since construction in 1994 even though they are not in the Limited Service Area. This amendment will bring the currently served buildings into the service area as well as providing for the new facility.







Further information on the proposal may be obtained from Barbara Weber at 266-9113. The City of Madison submittal is available on the CARPC website www.CapitalAreaRPC.org. The application submission and Staff Analysis Report are available on the CARPC website.

Attachment

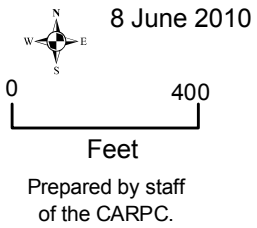
Mailed to: David J. Cieslewicz, Mayor, City of Madison
Brad Murphy, Director, Madison Planning Unit
Dwight Johnson, Chair, Town of Blooming Grove
Michael Wolf, Administrator/Clerk/Treasurer, Town of Blooming Grove
Kathleen Falk, Dane County Executive
Dave DeFelice, County Supervisor, District 16
Todd Violante, Director, Dane County Planning & Development
Susan Jones, Coordinator, Dane County Lakes and Watershed Commission
Kevin Connors, Dane County Land Conservation Dept.
Jon Schellpfeffer, Chief Engineer and Director, MMSD
Lisa Helmuth, WDNR Bureau of Watershed Management
Tom Gilbert, WDNR Bureau of Watershed Management
Ken Johnson, WDNR South Central Region
Sue Josheff, WDNR South Central Region
Dan Heim, WDNR South Central Region
John Broihahn, State Historical Society
Bill Schaefer, Madison Area Metropolitan Planning Organization



Map 1
Amendment to the Rodefeld Limited Service Area and Environmental Corridors in the City of Madison and Town of Blooming Grove

-  Service Area to be added (40.7 acres)
-  Proposed Environmental Corridor (19.0 acres)
-  Existing Environmental Corridor
-  Incorporated Area
-  Existing Service Area Boundary
-  Proposed Limited Service Area Boundary

8 June 2010



0 400
 Feet

Prepared by staff of the CARPC.