

Noise Abatement Subcommittee

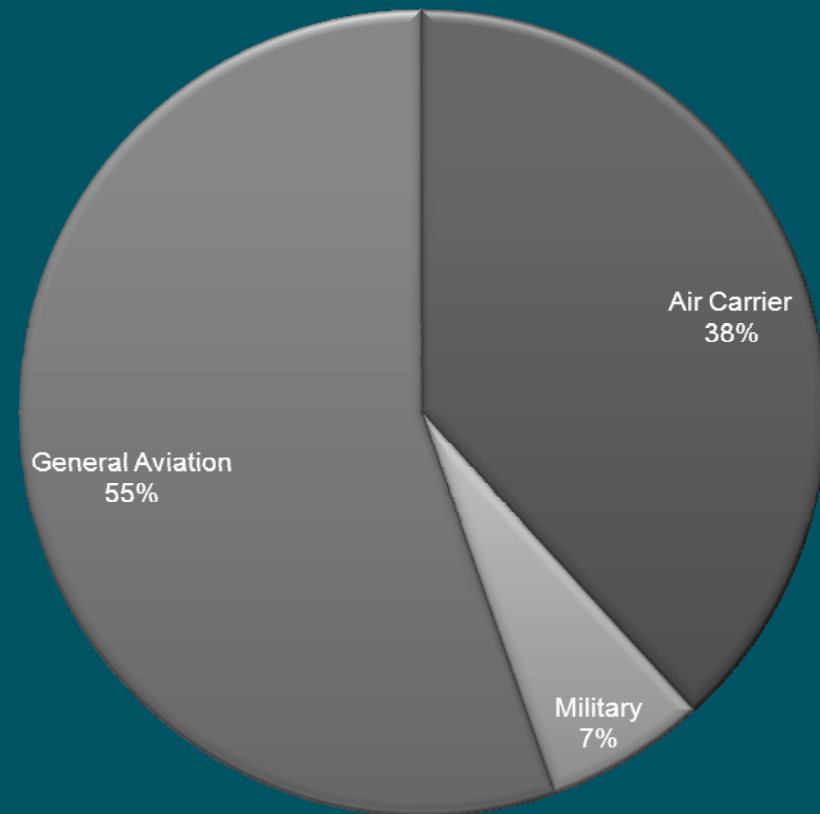
Review of Noise Complaint Activity

NOVEMBER 2011
Madison, Wisconsin



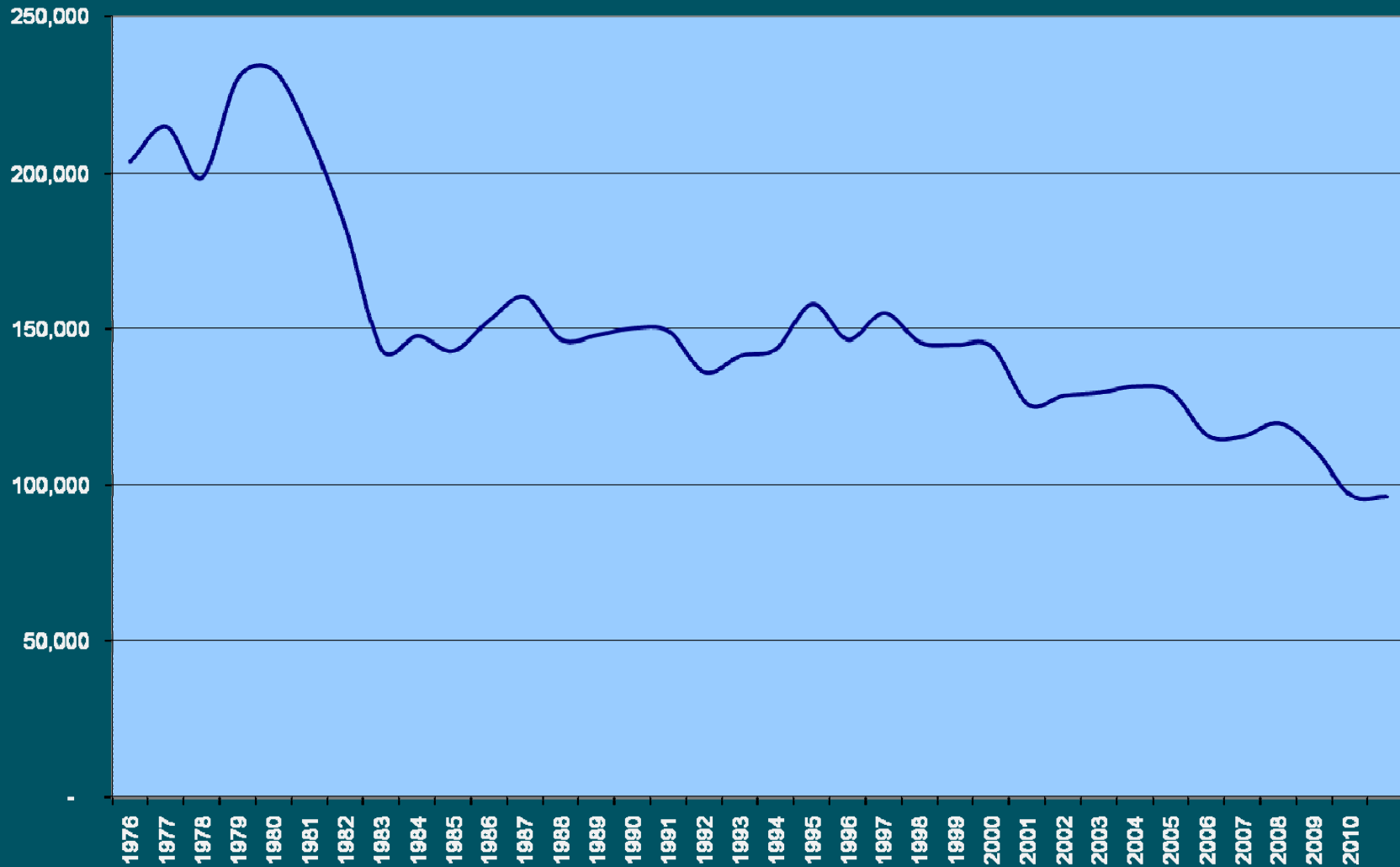
AIRCRAFT MOVEMENTS

Aircraft Movements	APR 11- SEP 11	APR 10 - SEP 10	Change
<i>Air Carrier</i>	16,763	16,041	4.5%
<i>Military</i>	2,822	5,030	-43.9%
<i>General Aviation</i>	24,292	30,123	-19.4%
Total Movements	43,877	51,194	-14.3%

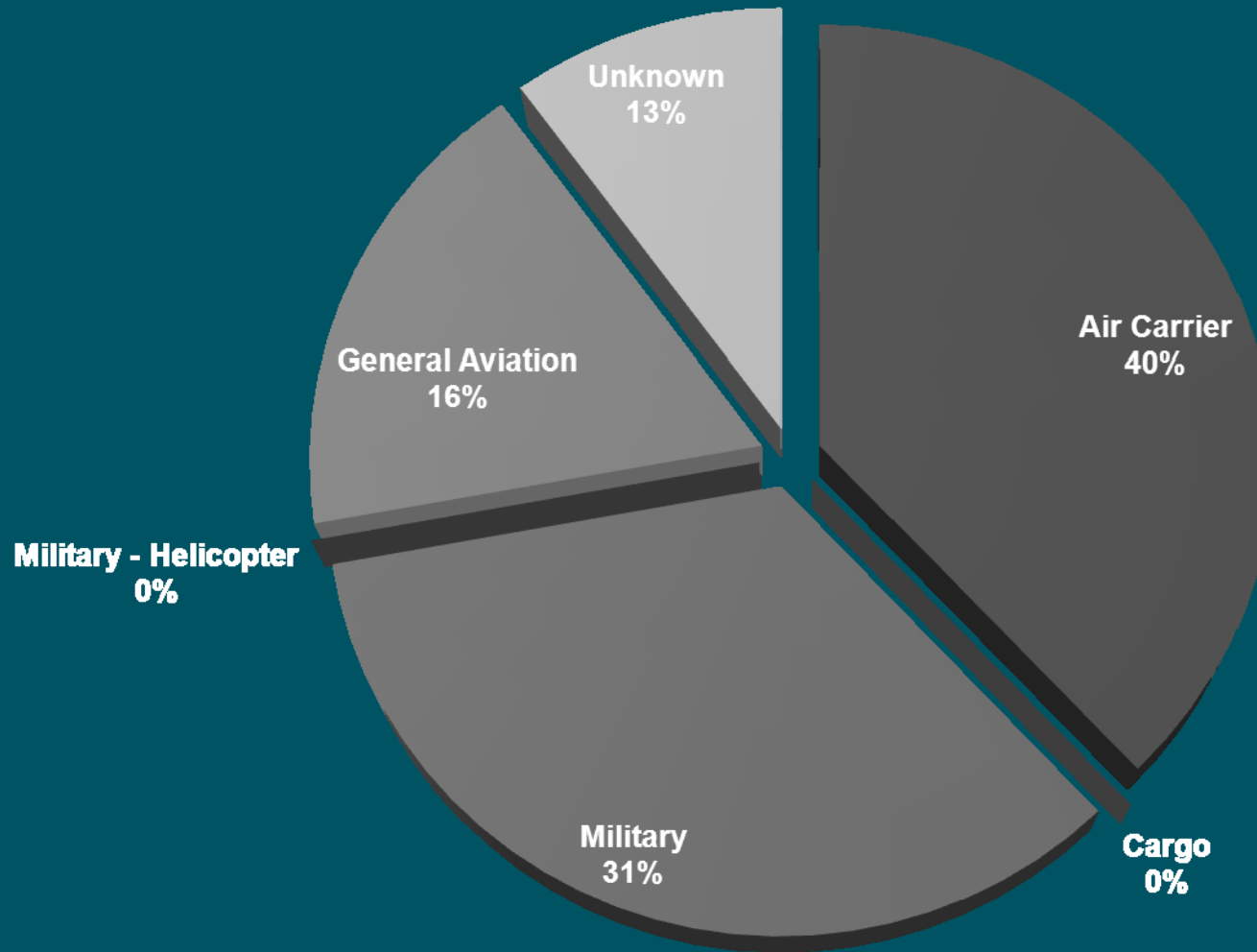


Aircraft Operations

Historical Total Aircraft Operations, DCRA



COMPLAINTS BY AIRCRAFT TYPE

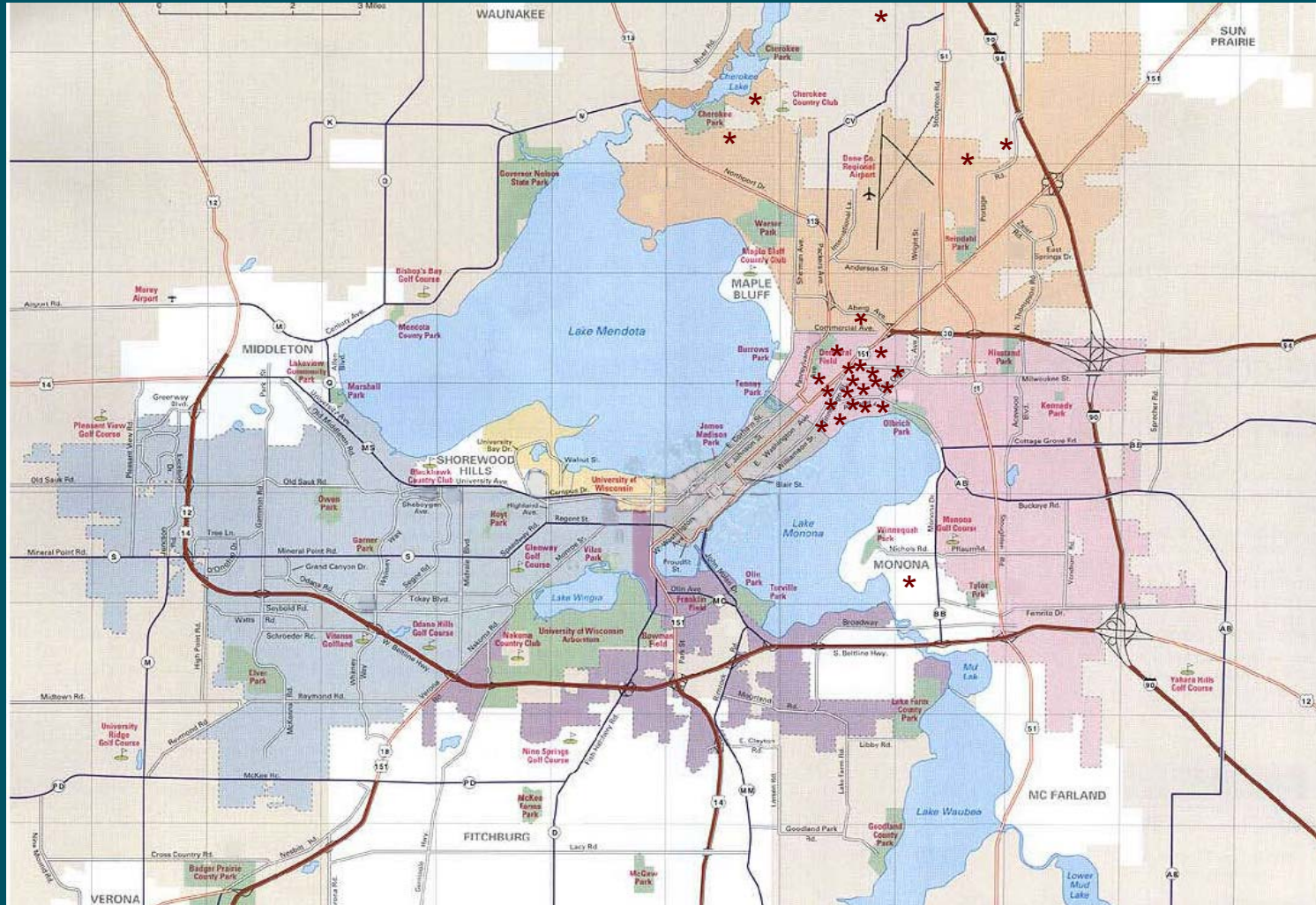


COMPLAINTS BY AREA

Area	APR 11- SEP 11		APR 10 - SEP 10	
	Complaints	Callers	Complaints	Callers
<i>Blooming Grove</i>	0	0	0	0
<i>Burke</i>	0	0	0	0
<i>Cottage Grove</i>	0	0	0	0
<i>DeForest</i>	2	1	0	0
<i>Fitchburg</i>	0	0	1	1
<i>Madison</i>	83	30	120	56
<i>McFarland</i>	0	0	0	0
<i>Middleton</i>	0	0	0	0
<i>Monona</i>	1	1	1	1
<i>Stoughton</i>	0	0	0	0
<i>Windsor</i>	0	0	0	0
<i>Verona</i>	0	0	0	0
<i>Waunakee</i>	0	0	0	0
Total	86	32	122	58



COMPLAINT LOCATION



REPEAT CALLERS

AREA	NUMBER OF CALLS
MADISON	83 (30 CALLERS)

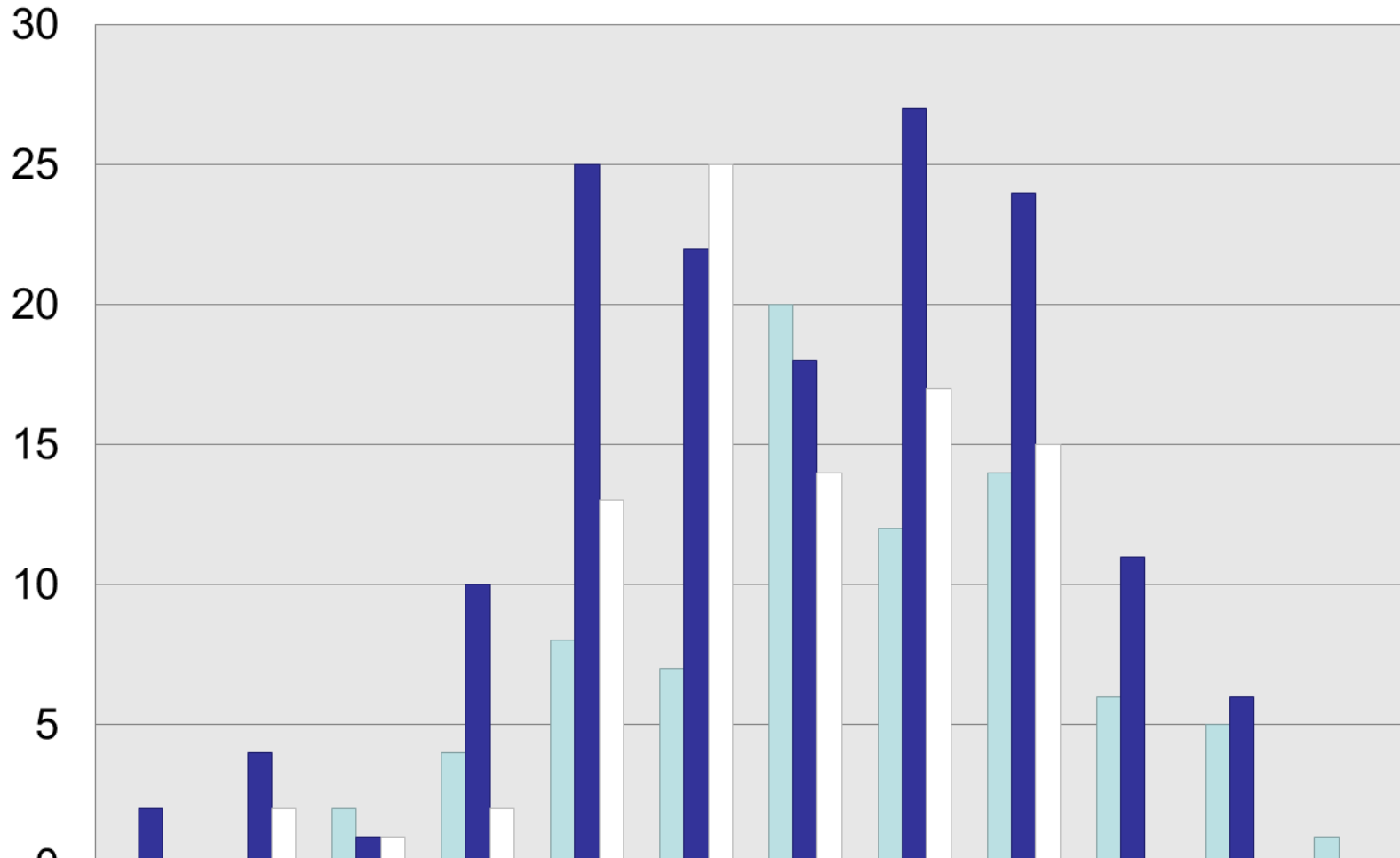


NOISE COMPLAINT CALLS

	APR	MAY	JUN	JUL	AUG	SEP	TOTAL
DAY	2	5	25	14	16	15	77
NIGHT		8			1		9
TOTAL	2	13	25	14	17	15	86



COMPLAINTS BY MONTH



	Jan	Feb	Mar	Apr	May	Jun	Jul	Aug	Sep	Oct	Nov	Dec
2009	0	0	2	4	8	7	20	12	14	6	5	1
2010	2	4	1	10	25	22	18	27	24	11	6	0
2011	0	2	1	2	13	25	14	17	15	0	0	0



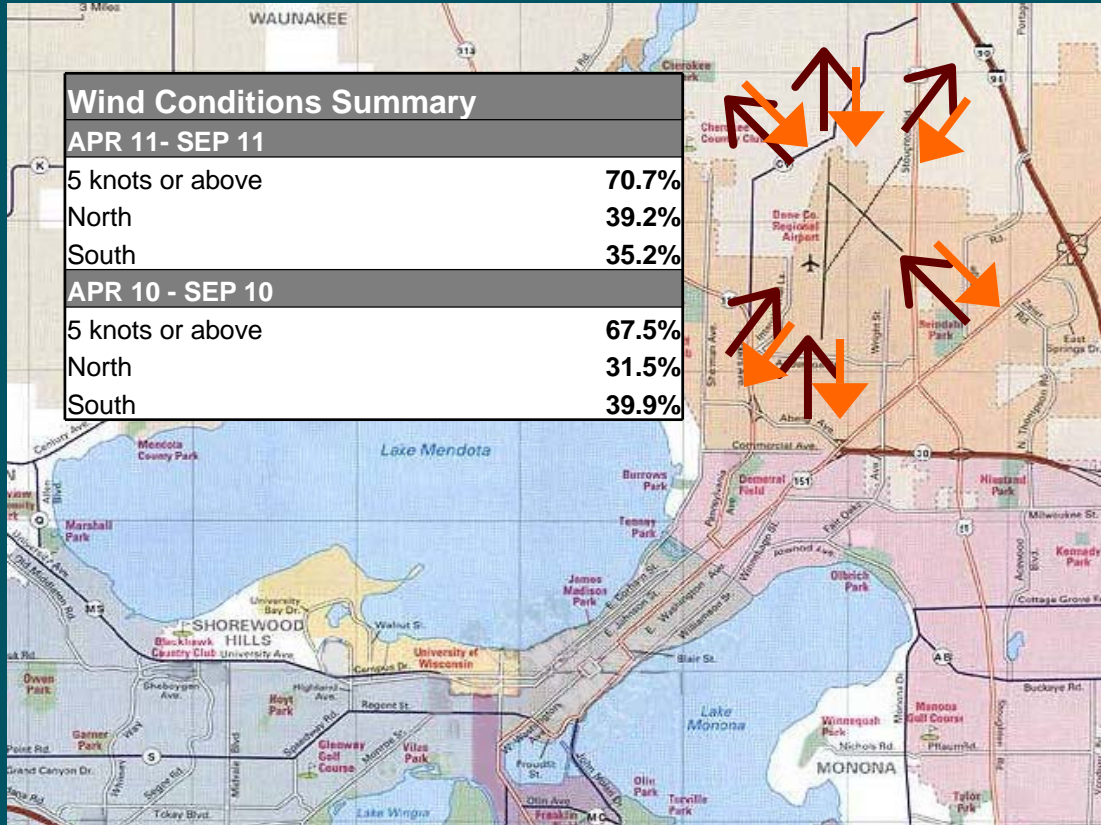
COMPLAINT HISTORY

	1	2	3	4	5	6	7	8	9	10	11	12	13	14	15	16	17	18	19	20	21	22	23	24	25	26	27	28	29	30	31	
A P R		A		M																												
M A Y											U	A A A	A M											G G G G G G G								
J U N						U U											G G M M M M M	G	A	A	M		A A U A A A		A G	M G		A	M G			
J U L				A M			U		A					G						A			A A		A U						M M M A	
A U G	U				M A A		U								A		A							M M U	M	A	M		M		A A A	
S E P	A A										A A U	A										M	M				M	U		M M M M M		

A = Airline
C = Cargo
G = General Aviation
M = Military
U = Unknown



WIND CONDITIONS SUMMARY



Direction of aircraft with winds from the north.



Direction of aircraft with winds from the south.

* Wind Direction percentages do not add up to 100% due to wind directions reported as calm or variable

Full time weather data



Wisconsin Wind Data

Month	Prevailing Wind	% Calm
Jan	WNW – 11.5	6.0
Feb	WNW – 12	6.9
Mar	NW – 13	6.1
Apr	S – 11.4	6.4
May	S – 10.4	7.0
Jun	S – 9.7	8.4
Jul	S – 9.2	9.9
Aug	S – 9.1	11.1
Sep	S – 9.8	9.9
Oct	S – 10.4	7.8
Nov	S – 10.7	5.7
Dec	WNW – 12.4	6.0
Annual	S – 12.4	7.6

NOISE ABATEMENT COMPLIANCE AUDIT

14

WEATHER / RUNWAY DATA	
WINDS AT 5 KNOTS OR HIGHER ¹	79.66%
VISIBILITY AT 5 SM OR LESS ¹	11.47%
RUNWAYS CLOSED ²	18/36 = 59:35 3/21 = 95:04 14/32 = 141:54

¹ – Based on METAR weather observations at the time of recorded aircraft operations.
² – Runway closures primarily due to runway maintenance.



NOISE ABATEMENT COMPLIANCE AUDIT (APR-SEP)

RUNWAY USE			
Aircraft observed departing to the North			43.73%
Aircraft observed arriving from the North			48.69%
Aircraft observed departing to the South			56.27%
Aircraft observed arriving from the South			51.31%
	Wind	Visibility	Ceiling
South Departure	71.05%	13.96%	26.39%
South Arrival	66.42%	9.77%	19.85%
16,325 operations by Passur aircraft monitoring system			
2,105 non-compliant observations		87.11% Compliance	
110 actual non-compliant		99.93% Compliance	



Passur Aircraft Monitoring System Audit

16

Apr – Sep '11: 16,325 operations

Wx criteria filter: 2,105
(Tower Order, winds, ceiling, visibility)

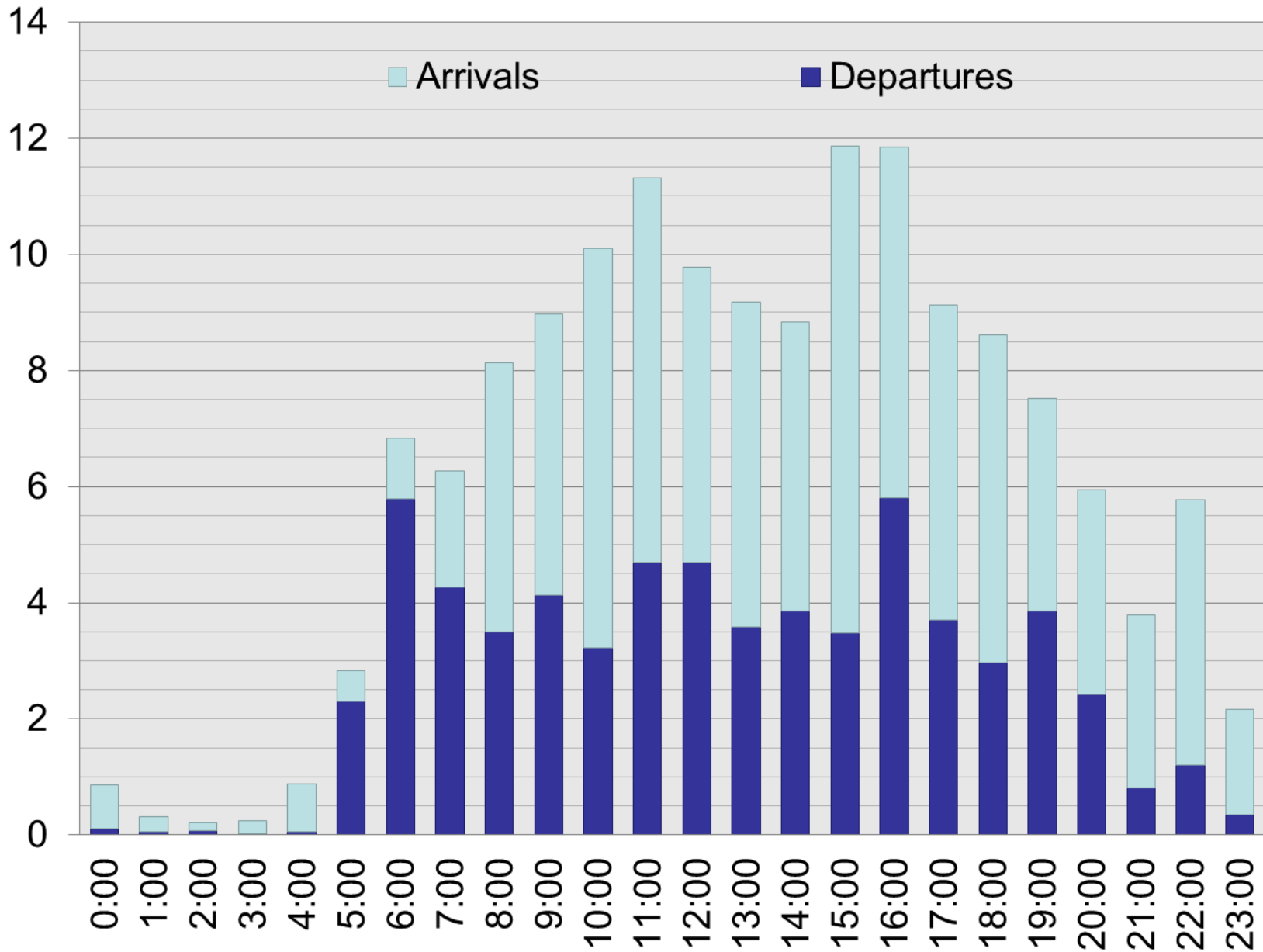
Manual filter including: 110
(ILS, traffic, construction, 12,500 lbs)

Non-compliant observations: 110



AVERAGE HOURLY OPERATIONS (APR-SEP)

17



Changes Since April

- Addition of Terminal signage with NAP
- Full implementation of the Passur Aircraft Monitoring System for auditing of NAP compliance
- Updated DCRA website to allow reporting of noise concerns via web based format
- Issuance of NOTAM for pilot education of NAP
- Increased vigilance by Airport Operations staff with advising aircraft operations of NAP when ATCT is closed
- In July, Airport staff met with Eken Neighborhood Association



CONTACT INFORMATION

19

24 Hour Aircraft Noise Line: **246-5841**

Online Form: <http://www.msnairport.com/community/noise.aspx>

Madison Automated Weather: **249-0615**



Questions?



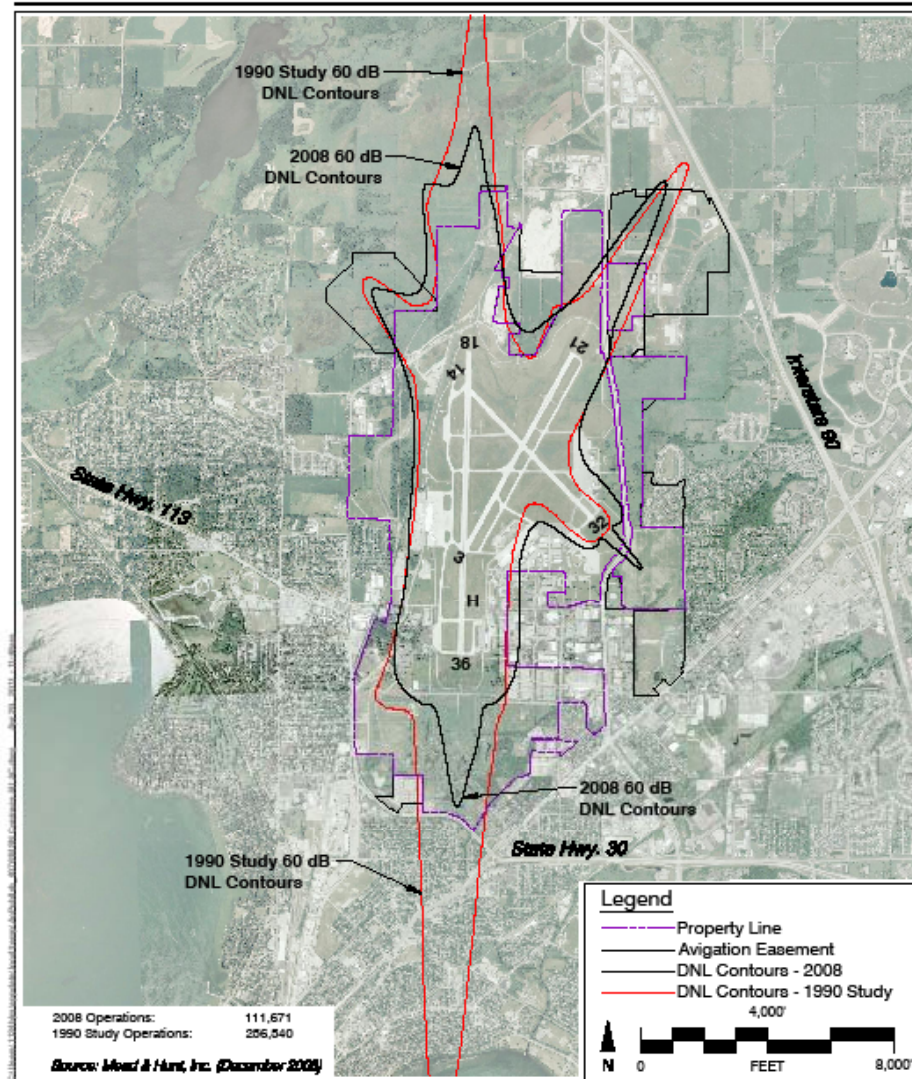


Exhibit 7

2008 All Aircraft
 Comparison with the 1990 Noise Compatibility Study (Study Year 2010) Contours
 Dane County Regional Airport

