

Proposed Steering Committee Work Plan

Intergovernmental Cooperation Element

(February through Fall of '04)

March 3rd - Noon

Topics: Process Refinement, Element Review, and Background
 Input: Draft Documents
 Output: Finalized Work Plan, Scope of Element

March 24th - Evening

Cover: More Complete Information
 Input: Previous Plans, Requested Additional information, Education Session?, Q & A? Begin G & O?
 Output: Issues, "Complete" Information

April 7th - Noon

Cover: Survey Work
 Input: Work Group Survey Proposal
 Output: Draft Survey Questions

May - Evening

Input: Begin Goals & Objectives Refinement

Output: 1st Draft of Goals and Objectives

June - Noon

Input: Goals and Objectives
 Output: Finalized Draft Goals and Objectives

June/July – Evening

Input: Steering Committee Preview of all goals and objectives.
 Output: Process & Milestone Refinement

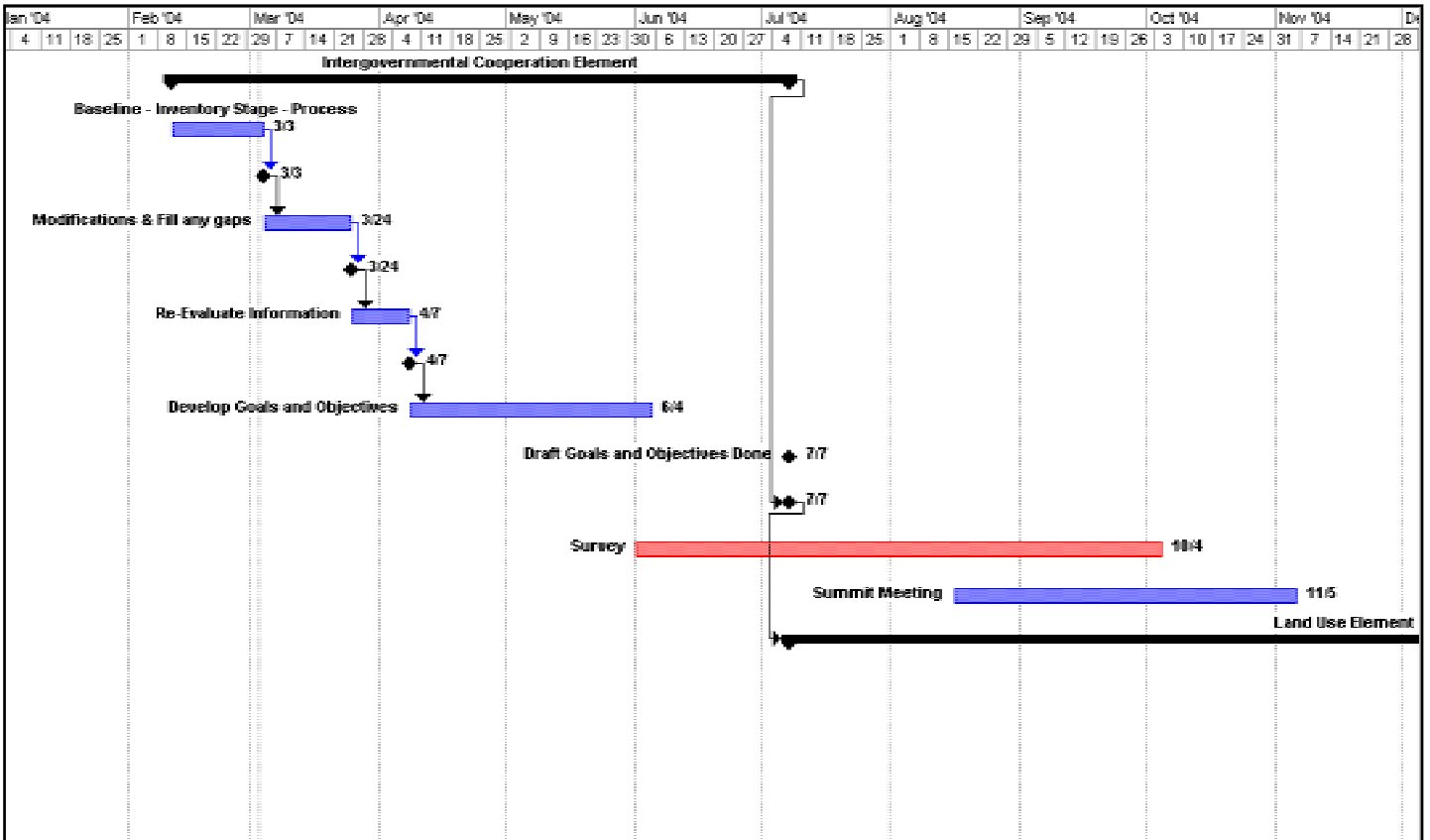
July – Milestone Meeting

Input: Draft Goals and Objectives form all groups.
 Output: Steering Committee & Work Group Feedback on Goals and Objectives

Summer/Fall '04 - Survey

Fall '04 – Intergovernmental Cooperation Summit Meeting

Draft Final Goals and Objectives After Summit



Land Use Element

(Fall of '04 Through Spring '05)

August – Noon

Topic: Begin Land Use Element.-background, baseline
 Input: Trends, Previous Plans
 Output: Scope of element, Issues & Information Requests

Sept – Evening

Topic: Review gathered additional information
 Input: Refinements from last meeting, Additional Information
 Output: First Draft of Land Use Goals and Objectives

Oct – Noon

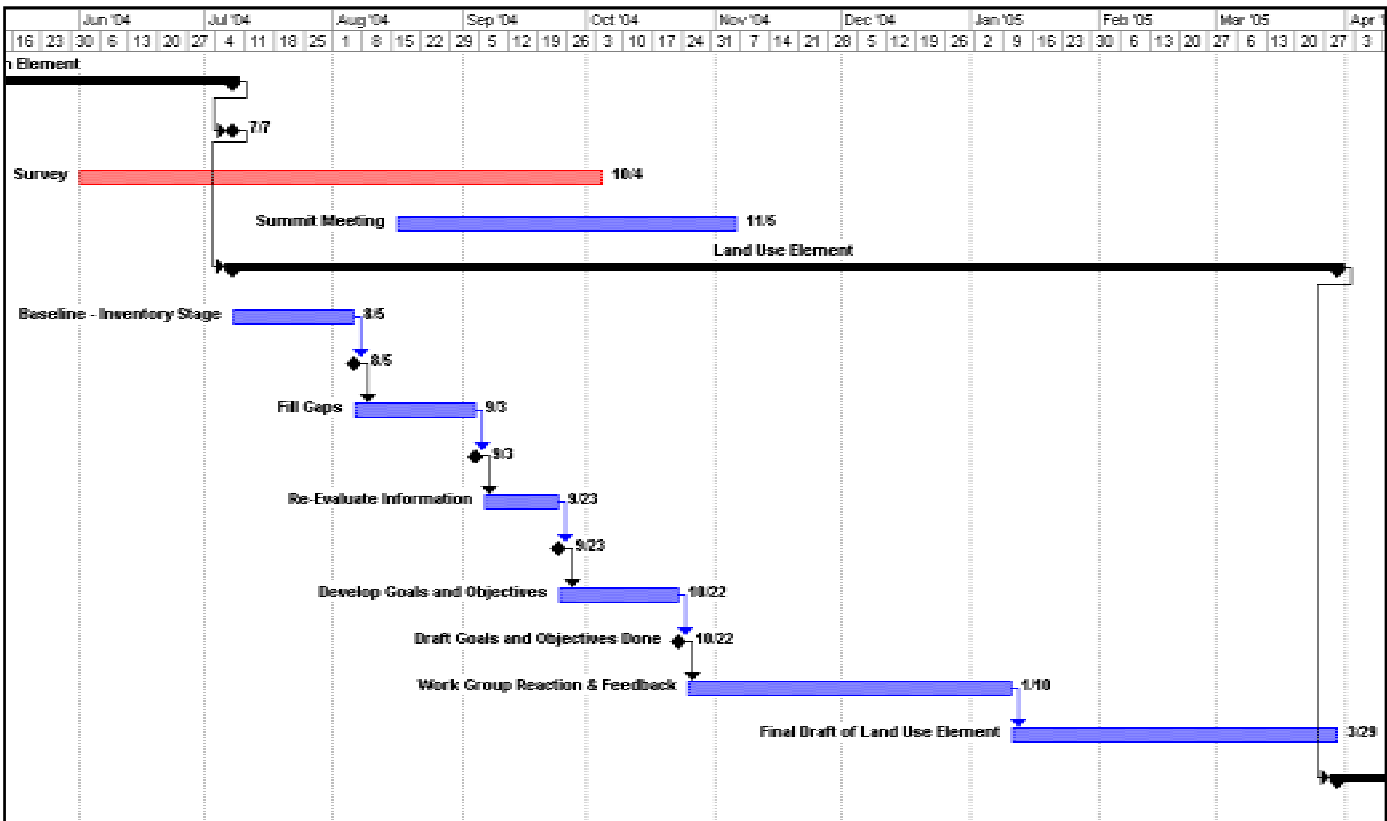
Topics: Goals and objectives draft
 Input: First Draft & Work Group Information
 Output: Second Draft, send to work groups for feedback

Nov – Evening

Topic: Integrate Feedback (focus group, workgroup & survey)
 Input: Survey Feedback, Focus Group Feedback; Work Group Feedback
 Output: Rough Final Draft

Dec – Noon

Topic: Revise Draft
 Input: Rough Final Draft
 Output: Final Land Use Element



Overall 2004 Work Plan – Steering Committee -- Proposed

