

# **Dane County Land & Water Resources Department**

---

**Presentation to the Dane County  
Comprehensive Planning Steering Committee**

**April 13, 2005**

# Talk Overview:

- **Committees**
- **General Department Organization  
Including Internal Coordination & Education**
- **External Coordination & Incentives**



# Committees

**Environmental, Agriculture, and  
Natural Resource Committee**

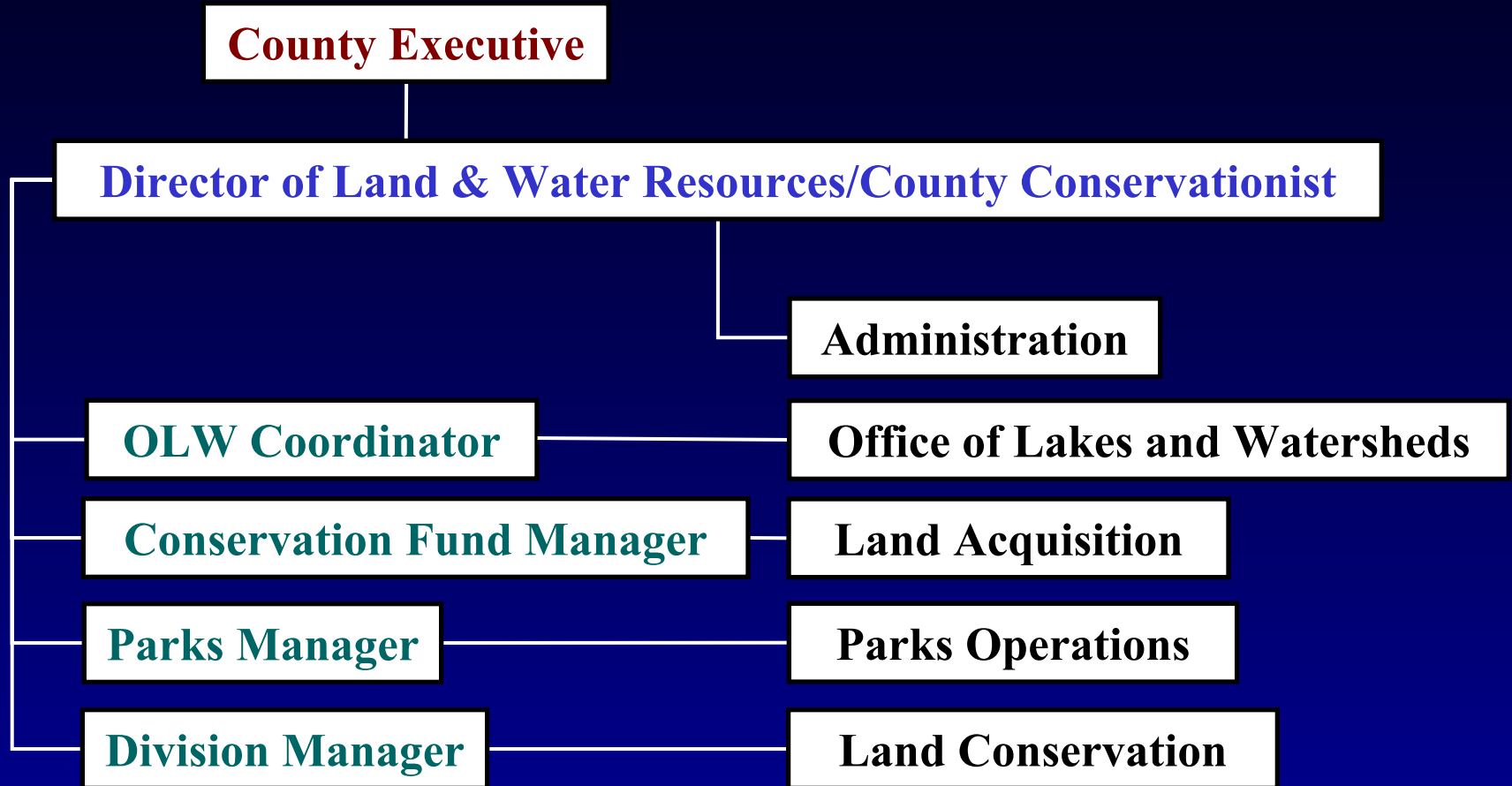
**Land Conservation Committee**

**Lakes and Watershed Commission**

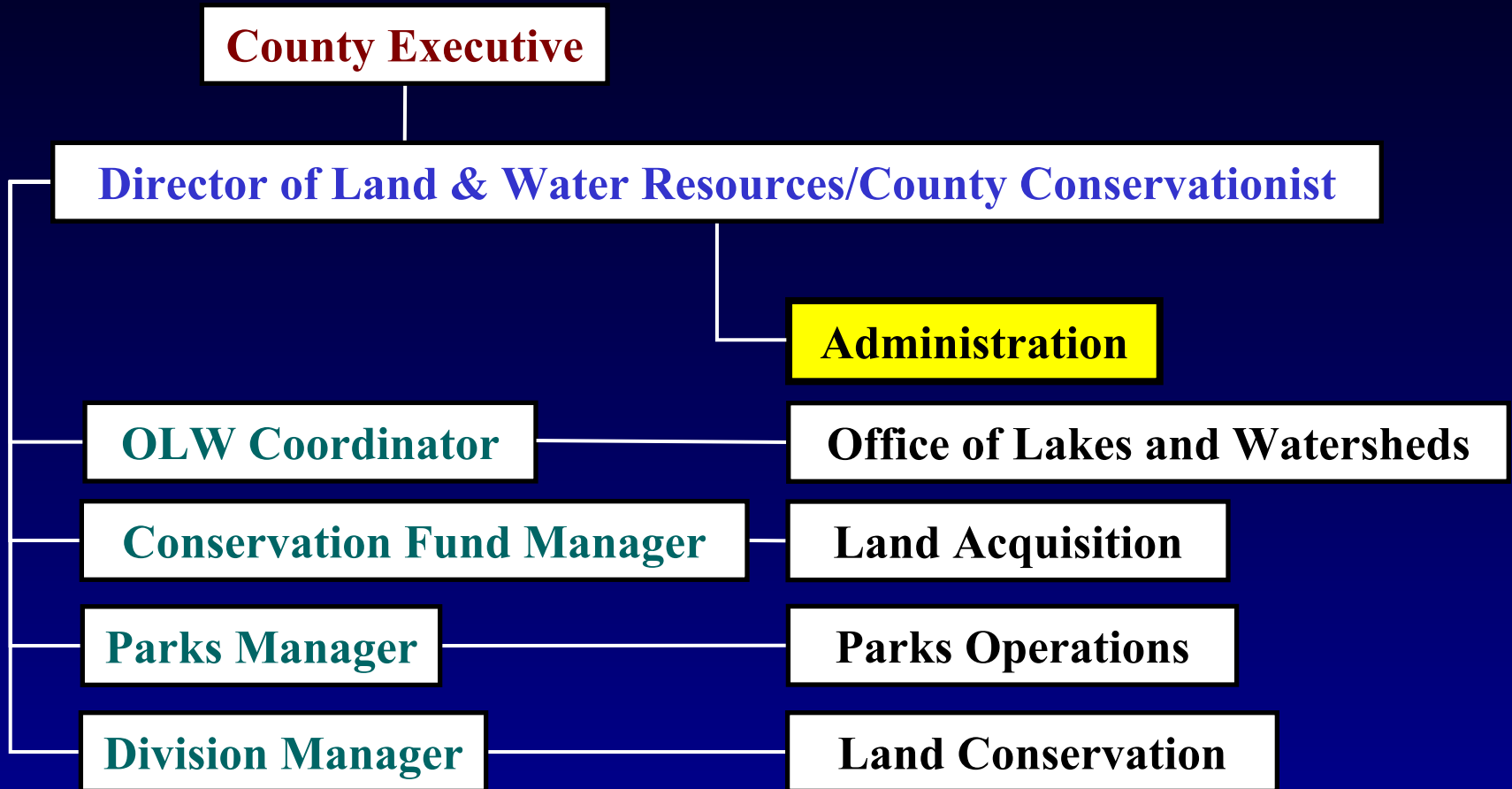
**Parks Commission**

---

# Department Organization



# Administration Division

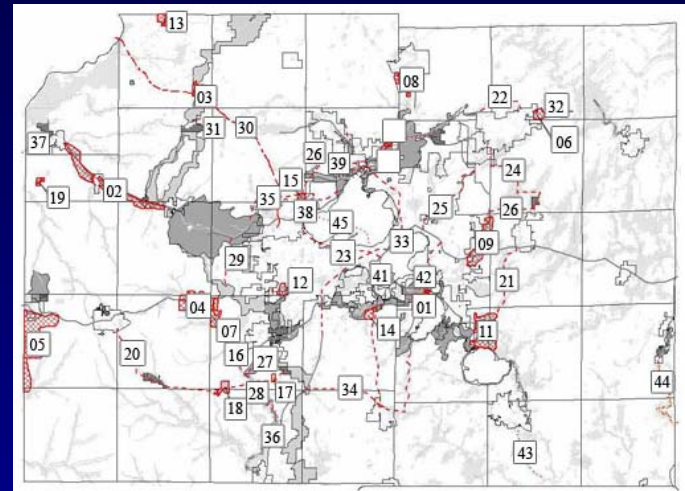


# Administration Division

Provides administrative oversight and support, and GIS services to the entire department. The Division is also responsible for watersheds and park planning.



Administrative  
Support

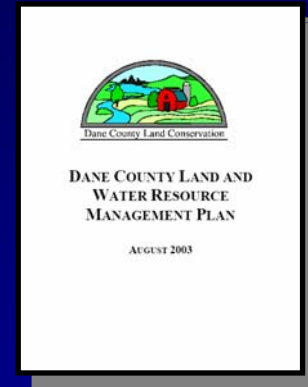
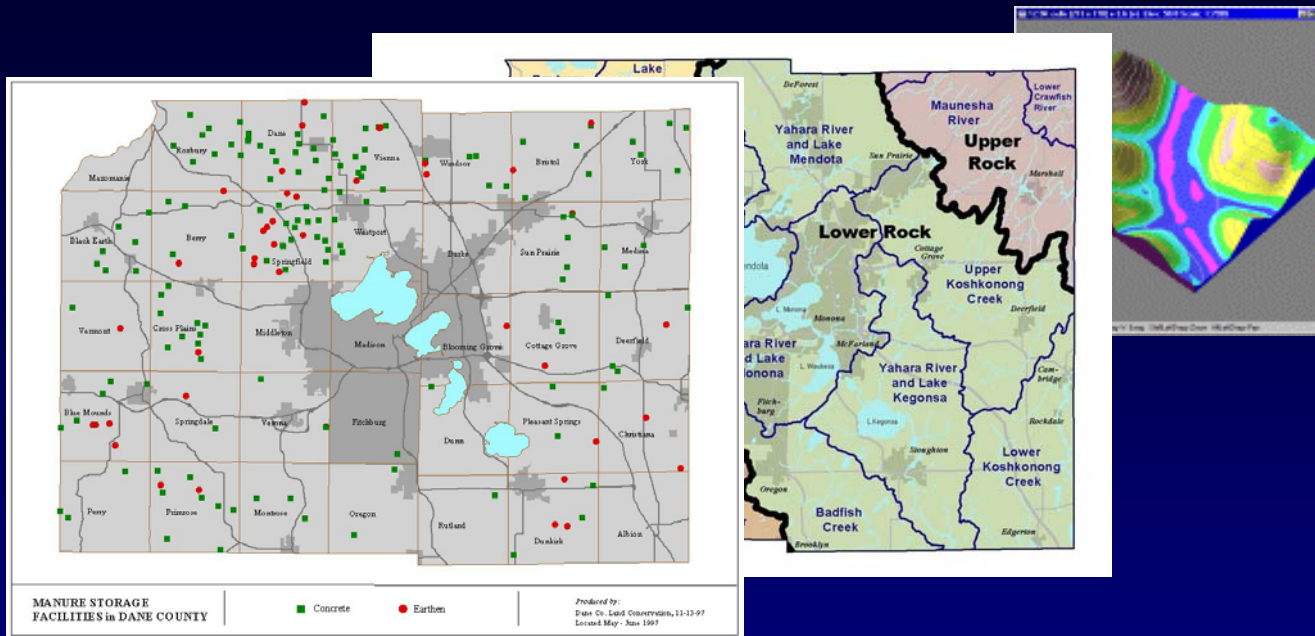


Parks and Open Space

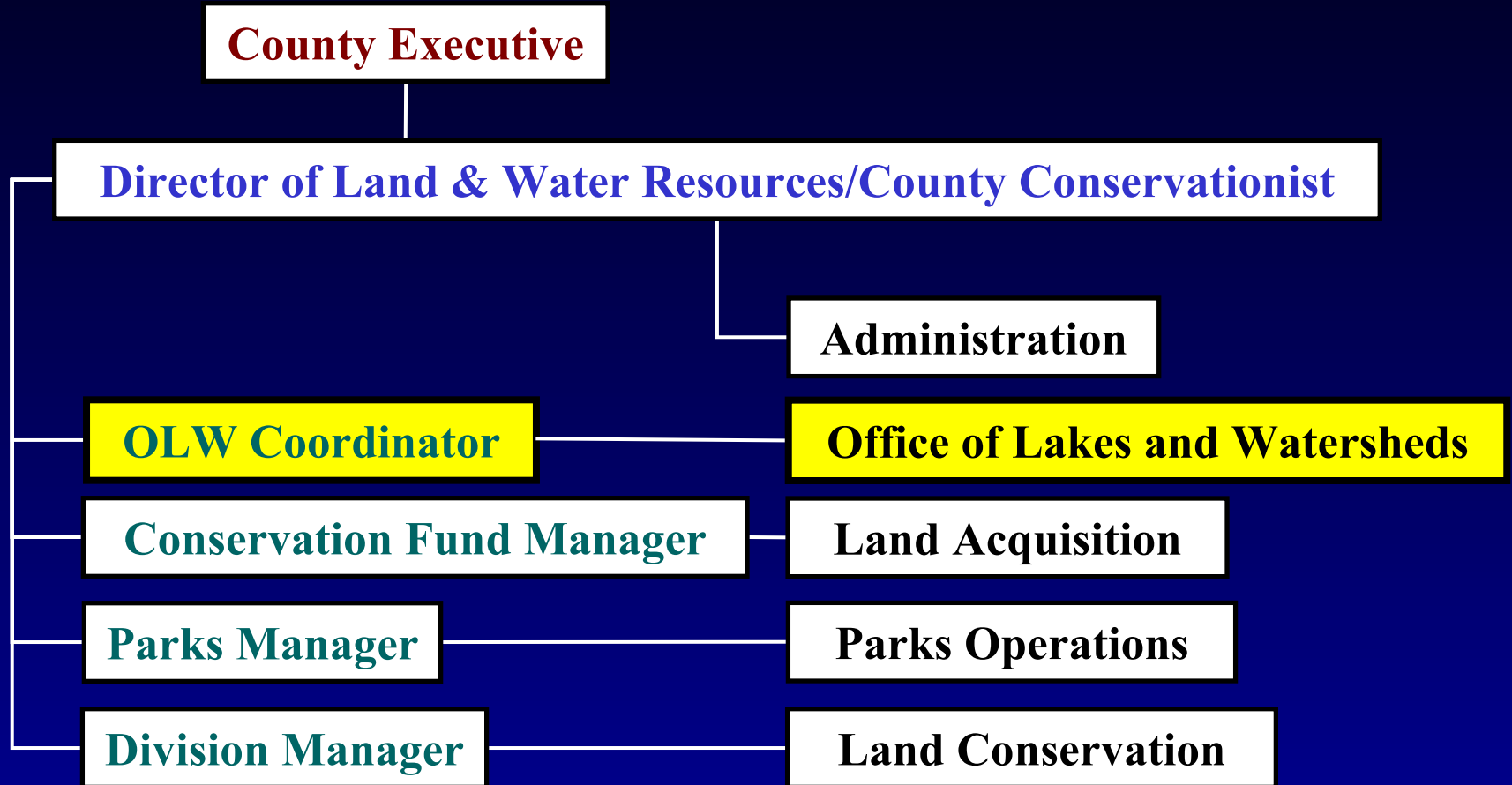


# Administration Division (cont.)

## GIS Applications and Support



# Office of Lakes and Watersheds



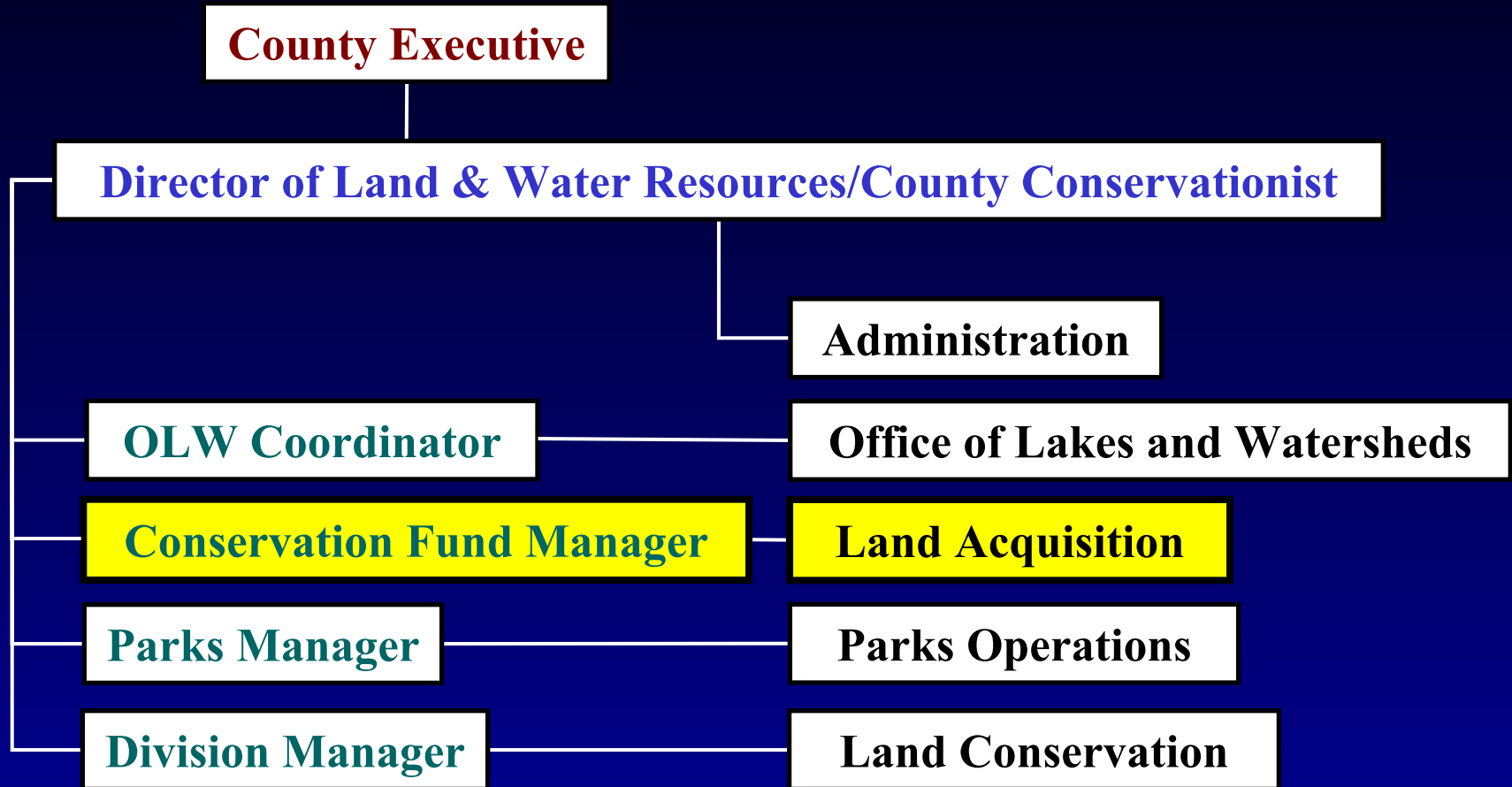
# Office of Lakes and Watersheds

## Sample of Current Issues

- Aquatic Plant Management in Dane County
- Phosphorus Control in Dane County
- Invasive Work Group Report on Zebra Mussels
- Yahara Lakes Advisory Group (YLAG)
- Lake Property Numbering
- Joint Storm Water Permit Group Info. & Education Plan
- Erosion Control & Stormwater Mgt Ordinance/Manual
- Personal Watercraft
- USLE Spreadsheet
- Slow-No-Wake Boating Regulations
- Invasives
- Flood Mitigation Planning



# Land Acquisition Division



# Land Acquisition Division

- Conservation Easements
- Parks
- Landfills
- Office space
- Buildings



# Land Acquisition Division (cont.)

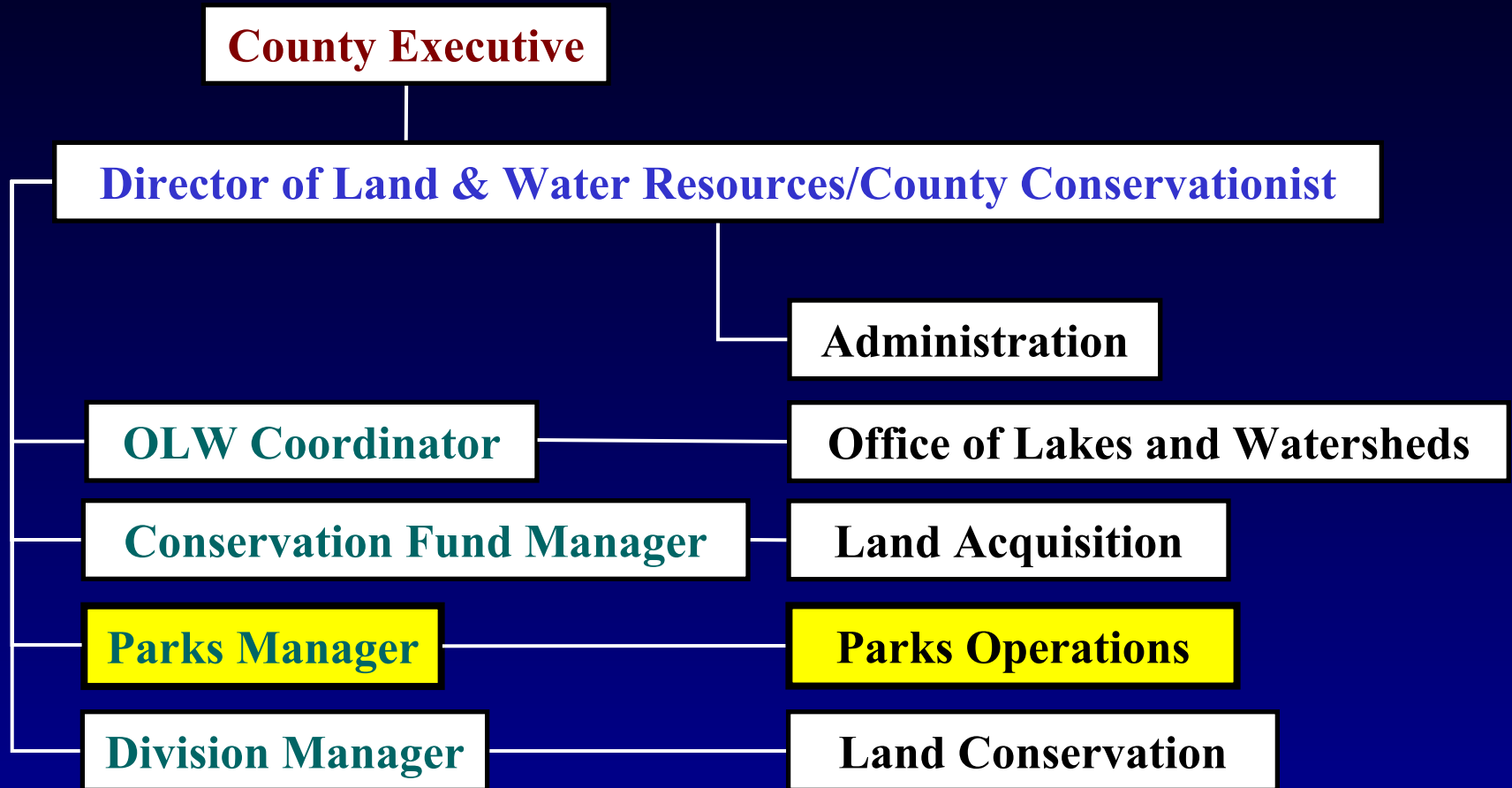
## Dane County Conservation Fund

Established in 1990 to acquire parklands, expanded in 1999

- \$30 million over 10 years
- Money can only be spent on lands identified in the Dane County Parks & Open Space plan
- 20% of the funds are set aside annually for grants to local units of government and nonprofit organizations.



# Parks Operations Division



# Parks Operations Division

Examples of  
Responsibilities:



*Parks/Campgrounds*



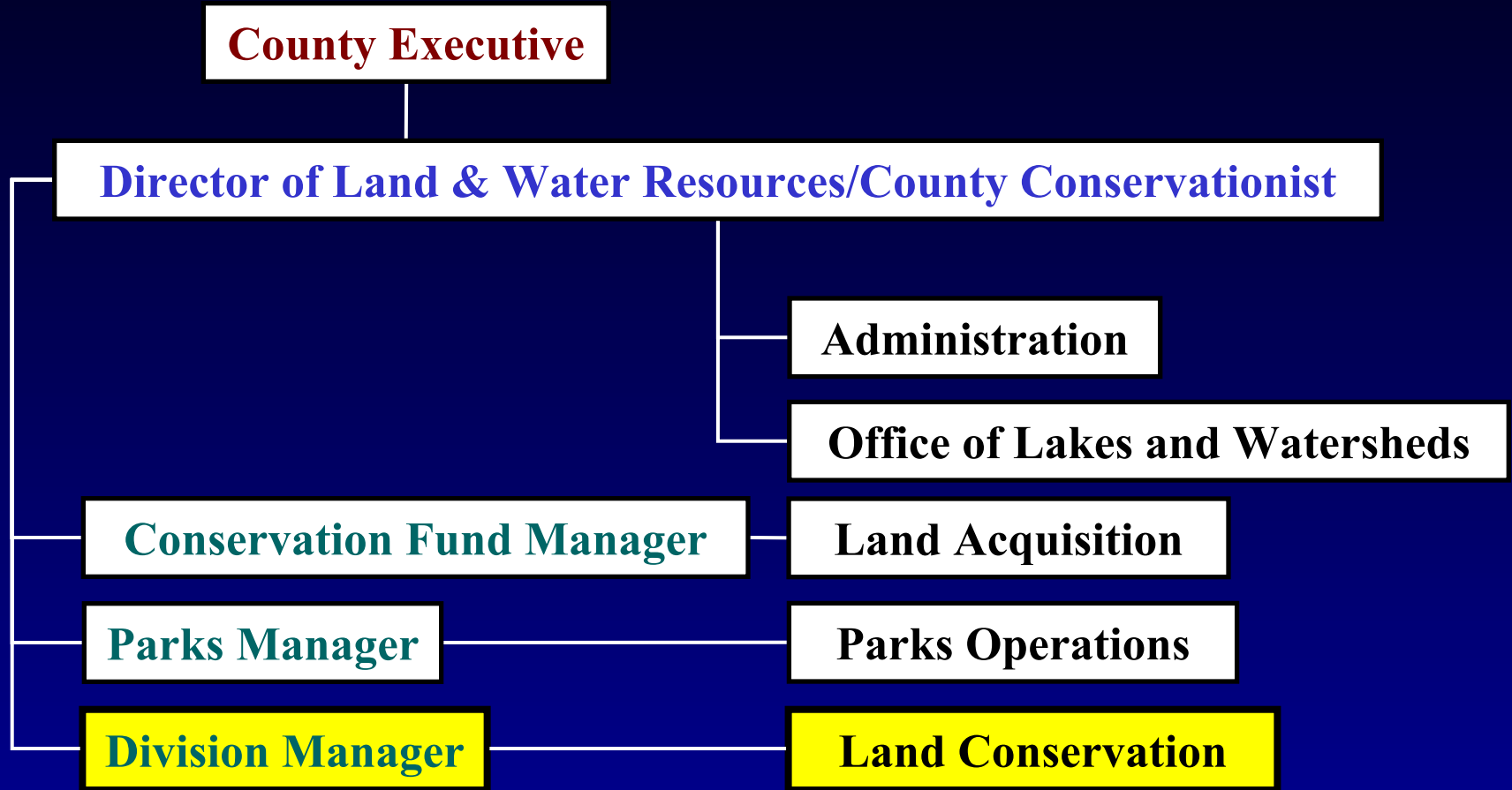
*Lussier Center*



*Weed Harvesting*



# Land Conservation Division



# **Land Conservation Division (cont.)**

## **Agriculture**

- **Conservation Planning Assistance**
- **Technical Service**
- **Local/State/Federal Conservation Program Mgt.**
- **Agricultural-related GIS Applications**

# Land Conservation Division (cont.)

## Urban

- 
- Erosion Control and Stormwater Mgt Program
  - Municipal Assistance Intergovernmental (66.30) Agreements
  - Urban-related GIS Applications

# External Coordination & Incentives:

- Federal Partners
- State Partner
- Local & Non-Profit



# External Coordination & Incentives (cont.):

## Federal Partners

- NRCS
- FSA
- APHIS
- USGS
- EPA
- USFWS
- NPS (Parks)
- FEMA
- ACOE



# External Coordination & Incentives (cont.):

## State Partners

- DNR
- DATCP
- UW
- DOA
- DOT



# **External Coordination & Incentives (cont.):**

## **Local & Non-Profit**

- Watershed Organizations**
- Friends/Conservation Groups**
- Local Governments**
- NHLT**
- Ice Age**



# Summary

