

Economic Development  
Opportunities for Dane County

Dane County Comprehensive Plan  
HED Work Group Meeting

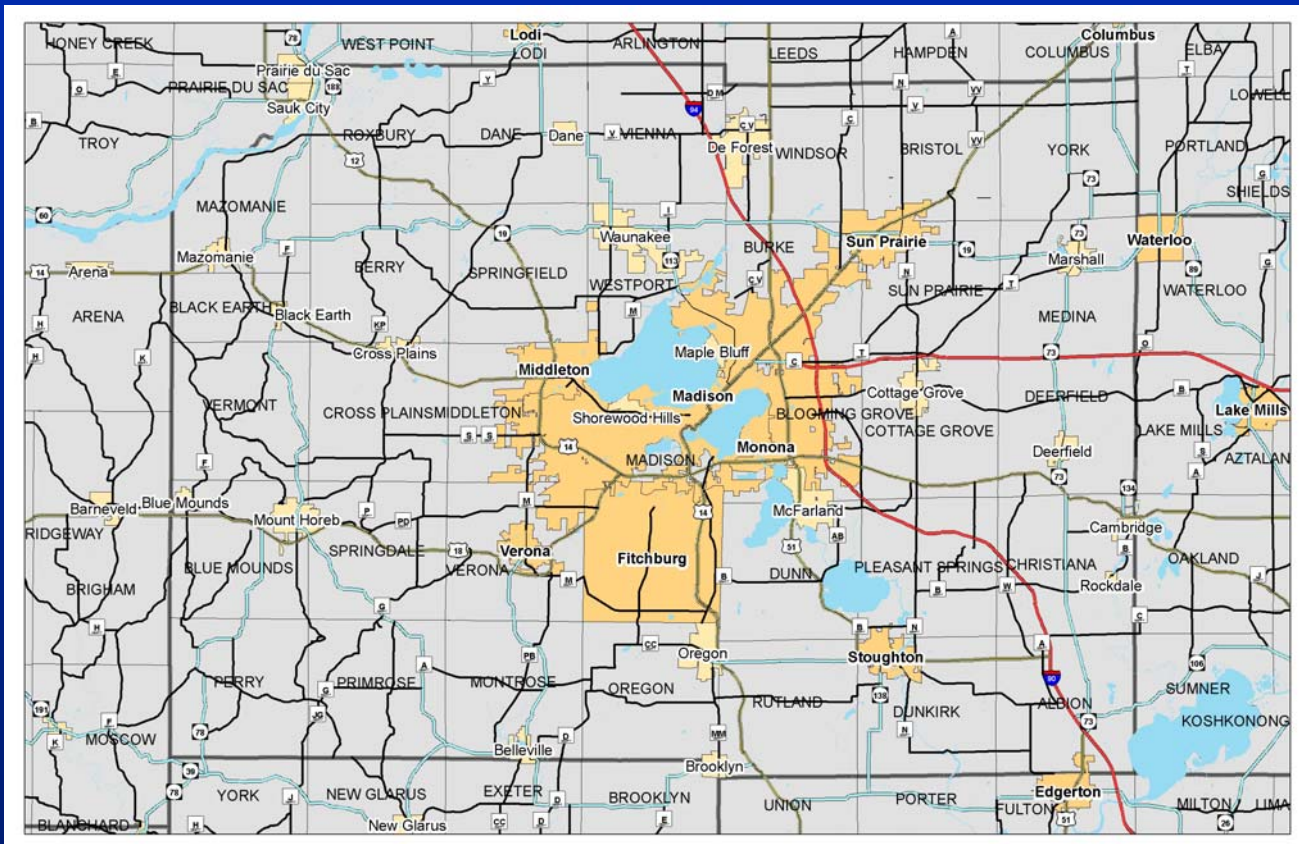
Lussier Heritage Center

Madison, WI

10/11/05

- Comp plan scope
- Draft process/timeline
- Dane County revenue sources
- Revenue for economic development
- Economic development review and brainstorm

# Dane County Comp Plan Scope of Influence



# Scope cont' d

---

- Unincorporated areas
- Incentives
  - Grant programs
  - Education programs
  - Training programs
- Identify economic development zones
- Facilitate private/public partnerships
- Facilitate inter-governmental cooperation

# Scope cont' d

---

- Reduce inter-governmental conflicts around boundary issues and development
- Coordinate forums, meetings, conferences
- Direct funds toward a development project, or an issue
- County property transfer
- Purchasing policies
- Initiate fundraising efforts

# Scope cont' d

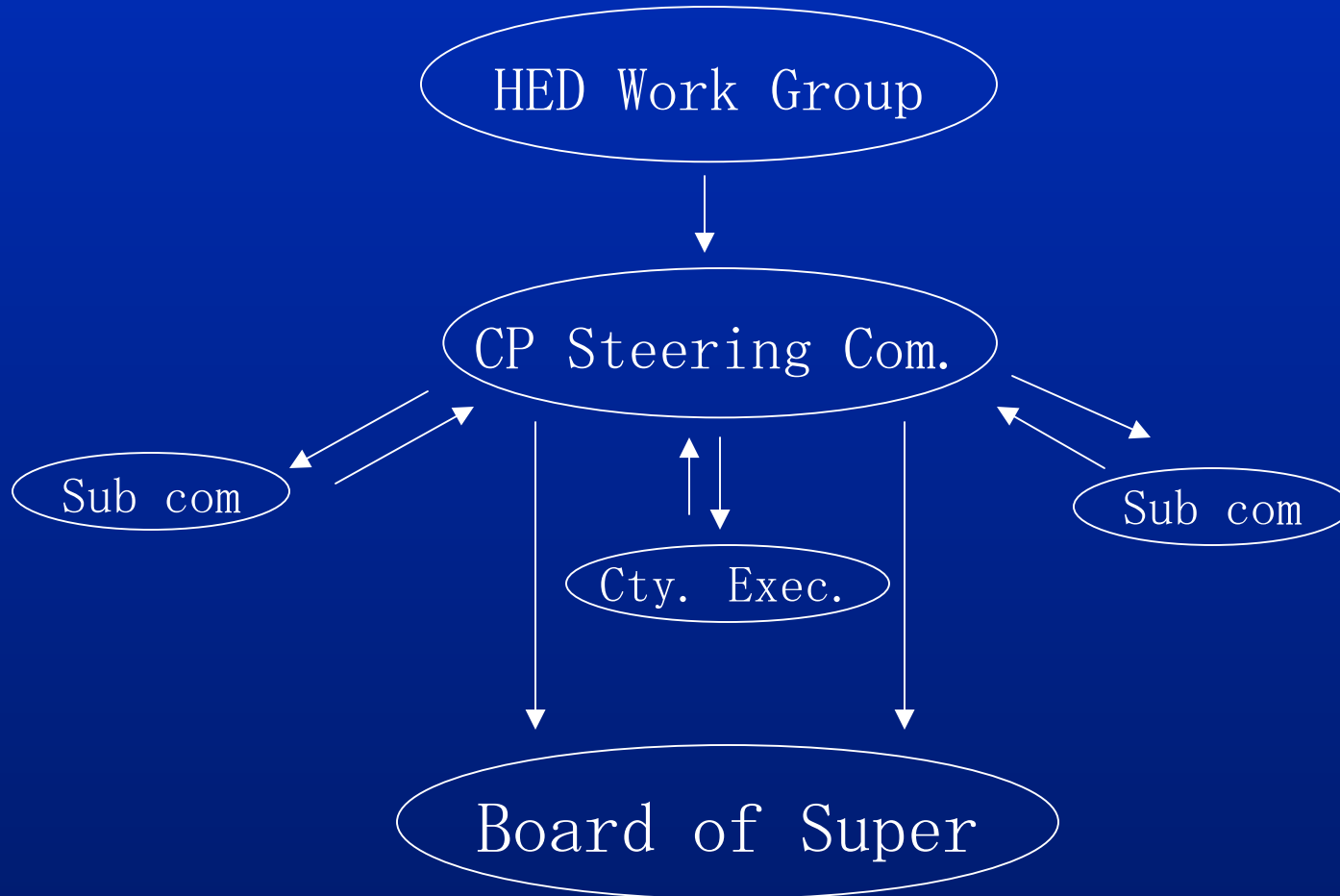
---

- What role should Dane County play to promote economic development?

For example, direct Dane County to:

- Become a technical resource for economic development
- To create an economic development authority, or a regional econ. dev. authority

# Comp plan draft process



# Timeline

## Housing and Economic Development Work Group DRAFT TIMELINE October 11, 2005

### PHASE III

**December 2004:** Integrate Feedback into Goals & Objectives

**January 2005:** Discussion on unresolved goals & objectives

**February 2005:** Complete discussion on goals & objectives. Finalize goals & objectives

**March 2005:** Introduce policies and implementation

**April, 2005: Joint Education Session - Implementation 101:** Coordination, Education, Technical Assistance & Incentives

**May 2005:** No meeting

**June 2005: Joint Education Session - Implementation 101:** Infrastructure, public investment, and direct services

**July, 2005: Joint Education Session - Implementation 101:** Acquisition

**August 2005: "Brainstorm Session One"** on Housing Goal 1 and Objectives as it relates to coordination, private/public partnerships, education, technical assistance, incentives, and acquisition, public investment, infrastructure, direct services, and regulation.

**September 2005: Land Use Element Kick-off**

**September 2005: Joint Education Session - Implementation 101:** Regulation

**October 2005: "Brainstorm Session Two"** on Economic Development Goals and Objectives as it relates to five broad economic development areas including organizational development, infrastructure development, business development, workforce development and cash flow development.

**November 2005:** Review brainstorm session suggestions for Economic Development, include any missing policies, and finalize policies based on criteria.

**December 2005:** Review brainstorm session suggestions for Housing, include any missing policies, and finalize policies based on criteria.

### PHASE IV

**February 2006:** 1<sup>st</sup> Draft of HED Plan Chapter, review and finalize

**March 2006:** Submit to Dane County Board of Supervisors

**May 2006:** Adopt Dane County Comprehensive Plan

# 2005 Dane County Operating Budget

County Sales Tax	\$42,548,000
Licenses and Permits	\$1,737,050
Intergovernmental Charges for Services	\$20,153,100
Miscellaneous	\$17,547,060
County Property Tax	\$100,857,453
Other Financing Sources	\$248,300
Public Charges for Services	\$38,890,864
Fines, Forfeitures and Penalties	\$2,462,100
Intergovernmental Revenues	\$165,597,622
Other Taxes	\$2,880,000
Fund Balance Applied (Levied)	\$3,553,858
<b>Total Operating Budget</b>	<b>\$396,475,407</b>

# Revenue for Economic Development

---

- County revenue, debt (taxable GO), loans
- Local, state, federal grants
  - CDBG
  - BUILD
  - HOME
  - Revolving loan fund
- TIF financing
- Private donations/investment
  - Angel network
  - Venture capital

# Revenue cont' d

---

- Taxes – property tax, wheel tax
- Fees for service
- Private/public partnerships – General
  - Financial institutions transaction incentives
  - Revenue sharing
  - Wisconsin Shares/Chip program

# Economic Development Components for CP

- Organizational development
- Infrastructure development
- Business development
- Workforce development
- Revenue/Cash flow development

# Trends to remember...

- Aging boomer population
- Labor/job shortage
- Lack of retention of 25-35 population
- Rising housing prices
- Small businesses
- 1 in 12 DC residents is a minority

- What role should Dane County play to promote economic development?
- Direct Dane County to become a technical resource for economic development – For example, create an economic development authority, regional econ. dev. authority, department of tourism, etc...

Dane County role in  
economic development -

~~brainstorm~~

# Commercial/industrial development brainstorm

Labor force, job growth,  
ownership opportunities  
brainstorm

---

Small business

~~brainstorm~~

# Sector support brainstorm

---

Economic development  
infrastructure – brainstorm

# Cash flow/finance brainstorm

---

- 21

# Infrastructure brainstorm

---

# Policy and analysis brainstorm

---

# Marketing brainstorm

---