



# Columbia County

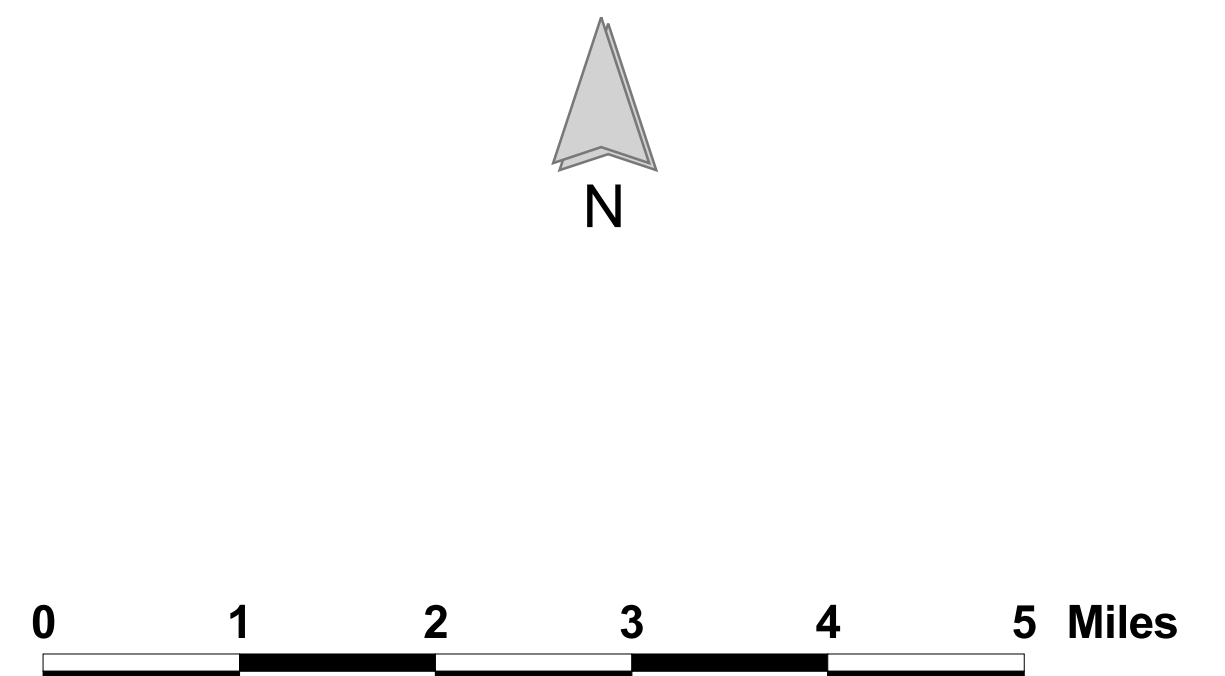
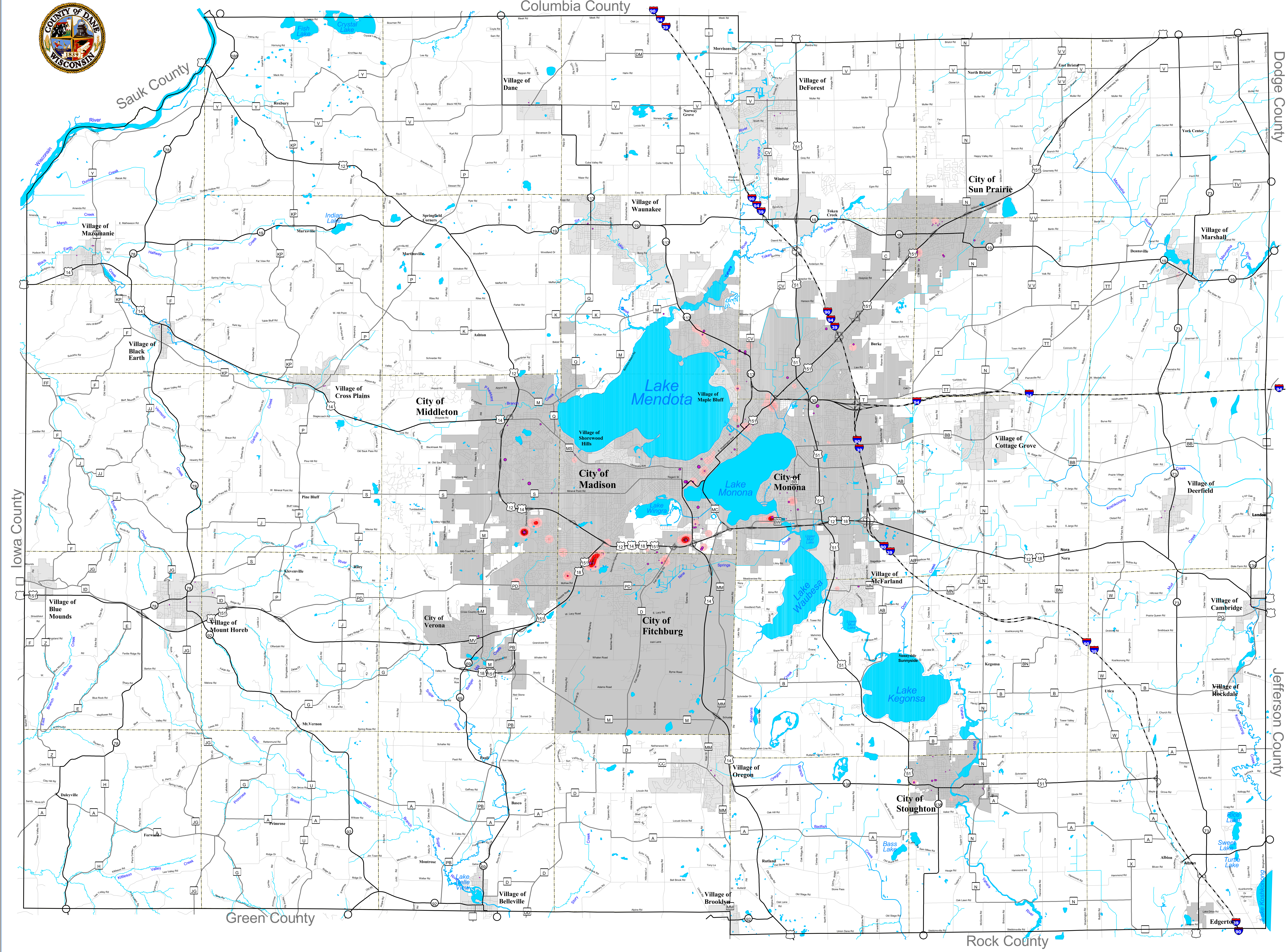
## Section 8 Density and Federally Assisted Project Housing

### Federally Assisted Project Housing Number of Units

- 1 - 25
- 26 - 50
- 51 - 100
- 101 - 150
- 151 - 200
- 201 - 350

### Section 8 Vouchers

- Low Density
- High Density



September 2004  
 Created by The Staff at Dane County Planning and Development.  
 All information is believed to be accurate but is NOT guaranteed to be without error. This map is intended for general reference use and not intended for detailed site-specific analysis.

Sources:  
 Section 8 Housing: MAMPO 2004  
 Federally Assisted Housing: MAMPO 2004  
 Municipal Boundaries: DCRPC 2004  
 Roads: DCPD 2004