





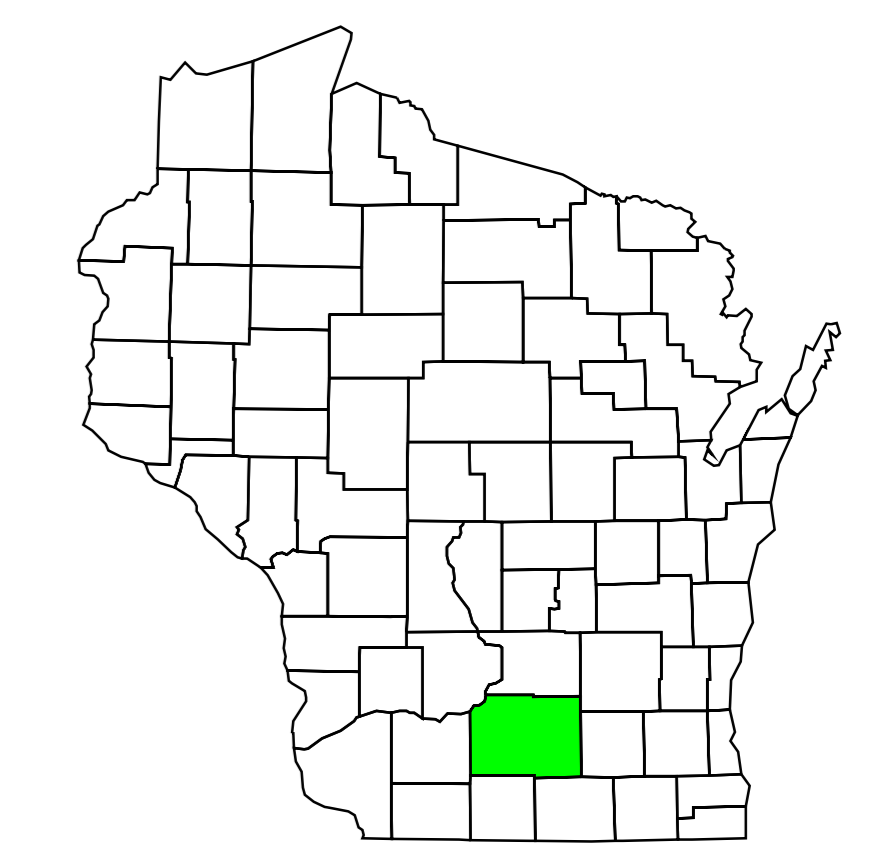


Environmental Corridors Dane County June 2004

-  Urban Service Area
-  Limited Service Area

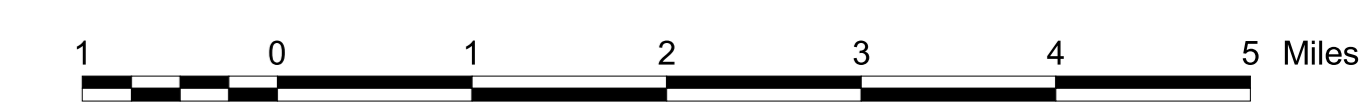
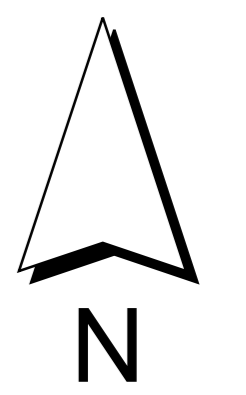
-  Environmental Corridors
-  Open Water
-  Rural Area
-  Incorporated Area

Note to User:
This map is a general representation of the adopted Urban Service Areas and Environmental Corridors effective the date indicated. The map user should consult the official detailed up-to-date maps maintained by the RPC for specific interpretation of these delineations.



Dane County, Wisconsin

 **The Dane County
Regional Planning Commission**



1:62,500

Lambert Conformal Conic Projection
Dane County Coordinate System - NAD 83(91)

Map Created by DCRPC, 2/2003.
Source Info:
Urban/Limited Service Areas: 04/02, Environmental Corridor Maps (DCRPC)
Open Space Corridors: 04/02, Environmental Corridor Maps and Town Plan Maps (DCRPC)
Civil Division Limits: 10/01, Assessment Records (DCRPC)
Street Base: 4/95, Orthophoto Derived (DCLUD)
Hydrography: 12/00, 1:24000 (WDNR)

