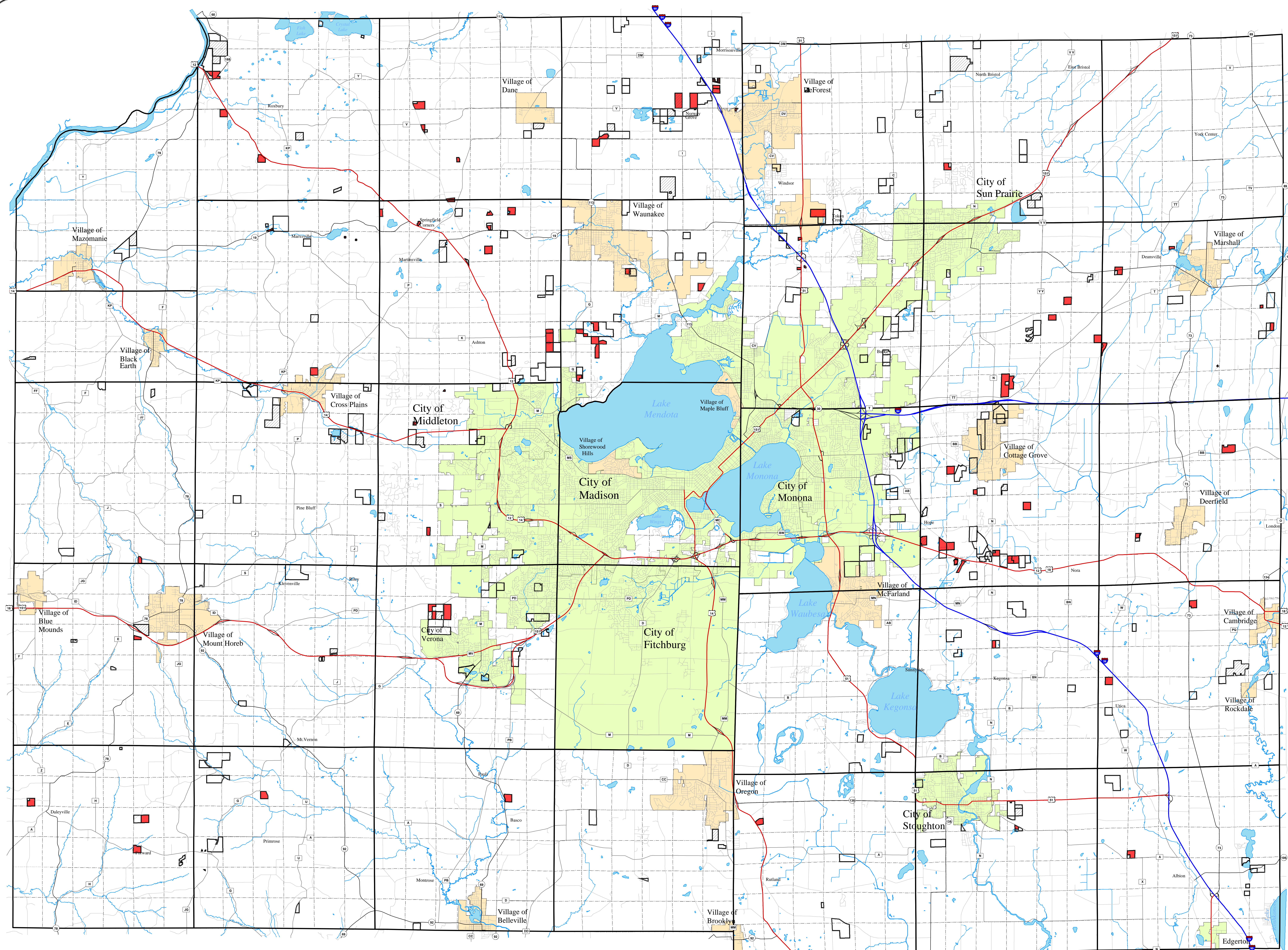


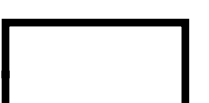

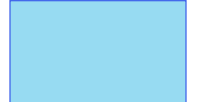

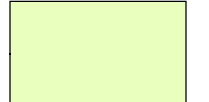

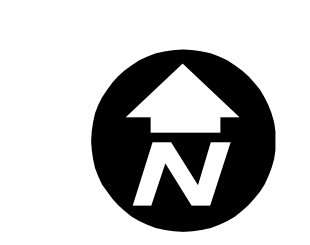


Mineral Extraction Sites



- S
T
A
T
U
S**
-  CUP Active
 -  Cup Expired
 -  Active
 -  Expired
-
-  Water
 -  Section Line
 -  City
 -  Village

For information about past, present or future mineral extraction sites contact Dan Everson at the Dane County Zoning office at 608-267-1541.



1" = 5000ft



Sources:

- Mineral Extraction Sites: 2004, DCPD
- Municipal Boundary: 2004, DCPD
- Roads: 2004, DCPD
- Hydro: 1995, DCLIO

Map prepared and printed by Dane County Planning and Development October 2004