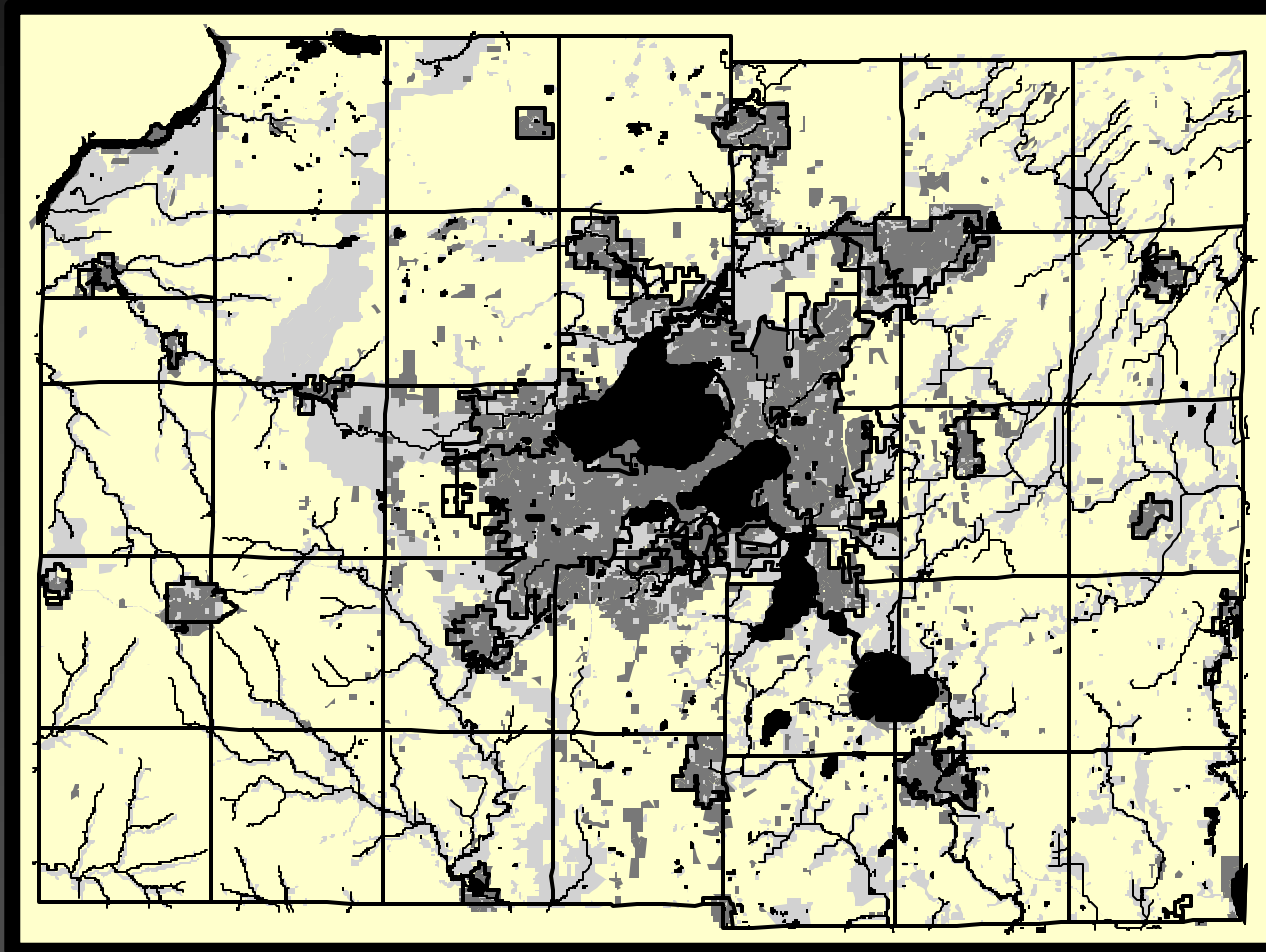




Dane County Comprehensive Plan



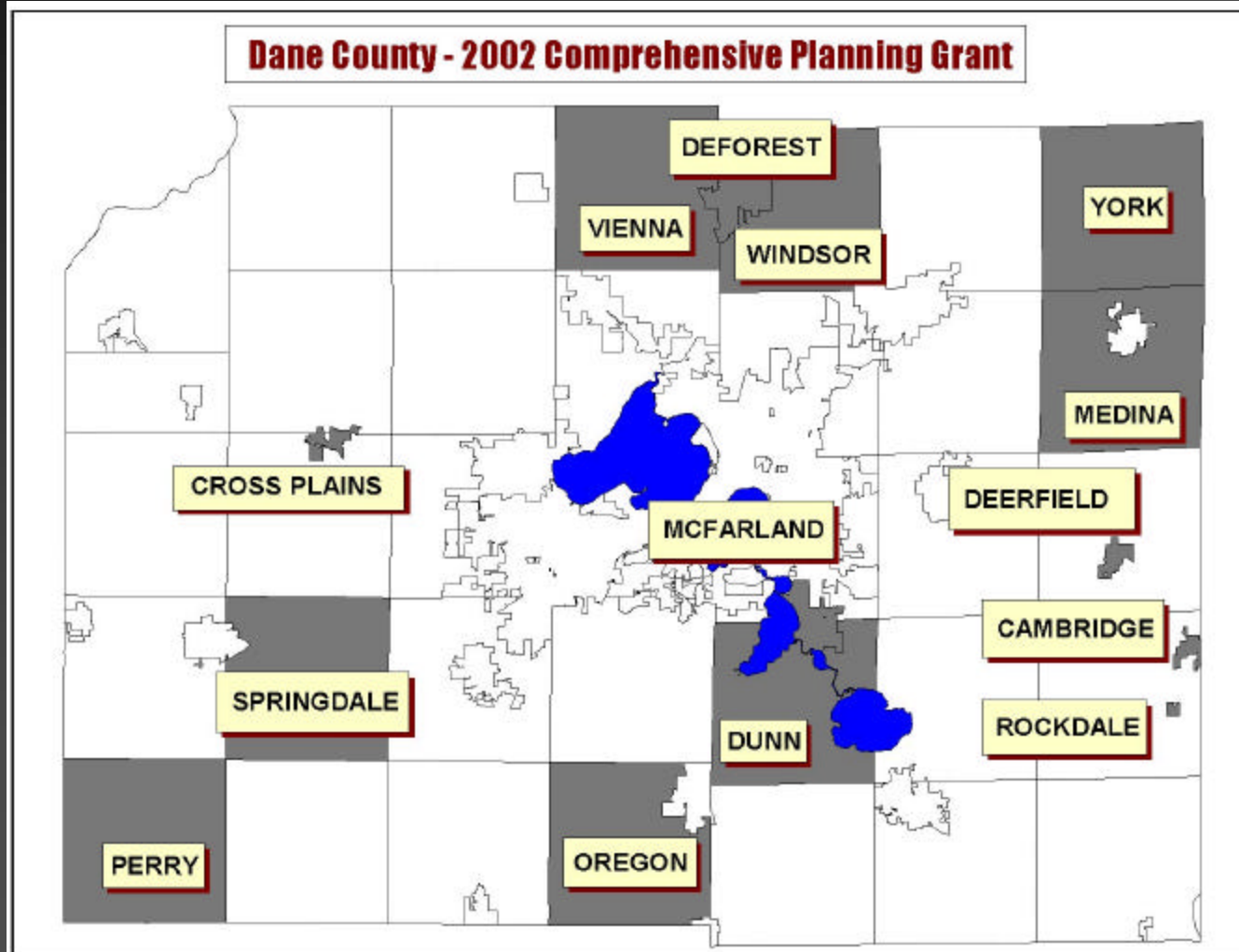


Comprehensive Planning Grant

- Fourteen communities joined with county
- 2006 deadline
- \$403,000 total grant (\$175,000 County share)
- County to provide staff / pass-through for completion of county and local plans



Participating Communities





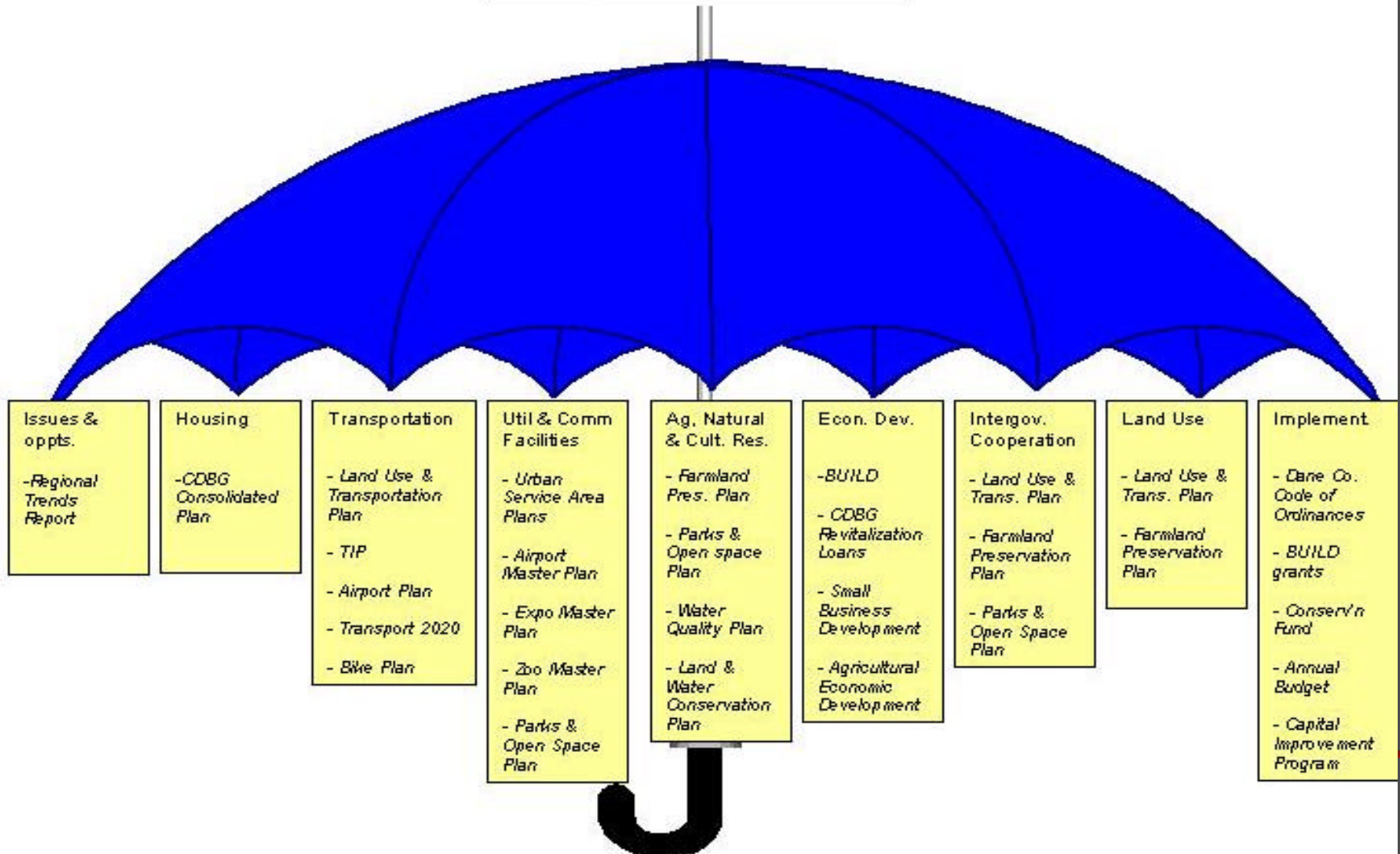
County Plan Strategy

- Build on previous work
 - Framework plan with flexibility to local government
 - Set measurable benchmarks to gauge success
 - Establish task forces for each element
 - Overall direction from Steering Committee
-



County Plan Elements

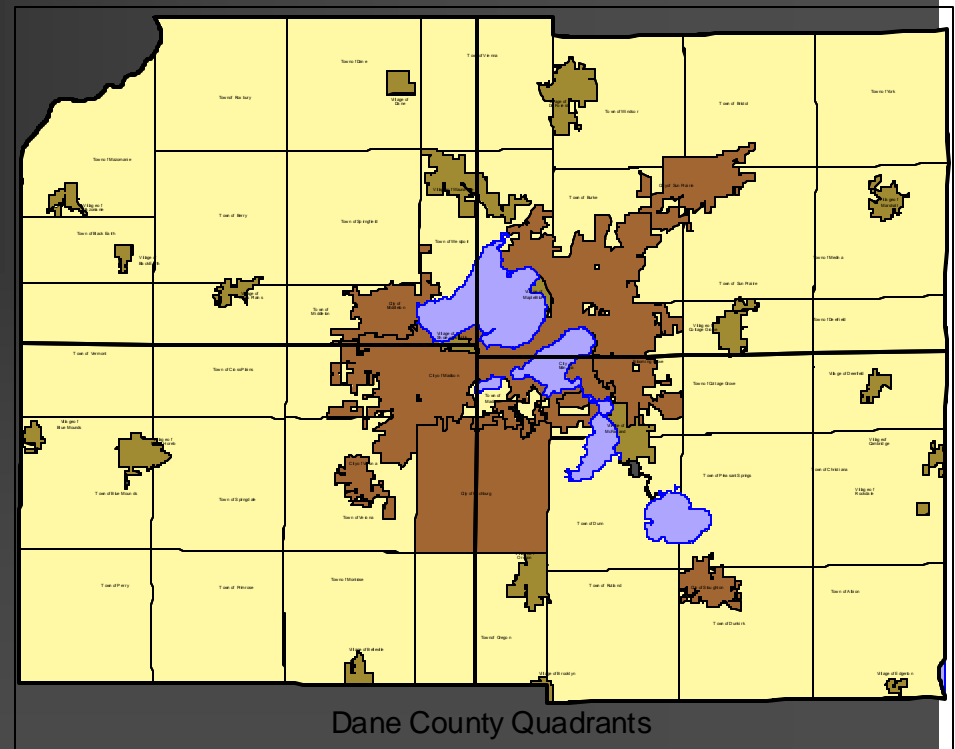
Comprehensive Plan





Public Participation Plan

- Public Awareness
- Public Education
- Public Input
- Public Interaction
- Public Partnership





Community Plan Strategy

- Allow communities to use county plan elements
 - Major focus on land use
 - Provide basic package to meet state requirements
 - Allow for some customization to meet unique needs of each community
-



County & Local Resources

COMPREHENSIVE PLANNING COMMUNITIES: FUNDING VS. PROJECT COST			
	Small community	Medium community	Large community
Cash grant funding available	\$ 10,000	\$ 15,000	\$ 20,000
Local match	\$ 10,000	\$ 15,000	\$ 20,000
Bonus	\$ 2,000	\$ 3,000	\$ 4,000
Total resources available	\$ 22,000	\$ 33,000	\$ 44,000
Basic project cost	\$ 11,600	\$ 11,600	\$ 11,600
Statutory printing costs	\$ 2,700	\$ 2,700	\$ 2,700
\$ value of plan commissioner, supervisor attendance for basic project*	\$ 5,000	\$ 5,000	\$ 5,000
Subtotal	\$ 19,300	\$ 19,300	\$ 19,300
Total local match (\$) needed to cover basic project cost	\$ 7,300	\$ 1,300	\$ -
Total local match (volunteer hours**) needed to cover basic project cost	730	130	-
Volunteer hours per week (over 4 years) for basic project	3.51	0.63	-
Cash available for extra services	\$ -	\$ -	\$ 4,700
Local match (\$) available for extra services	\$ 2,700	\$ 13,700	\$ 20,000
Local match (vol. hours) available for extra services	270	1,370	2,000
Volunteer hours per week (over 4-years) for extra services	1.30	6.59	9.62
* Assumes 500 hours over 4-year period @ \$10/hr			
** Assumes vol. labor valued at \$10/hr.			



County Services to Communities

Basic package:		
	8	monthly public meetings
	1	Half-day community vision forum
	1	Review draft w / 20 copies of color maps (includes the following):
		(a) policies, recommendations and background information related to 9 planning elements to satisfy statutory requirements of state Comprehensive Planning law
		(b) clarification of density policies, including mapping of original farm acreage and procedures for tracking of "splits."
		(c) detailed policies to guide development and preserve farmland
		(d) recommendations to facilitate ongoing intergovernmental cooperation with neighboring towns, cities & villages
		(e) a general evaluation of existing town and county ordinances to identify what changes or new ordinances would be needed to implement plan recommendations, potentially including impact fees
		(f) areas within the town for which detailed neighborhood plans should be prepared
		(g) guidelines for the town to follow when reviewing development proposals and considering amendments to the plan
		(h) recommendations for legal mechanisms to recover the costs of infrastructure and public services associated with new development (i.e., impact fees)
		(i) Maps depicting, at a minimum, existing land use and natural features, planned land use (including "planning districts" and areas for preservation and development), and planned transportation, community facility, park and utility improvements.
	1	Public hearing plan draft w/ 20 copies of color maps
	1	Memo explaining recommended changes after public hearing
	90	Public review copies for adoption under Smart Growth / Farmland Preservation
	1	Presentation at county public hearing
Basic Project Cost:		\$ 19,300



County Services to Communities

Extra Services			
		Alternatives analysis / enhanced public participation (includes the following):	\$ 6,800
		(a) Written public survey to all property owners, tabulation & analysis	
		(b) Alternative scenario development and mapping	
		(c) 4 additional public meetings	
		(d) Full-day public open house on alternatives	
		(e) Analysis, mapping & recommendations on alternatives included in plan text	
		LESA development	\$ 4,000
		Rural design guidelines	\$ 2,000
Full County Package (all extras):			\$ 32,100

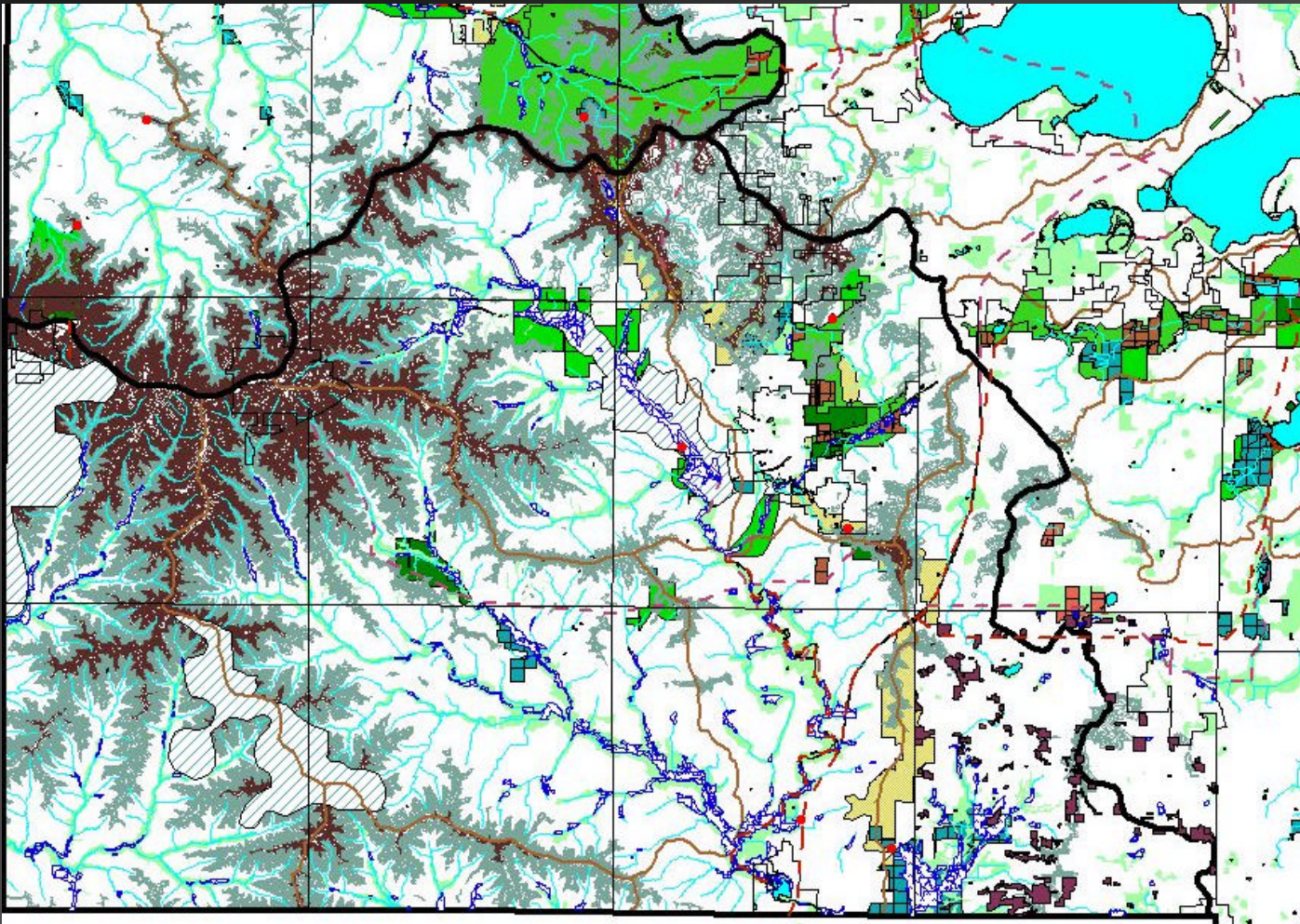


Options for County Assistance

- Modify basic package
- Add extra services within overall budget
- Re-allocate county staff / local resources to meet special needs
- Act as pass-through / provide assistance in securing appropriate consultant



Putting it all together



Upper
Sugar
River
Watershed