



### **Madison/Dane County Clean Sweep**

Location: 2302 Fish Hatchery Rd.  
Madison, WI 53713

*We are available at a convenient  
location and time for you.*

Call (608) 243-0347 for more information and registration information. You may register on-line at [www.danecountycleansweep.com](http://www.danecountycleansweep.com). After completing an inventory of the material you will bring, a scheduled date and drop off time will be provided to you. Appointments are made on Tuesday through Friday mornings. Contact the Clean Sweep Coordinator for details.

### **Clean Sweep Coordinator**

Dave Radisewitz, CHMM 210 Martin  
Luther King, Jr. Blvd., Rm. 507 Madison,  
WI 53703

[www.danecountycleansweep.com](http://www.danecountycleansweep.com)  
(608) 243-0368 (Information Line)  
(608) 243-0347 (Direct Line)  
(608) 267-3105 (Fax)  
[dradisewitz@publichealthmdc.com](mailto:dradisewitz@publichealthmdc.com)

DANE COUNTY/CITY OF MADISON CLEAN SWEEP  
210 MARTIN LUTHER KING JR BLVD RM 507  
MADISON WI 53703

# Small Business Hazardous Waste Collection



MADISON / DANE COUNTY  
**CLEAN  
SWEEP**  
**HOUSEHOLD  
HAZARDOUS WASTE**

Mailing Address:  
Madison/Dane County Clean Sweep  
210 Martin Luther King, Jr. Blvd., Room 507  
Madison, WI 53703  
(608) 243-0347

## Business Convenience

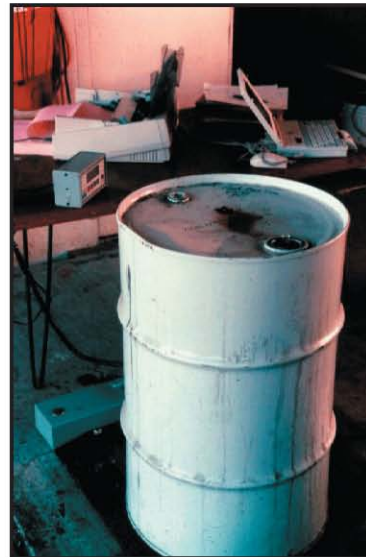
Businesses can dispose of hazardous materials and wastes conveniently and cost effectively through the Dane County Clean Sweep Small Business Hazardous Waste Disposal Program. Businesses classified as VSQGs<sup>1</sup> can dispose of their hazardous materials or wastes simply and conveniently by supplying an inventory of materials for disposal. The business then schedules an appointment to drop off their materials on Tuesday Through Friday mornings.

Common hazardous wastes that are accepted include:<sup>2</sup>

- Automotive Products
- Ballasts
- Corrosives
- Insecticides and Pesticides
- Mercury/Amalgam
- Paints
- Paint-Related Products
- Solvents
- Solvent-Based Products
- Solvent-Based Cleaners
- Degreasers and Strippers
- Adhesives, Glues and Caulks
- Photo/X-ray Developer Chemicals

<sup>1</sup>To meet the legal classification of a Very Small Quantity Generator (VSQG), businesses must generate 220 pounds or less of hazardous waste in a month and store no more than 2,200 pounds of hazardous waste on site at any time. They may have no more than two pounds of acutely hazardous waste on site. All VSQG participants are responsible for the proper packing and transportation of their waste materials to the Clean Sweep site. A VSQG is responsible for their waste from "cradle to grave" under CERCLA.

<sup>2</sup>A complete list of materials and products and the costs associated with disposal will be provided upon request.



## Benefits for Business

### Reduced Costs

State law requires that all Wisconsin businesses producing hazardous waste manage and dispose of their materials and wastes properly. For generators of large quantities of waste this means hiring a chemical contractor to sort, package, and transport the waste to a licensed facility. This option proves very costly for generators of small quantities of waste, especially if they have different waste streams (e.g., solvents and paints). Because the program is an add-on to the Household Hazardous Waste Program, economies of scale provide significant cost savings.

### Reduced Regulations

The Dane County Clean Sweep, through approval of the Wisconsin Department of Natural Resources, has designed a program to assist generators of small quantities of waste to simply, safely and cost effectively dispose of their materials. Ordinarily the procedures required and the paperwork involved is confusing and complicated. Through special rulemaking by the Wisconsin DNR, manifest requirements are waived and Clean Sweep programs have been authorized to accept business waste.

### Proper Treatment

As a VSQG, you may consider your waste to be properly managed by using a Clean Sweep program. Facilities to which this waste is sent are audited regularly. And to minimize liability, these materials are disposed through a hierarchy of disposal: **Reuse, Recycle, Treatment, or Incineration**. By using a hierarchy of disposal, wastes are disposed of in the most cost efficient and environmentally conscious manner.